

TISC

TERTIARY
INSTITUTIONS
SERVICE
CENTRE

WESTERN AUSTRALIA

ANNUAL REPORT

JULY 2016 – JUNE 2017



Tertiary Institutions Service Centre Inc

Address for all correspondence:

**Level 1, 100 Royal Street
EAST PERTH WA 6004**

Office Location:

**First Floor
100 Royal Street
EAST PERTH WA 6004**

Telephone: (08) 9318 8000

Facsimile: (08) 9225 7050

www.tisc.edu.au

Thirty-seventh Annual Report
Prepared and printed by TISC staff
October 2016
TISC Inc WA
TISC is a registered trade mark

FOREWORD

It is with much pleasure that I present the Thirty-Eighth Annual Report of the Tertiary Institutions Service Centre (TISC).

This report contains information about the various functions of the Centre and its operational structure, together with financial reports and statistical information on the 2016/2017 applications process. The detailed statistical tables relating to 2016 WA Year 12 results and 2017 applications, offer and enrolment information are available at www.tisc.edu.au.

TISC received a total of 18,631 undergraduate university applications, very similar to the volume received in 2015/2016. Fewer offers were made this year, however the acceptance rate for those offers increased slightly. In the 2015/2016 STAT year, the number of STAT candidates also remained stable, compared with the previous year. The overall number of WAUFP students enrolled in 2016 declined slightly, with 154 enrolled across all three programs, compared to 164 in total the previous year. The WAUFP program was examined for the first time at an overseas centre (Nanjing, China).

2016 saw new WACE courses examined for the first time, which necessitated modifications to the TISC database and scaling processes to accommodate the new course results. WA was also one of the first jurisdictions to adopt an improved, one-parameter calculation of the ATAR in 2016.

At very short notice, TISC opened applications a month earlier than usual, to assist universities in a trial of early offers to engineering students.

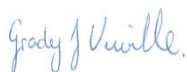
A range of publications and documents were produced by TISC for WA Year 12 students. The *2017 TISC Guide* was again distributed free to current WA school leavers, together with a personalised letter instructing them how to apply through TISC. TISC also provided over 70 presentations at metropolitan and country schools on the ATAR, requirements for university entry, preference and offer systems. The Universities Admission Advice Letter (UAAL), which includes scaled scores, ATARs (if applicable) and individualised university eligibility information, was available online to all WA students with at least one scaled score.

TISC undertook significant IT projects and upgrades again this year to ensure continued reliability and stability of systems and to enhance services provided to member institutions and applicants. Apart from significant work to accommodate the new WACE subjects and results, TISC programming continued to support the automatic assessment of applicants' eligibility for alternative entry/bonus point schemes for member institutions, some of which changed or were new this year. After a successful project to upgrade infrastructure supporting the TISOnline application suite, an equally extensive piece of work was undertaken to upgrade our Oracle database hardware, storage and network infrastructure into a virtualised environment, incorporating the latest software technology.

A complete redesign of the TISC website was successfully completed, and has received positive feedback from stakeholders. New functionality has been added to the application environment, to help students check how their expected results compare with those required for entry to particular courses. A facility to allow universities to electronically transfer course description information to TISC was implemented. Modifications to the TISOnline Course Search database allowed Associate Members to list individual courses for the first time, and applicants to search courses based on the ATAR required for entry.

An external Review of TISC recommended changes to its governance structure. TISC has responded positively to address identified priorities, and continues work with member institutions to implement the recommended governance changes.

On behalf of the TISC Management Committee, we express appreciation for the high levels of commitment, efficiency and diligence shown by the Centre's staff and especially the CEO, Mr Wayne Betts. Finally we also wish to thank members of the Management Committee and the various committees of TISC for their co-operation and support.



Prof. Grady Venville
Chair, TISC Management Committee

CONTENTS

	Page
Foreword	i
The Tertiary Institutions Service Centre Inc	
Objects of the Tertiary Institutions Service Centre Inc	1
Major Activities of the Centre	1
Member Institutions	1
Associate Member Institutions	1
Committees	
Management Committee	2
Applications Committee	2
Scaling Policy Committee	2
Joint SCSA/TISC Scaling Implementation Committee	2
Joint Working Group on Tertiary Admission	2
Centre Administration	
Staff	3
Staff Development/Activities	4
External Representation	4
Accommodation	4
Funding	4
Initiatives and Developments	
General Developments	5
IT Developments	6
IT Systems Upgrade	7
Customer Service	9
School Curriculum and Standards Authority Liaison	10
State Training Provider (TAFE) Liaison	10
Interstate Liaison	11
Australian Law Schools Entrance Test	11
National Data Collection of Applications and Offers	11
Australasian Conference of Tertiary Admissions Centres (ACTAC)	11
Applications Statistics - 2016 Intake	
Applications	12
Preferences, Offers and Enrolments	12
Changes of Preference	14
WA Year 12 Population	15
Applicants with Interstate Year 12	15
Other Applicants	16
Flow Pattern of Non-WA Year 12 Applications	17
Applications and Offers Statistics 1977-2017 (Graph)	18
Website Statistics	
2016/2017 Summary	19
Monthly Report	19
University Applications	19
WA Year 12 Results and ATARs	20
University Offers	20
UAAL Hardcopy Orders	20
TISCOOnline Static Content Search	20
Email Subscription Service Updates	20
Web Referrals	21

	Page
Special Tertiary Admissions Test (STAT)	
STAT Enrolments	22
STAT Scores	22
Testing Sessions in the Metropolitan Area	23
Scheduled Testing Sessions in Regional Areas	23
Scheduled Testing Sessions in Prisons	24
Special Use of STAT	24
STAT National Database	25
Changes That Occurred in 2016	25
Western Australian Universities' Foundation Program (WAUFP)	
Provider Colleges and Student Numbers	26
Student Subject Enrolments	27
Nationality Group	27
Setters, Checkers and Markers	28
Special Tertiary Admissions Test (STAT)	28
Final Examinations	28
Evaluation of the Examination Papers	29
Subject Moderation	29
Scaling	29
Notification of Results	30
Relationship between ELACS Results and the CPS	30
Certificates of Achievement and Letters of Congratulations	31
Future Changes	31
School Visits	32
Schedule of Dates	33
TISC Publications	34
Schedule of Fees and Charges	35
List of Appendices	36
A - Customer Service Statistics	37
B - Western Australian Universities' Foundation Program Statistics	41

Note: Detailed statistics on applications, offer and enrolments by course within a university for Undergraduate courses are on www.tisc.edu.au (see Publications, Reports and Statistics).

TERTIARY INSTITUTIONS SERVICE CENTRE (INC)

The organisation known as the Tertiary Institutions Service Centre (TISC) was established on 10 December 1975 by an agreement of the participating tertiary institutions. A new constitution was subsequently drawn up in June 1984 to establish the Tertiary Institutions Service Centre (Incorporated) (TISC Inc) under the Associations Incorporations Act 1895-1982. The constitution was revised in April 1995, and again in June 2001.

Under the terms of the TISC Constitution a Management Committee consisting of representatives from the participating universities was appointed to act on behalf of the universities and to be responsible for the activities of the Centre.

OBJECTS OF THE TERTIARY INSTITUTIONS SERVICE CENTRE INC

The objects of the Centre are as follows:

- (i) to process the applications for admissions to the Institutions;
- (ii) to enhance and facilitate interest and participation in higher education in the state of Western Australia;
- (iii) to do all such acts, matters and things and carry out such other functions as the Committee deems desirable to further the objects of the Centre and the common interests of the Institutions.

MAJOR ACTIVITIES OF THE CENTRE

- (i) Processing of all applications for admission to the participating member universities for undergraduate programs of study (including those with graduate entry) and other courses as agreed from time to time;
- (ii) Conduct of specially designed tests such as the Special Tertiary Admissions Test (STAT);
- (iii) Administration of the Western Australian Universities Foundation Program (WAUFP);
- (iv) Publication of information in relation to admission in Western Australian public universities.

MEMBER INSTITUTIONS

Curtin University
Edith Cowan University
Murdoch University
The University of Western Australia

ASSOCIATE MEMBER INSTITUTIONS

CQUniversity Australia
North Metropolitan TAFE
Tabor College of Higher Education

COMMITTEES

MANAGEMENT COMMITTEE

The Management Committee is responsible for overseeing the operations of the Centre. This committee comprises two representatives from each member university. The Secretary to the committee is a representative from the Tertiary Institutions Service Centre.

The Constitution and Rules of the Centre provide for the Chair of this committee to be rotated between the member universities and that the Chairperson should not be appointed for more than two years.

Meeting Dates: 14 October 2016, 2 December 2016, *17 March 2017 and 2 June 2017

****17 MARCH 2017 BY CIRCULATION**

APPLICATIONS COMMITTEE

The Applications Committee is a forum for university Admissions Officers and TISC staff to discuss issues concerning the applications process. This Committee reports to the Management Committee.

Meeting Date: 5 August 2016

SCALING POLICY COMMITTEE

The Joint School Curriculum and Standards Authority (SCSA)/TISC Scaling Policy Committee reviews and determines scaling policy and procedures for WACE courses. The committee reports to the SCSA and TISC Management Committee.

Meeting Date: 29 September 2016

JOINT SCSA /TISC SCALING IMPLEMENTATION COMMITTEE

The Joint School Curriculum and Standards Authority (SCSA)/TISC Scaling Implementation Committee, which is attended by TISC, SCSA and university representatives, is held annually. At this session, the Scaling Report was presented along with proposed scaling points for small candidature language subjects. The Committee confirms the scaling outcomes which are circulated to SCSA and the TISC Management Committee.

Meeting Date: 13 December 2016

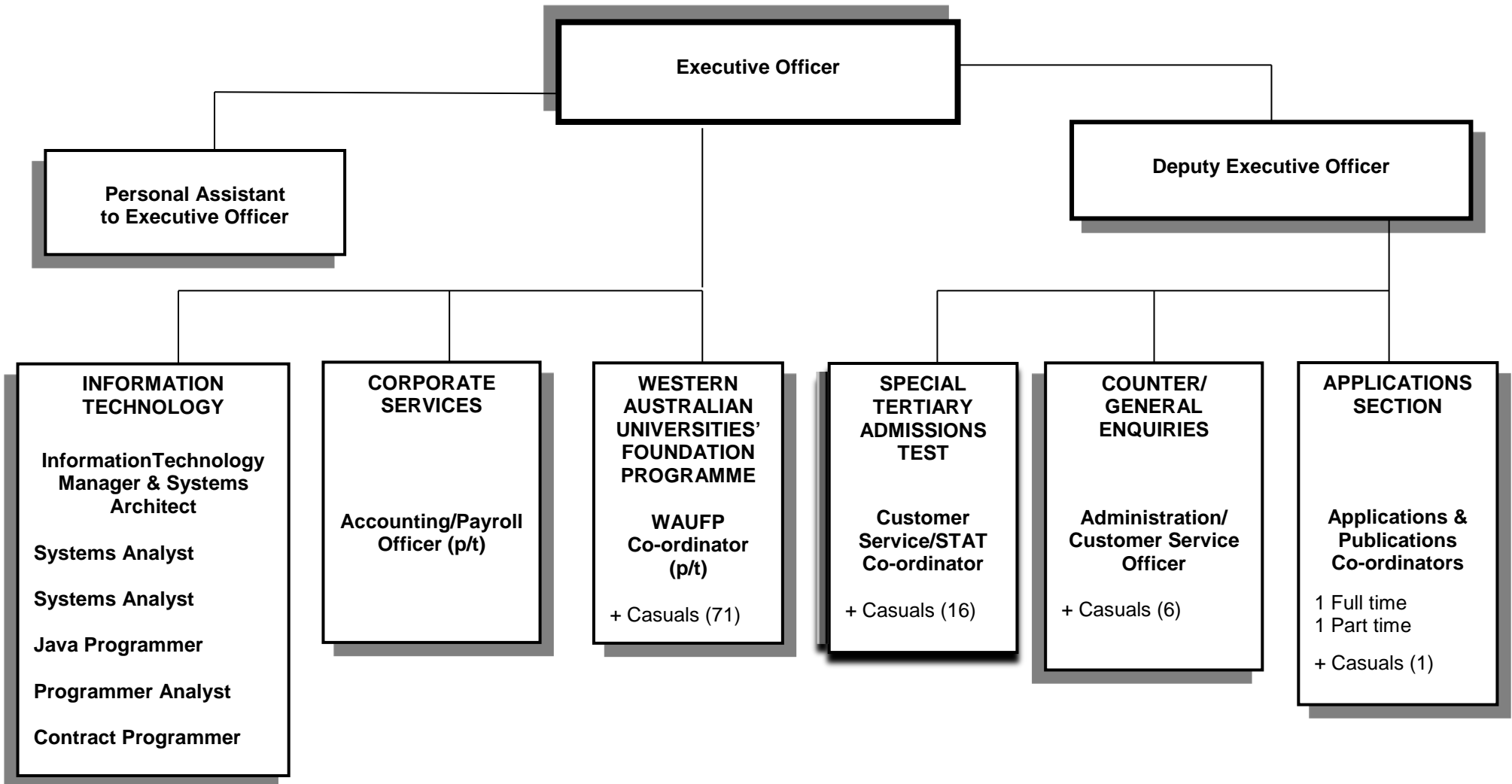
JOINT WORKING GROUP ON TERTIARY ADMISSION

The Joint Working Group on Tertiary Admission is a forum for the universities and TISC to discuss common issues that relate to TISC and/or admission policy issues. This committee reports to the Management Committee. The position of Chair is rotated between the universities at each meeting.

No meetings were held in this reporting period.

CENTRE ADMINISTRATION

TISC STAFFING STRUCTURE



STAFF DEVELOPMENT/ACTIVITIES

All members of the IT section, ie Mr Terry Bhatti, Mr Leo He, Mr Mauro Vennitti, Mr Greg Zablocki and Mr Rodney Paul, are members of the Oracle Users Group.

All administrative staff attended a planning day in Perth in March 2017.

EXTERNAL REPRESENTATION

TISC is a member of the Australasian Conference of Tertiary Admission Centres (ACTAC). Deputy Executive Officer, Ms A Williams is a member of the School Curriculum and Standards Authority Sickness and Misadventure Committee. Ms Williams is also a member of the ACTAC Year 12 Results Equivalence Group (REG).

ACCOMMODATION

TISC is located at Level 1, 100 Royal Street, East Perth and occupies two floors of commercial building office space totalling 540sqm.

Limited parking is available for staff at the basement level of the building. TISC is however located close to public transport and parking.

The five (5) year lease is operable until April 2019.

FUNDING

TISC is a non-profit organisation that is funded by fees charged for its services. The universities pay a contribution fee for the services they receive from TISC.

A net contribution was charged to the member universities for the period 1 July 2016 to 30 June 2017, which included a set fee for each direct entry applicant.

Each university pays a fixed component, plus a pro-rata component based on the number of student enrolments that were, or should have been, processed through the TISC joint system.

INITIATIVES & DEVELOPMENTS

GENERAL DEVELOPMENTS

Overall application numbers this year were very similar to last year's. TISC processed 18,361 applications this year, compared to 18,336 in 2015/2016. Both current WA Year 12 application numbers and applications from people with other educational backgrounds remained stable.

TISC opened applications a month earlier than usual – at short notice – to support universities conducting a trial of making early offers to selected applicants in engineering courses.

A significant reworking of the TISC website was completed, to provide a more contemporary, streamlined experience for applicants. The redesign and modified navigation have prompted positive feedback from users.

A formal review of TISC was conducted by Emeritus Professor William Loudon, with a number of recommendations being endorsed by senior leadership of WA universities. A list of priorities for 2017 was identified, and TISC has been successful in addressing those priorities in the first part of 2017. Further work will continue to enhance the governance and operations of TISC in the future.

An investigation by the Australian Competition and Consumer Commission (ACCC) of a complaint by The Australian National University - concluded with no action being taken.

The first cohort of students successfully completed the Western Australian Universities' Foundation Program (WAUFP) at the Experimental School attached to Nanjing Normal University, under an agreement with the WA Education Group. This involved TISC arranging offshore examination supervision and secure transmission of papers and exam scripts between Perth and Nanjing.

North Metropolitan TAFE, CQUniversity and Tabor College of Higher Education renewed their Associate Membership of TISC.

Agreement was reached with the Schol Curriculum and Standards Authority to release Year 12 results and Australian Tertiary Admission Ranks for WA students before Christmas, from 2017 onwards.

TISC, alongside other state-based Tertiary Admissions Centres, continued to be involved in discussions with the Australian government's Higher Education Standards Panel's consultation on Transparency in Tertiary Admissions and has actively contributed to work with the Admissions Transparency Implementation Working Group to implement the recommendations of the Panel.

IT DEVELOPMENTS

This year again universities pathway schemes underwent substantial development work to accommodate changes to WACE course structure and university specific requirements including an introduction of a new scheme for ECU.

The WACE course structure changes had wide ranging implications on a number of core programs which included Past Results Collection, Year 12 Course of Study Scaling and Aggregation, several pathway schemes, Universities Admission Advice Letter, QTISC - application processing system and a range of essential reports.

Curtin Portfolio, which uses C Grade Average of Year 12 results over the 5 year period, was most affected by the WACE changes due to a complex set of combinations of courses and unit levels used in calculation of CGA.

Curtin StepUp schemes were also updated for changes to low-socioeconomic criteria. The WA StepUp and StepUp Bonus schemes now both use WA school attended and indigenous descent status, while the Interstate StepUp had low-socioeconomics checks removed.

ECU runs several pathway schemes all of which were modified to incorporate changes for new ECU minimum entry rank of 70 and new English literacy requirements. ECU also introduced a new pathway scheme, Access, which is open to students from eligible WA schools from areas with educational disadvantage. The Scheme grants up to 10 selection rank points to eligible students with an ATAR from 60 to 69.95 to a maximum rank of 70, while eligible students with an ATAR of 70 and above receive 5 selection rank points to a maximum rank of 90.

Apart from WACE and pathways related changes, a number of other major tasks were also completed some of which are listed below:

Accommodated early start to the applications and early Engineering offers which were trialed for the first time in 2016/2017 application cycle. The whole trial was successfully accomplished despite the amount of changes it entailed to processes and programs on a short notice.

Amended Average Marks Scaling (AMS) procedures to accommodate a single run for calculating scaled scores from standardised combined marks of WACE courses. Also implemented adaption of one-parameter statistical functions as models of participation function for generating TEA to ATAR conversion table.

Developed a set of programs to simplify integrity checks of aggregation of WACE scaled courses marks, ATAR calculation and subsequent applicant eligibilities for various pathway schemes and university courses. This involved implementing automated comparison of programing outputs at different stages of the process as well as a comprehensive range of test cases producing calculated outputs. This has helped in significantly reducing the time and effort needed to verify accuracy of data which in the past was a relatively laborious process.

STAT aggregation and subsequent applications eligibility updates processes which takes place after January STAT each year also undergoes rigorous integrity checks. In the past these checks were carried out manually from hardcopies of data extracts. This year IT implemented automated data collation programs and pre/post comparison views to identify changes for speedy verification.

Automated transfer of STAT results from ACER and an interstate TAC for direct import into the National STAT Database.

Modified WAUFP programs and scaling process to accommodate an overseas provider college at Nanjing China.

Accommodated several ad-hoc data requests from non-member entities including WA schools administrations and RAINE Study Project Team which involved data identification and provisioning for a select cohort dating back to 2006.

Made a number of enhancements to application processing system (QTISC) to further facilitate application assessment process by providing easy access to secondary literacy status, application communication preferences and STAT booking status.

TISCOOnline underwent a number of enhancements to public and backend sub-systems, some of which are listed here:

- Redeveloped public website's interface with newly designed style sheets for a more modern look and enhanced user experience.
- Implemented a course contents transfer facility which enables universities to download or uploaded course into the TISCOOnline course system. This significantly reduces yearly task of updating courses which involves maintaining same set of courses separately in university and TISC systems.
- Implemented course guaranteed ATAR utility which allows filtering courses by minimum ATAR required for entry into the course.
- Implemented ATAR check facility which allows Year 12 students to enter their expected rank to self-assess their chosen preferences against the minimum ATAR requirements for the courses.
- Implemented associate member institutes feature which allows their courses to be published on TISCOOnline while disallowing those courses from inclusion into the TISC application preferences.
- Implemented online receipting and email notification for the manual payments for online applications and UAAL services.
- Enhanced course preferences' tracking beacon which allows member universities to measure the success of their marketing campaigns to target inclusion of their courses into application preferences. The feature now provides a range of individualised options to assist in detailed analysis of the user journey and selection of preferences.

TISC IT continues in its efforts to automate and streamline legacy IT processes ranging from data exports/imports from various sources and implementing process monitoring to achieve consistent outcomes.

IT Systems Upgrades

Undertook a major strategic project to upgrade Oracle database and application systems environment to replace aging hardware and outdated software components both at the primary and disaster recovery sites. The old SPARC servers and Storage were replaced with cloud enabled Oracle Storage and Intel based Oracle Servers running Oracle Virtualisation Software (OVM). This allowed TISC to migrate all Oracle services to fully virtualised environment with huge gain in performance, availability and ease of administration. The new infrastructure also further enables TISC to consolidate various storage appliances into single high capacity storage.

Apart from the hardware upgrades, the Oracle database, application servers and software frameworks were also upgraded to the latest offerings. The extended software compatibility matrix has enabled TISC to start migrating legacy applications to advanced alternative solutions.

Updated Oracle database backup and recovery processes to minimise downtime in an event primary server becomes unavailable. The new automated process keeps standby databases at primary and DR sites in sync with the source and incorporates inbuilt checks to ensure reliability and readiness.

Updated offsite LTO data archive procedures in line with recommendations from an external review to ensure integrity of the data and recovery procedures.

Enhanced protected access portal to grant access to non-member organisations to promote secure mechanism for transferring information. Also updated servers' security mechanism to achieve an A grade security for vital online services.

Migrated TISOnline database and application software at the disaster recovery site to a virtualised environment which further reduced hardware footprint at the DR site. Also updated TISOnline load-balancing mechanism at primary site to enhance compatibility with the new JBoss application platform.

Honed network connectivity between primary and DR sites by attuning data transfer processes, which allowed decommissioning WAN compression devices to avoid costly upgrades.

Decommissioned legacy scaling & accounts hardware and migrated applications to virtualised resources to protect against a single point of failure.

New Projects Commencement

Commenced a project to redevelop legacy Oracle Forms and Reports based applications into web-based applications using current Oracle technologies. The project has been broken into sub-systems which will be commissioned into production in stages over the course of the larger project.

Commenced a project to accommodate participating member organisations into TISC systems and processes for provisioning full cycle admission applications process via TISC. This requires changes to TISOnline, back-end application processing system, database, set of core programs and reports.

Commenced a project to introduce electronic documents feature to admission applications systems. This will enable applicants to attach documents to their applications via TISOnline, which will then be accessible by TISC and universities via the backend application processing system. Once fully implemented, it will replace current procedure of hardcopies maintenance.

Initiated a task to incorporate an IT Management software into TISC ITS for an integrated solution to manage IT services.

CUSTOMER SERVICE

During the 2016/2017 processing period, Customer Service experienced an increased level of activity with telephone and counter enquiries compared to the previous year.

This year, the total number of counter enquiries from customers was 3377; telephone enquiries were 9332, and emails 4454. This represented an increase in counter, email and telephone enquiries.

At the request of the universities applications opened on 4 July 2016. This was 5 weeks earlier than the previous year.

Staffing

Two new Customer Service Officers (CSO) joined our four experienced officers in August 2016 to make up the team of 6 casual officers, with 2 casual staff members being rostered each day. During September, November, and January the CSOs were rostered more frequently than one day per week due to the increasing work load during these months.

As applications opened earlier this year there were no training sessions held for all CSOs in August. Training was done on individual basis with the two new CSOs. As part of the training our CSOs are given comprehensive information to answer enquiries from our customers.

Our CSOs are knowledgeable, responsive, and have delivered excellent service to our customers over the past year.

Emails

We received 4454 email enquiries this year compared to 4262 in the previous year. This is an increase of 4.5%. The busiest month was September, with 1034 emails (23.2% of all emails received during July to February).

The acceptance of emailed STAT Booking Forms and Requests for Record of Results again proved popular. We received 547 (475) Record of Results requests and 897 (818) STAT Booking Forms. We also received 128 (186) sets of university application supporting documentation, although the email accounts set up to receive STAT Booking Forms and Results Requests were not intended to be used for this purpose.

Telephone

Customer Service answered 9332 (9304) telephone enquiries from July 2016 to February 2017. This is a slight increase of 0.3%. The busiest month was January 2017 with 2347 (2424) enquiries (25.2% of all calls answered during the busy period) followed by September 2016 with 1548 enquiries (16.6% of enquiries answered).

Enquiries about university applications increased by 13.4% (from 3442 to 3974), enquiries about registration/login decreased 13.3% (from 400 to 347). This may be attributed to more applicants using the automated password reset facility on the TISC website.

Counter

Counter activity increased from 2971 customers the previous year to 3377 customers this year. This is an increase of 12%. The majority of our customers were requesting a record of their past results, handing in supporting documentation for their university applications and STAT bookings in December/January.

SCHOOL CURRICULUM AND STANDARDS AUTHORITY LIAISON

Year 12 results and ATARs for 2016 were released on schedule, with TISC and SCSA staff again working to tight deadlines. The revisions to systems, scaling and reporting processes required by the examination of new WACE courses for the first time in 2016 were implemented successfully.

TISC provided information on median ATARs to SCSA for inclusion in Year 12 Student Achievement Data.

Work has continued to implement bonuses for Mathematics Methods and Mathematics Specialist for the 2017 ATAR calculation.

Further cooperation has resulted in a commitment to release Year 12 results and ATARs to students before Christmas from 2017.

TISC and SCSA have worked closely on all issues of common interest, with strong co-operation between the two bodies to achieve the best results for WA students.

STATE TRAINING PROVIDER (TAFE) LIAISON

The table below shows the number and percentage of applicants for whom TISC collected current WA State Training Provider (TAFE) results and completion information.

	<i>2017</i>	<i>2016</i>	<i>2015</i>
<i>Applicants</i>	310	366	365
<i>Requests</i>	324	378	383
<i>% of all Other applicants</i>	5.3%	6.4%	6.1%
<i>% of all applicants</i>	1.7%	2.0%	2.6%

The number of WA State Training Provider collections was lower than in 2016.

INTERSTATE LIAISON

Certification of Documents

TISC continues to certify documents for applicants to submit to interstate admission centres. A small fee is charged. Other interstate centres reciprocate this service for TISC applicants.

AUSTRALIAN LAW SCHOOLS ENTRANCE TEST

During October, TISC continues to hold one Australian Law Schools Entrance Test (ALSET) session on behalf of VTAC, for students who apply for admission to the law course at Deakin University. This session is usually run concurrently with a STAT session at Canning College. TISC charges an additional fee to each applicant to cover the cost of running the session.

NATIONAL DATA COLLECTION OF APPLICATIONS AND OFFERS

TISC again participated in the federal government's national data collection of applications and offers for undergraduate university places for which applications are made through Tertiary Admission Centres (TACs). Data was transferred to the federal Department of Education and Training on five occasions from October 2016 to May 2017, on dates negotiated between ACTAC and the Department.

AUSTRALASIAN CONFERENCE OF TERTIARY ADMISSION CENTRES (ACTAC)

Officers of each of the state's Tertiary Admission Centres meet twice a year to discuss common issues such as web development, customer services, etc and to confirm joint arrangements such as the Special Tertiary Admissions Test and Automated Results Transfer System (ARTS). The Executive Officer and Deputy Executive Officer attended meetings in October 2016 and April 2017.

APPLICATION STATISTICS - 2017 INTAKE

APPLICATIONS

For 2017 admission, a total of 18,361 applications were processed (12,420 from WA Year 12 students). There was an overall increase of 0.1% in the number of applicants compared with last year (as against an increase of 30.7% in 2015/2016 and a decrease of 24.7% in 2014/2015). Numbers of WA Year 12 applicants decreased by 0.7% (as compared with an increase of 55.7% in 2015/2016 and a decrease of 31.6% in 2014/2015). Numbers of Other applicants increased by 2.1% compared with last year, following decreases of 3.3% in 2015/2016 and 12.6% in 2014/2015.

Table A: Main Round and Total Applications, 2015-2017

	2017		2016		2015	
	Main Round	Total	Main Round	Total	Main Round	Total
WA Year 12*	12,420	12,498	12,512	12,592	8,057	8,088
Other (incl current IS Yr 12)	5,566	5,863 (578)	5,313	5,744 (664)	5,504	5,940 (678)
TOTAL	17,986	18,361	17,825	18,336	13,561	14,028
% of all WA Yr 12 students who applied to university		50.1%		50.7%		48.2%

*Note 'half-year cohort' effect in 2015.

PREFERENCES, OFFERS AND ENROLMENTS

The joint admissions procedure offers applicants the choice of submitting up to six preferences. Table B shows that over 30% of all applicants made use of all six preferences.

Table B: Applications by Preference, 2014-2017**

Applications (% of all apps)	Preference					
	First	Second	Third	Fourth	Fifth	Sixth
2017	18,361 (100%)	15,474 (84.2%)	13,633 (74.2%)	11,457 (62.4%)	9,099 (49.5%)	6,686 (36.4%)
2016	18,336 (100%)	15,433 (84.2%)	13,367 (72.9%)	11,175 (60.9%)	8,721 (47.6%)	6,407 (34.9%)
2015	14,028 (100%)	11,270 (80.3%)	9,555 (68.1%)	7,823 (55.8%)	5,976 (42.6%)	4,387 (31.3%)
2014	18,621 (100%)	15,612 (83.8%)	13,465 (72.3%)	11,101 (59.6%)	8,654 (46.5%)	6,337 (34.0%)

Table C below shows a 5.4% decrease in total enrolments (this figure includes deferrals) from 2016 to 2017, however, as fewer offers were made in 2017, the acceptance rate in 2017 is better than in the previous year. 2015 figures for all universities are non-standard, due to the 'half-cohort' of Year 12 students in 2014.

Table C: Preferences, Offers & Enrolments (Including Deferrals) by Institution, 2015-2017**

	Year	Total Preferences	First Preferences	Total Offers	Enrolments*	
					Total	% of offers
Curtin	2017	34,277	9,285	7,268	6,293	86.6
	2016	32,532	8,345	7,590	6,482	85.4
	2015	23,324	6,455	5,788	4,920	85.0
ECU	2017	11,429	2,044	2,044	1,687	82.5
	2016	12,483	2,169	2,285	1,770	77.5
	2015	9,084	1,535	1,706	1,314	77.0
Murdoch	2017	14,057	2,831	2,472	2,103	85.1
	2016	14,877	3,155	2,808	2,225	79.2
	2015	9,635	2,103	1,765	1,515	85.8
UWA	2017	14,938	4,235	3,606	3,075	85.3
	2016	13,546	4,666	3,789	3,235	85.4
	2015	10,996	3,935	2,997	2,580	86.1
TOTAL	2017	77,239	18,352	15,390	13,158	85.5
	2016	73,438	18,335	16,472	13,909	84.4
	2015	53,039	14,028	12,256	10,329	84.3

*Includes deferrals.

**Please refer to 'Final application, offer and enrolment data for 2017 admissions' on www.tisc.edu.au under 'Application and Offer Statistics – 2016/2017' for full institutional details.

Table D below shows that the percentage of enrolments from first preference offers in 2017 was higher for Curtin and ECU, around the same for Murdoch, and slightly lower for UWA.

Table D: First Preference Enrolments* as % of First Preference Offers, 2015-2017

	2017	2016	2015
Curtin	89.6	88.7	88.1
ECU	87.2	83.4	83.0
Murdoch	89.6	89.3	90.2
UWA	86.7	87.8	87.8

*Includes deferrals

The universities made 15,390 offers over the two rounds, with 75.6% of all applicants who were made an offer receiving their first preference. Offers were made to 11,349 WA Year 12 students, or 90.8% of all WA Year 12 applicants. The total number of applicants increased by 0.1% compared with that for last year. The number of offers made decreased by 6.5% compared with last year. The number of offers to interstate Year 12 applicants was 345 compared with 279 last year, representing an increase of 23.7%, following a decrease of 4.8% the previous year.

Table E: Main Round, New Second Round and Total Offers, 2016-2017

This table compares offers made over the past three admissions periods.

(Note: The table below is as at 1 February 2017 and does not include all post-second round manual offers)

N° Receiving an Offer	2017			2016			2015		
	Main Round	New 2 nd Round	Total*	Main Round	New 2 nd Round	Total*	Main Round	New 2 nd Round	Total*
WA Year 12**	11,036	1,083	11,349	11,610	966	11,815	7,305	569	7,473
Other (Incl. Current I/S Year 12)	3,647	491	4,041 (345)	4,130	620	4,650 (279)	4,255	634	4,780 (293)
TOTAL	14,683	1,574	15,390	15,740	1,586	16,465	11,560	1,203	12,253
% Receiving an Offer	Main Round	New 2 nd Round	Total*	Main Round	New 2 nd Round	Total*	Main Round	New 2 nd Round	Total*
% of All Applicants	81.6%		83.8%	88.3%		89.8%	85.3%		87.3%
% of WA Year 12 Applicants	88.9%		90.8%	92.8%		93.8%	90.7%		92.4%
% of 1 st Preference Offers	74.7%		75.6%	76.3%		78.0%	77.0%		77.8%

*Note: double counting of main round offer and replacement new second round offer to the same person has been removed from this total.

**Note 'half-year cohort' effect in 2015.

CHANGES OF PREFERENCE

Applicants were required to change preferences online, with TISC staff making manual changes to correct errors and for other reasons. In total, 16,354 changes of preferences were made (an increase of 19.4% compared with the previous year, after an increase of 49.5% the previous year).

The table below shows the number of preference changes.

	2017		2016	2015	% Change		
	to 27/12*	Total	Total	Total**	2016-2017	2015-2016	2014-2015
Online	8,565	15,586	13,237	8,803	+17.7%	+50.4%	-32.9%
Other TISC	510	768	456	355	+68.4%	+28.5%	-31.5%
TOTAL	9,075	16,354	13,693	9,158	+19.4%	+49.5%	-35.9%

*Note: Release of WACE results

**Note 'half-year cohort' effect.

The 'TISC' category covers manual changes by TISC staff and reflects not only correction of re-enrolment and category errors, but also any deletion of preferences due to the withdrawal of courses during the admission period. It also reflects rectification by TISC of outcomes files discrepancies between main and second round offers, after contact with applicants. There was an increase of 68.4% in manual changes overall. The increase in course amendments from the universities compared with the previous year (244 preference changes compared with 77 preference changes in 2016 and 42 preference changes in 2015) also contributed to the increase. There was a substantial jump in the number of error corrections, possibly due to applicants applying for the wrong course code where there were an increased number of categories (eg mind between the offer rounds. These changes of mind increased by 14.3% from the 2016 admission year.

WA YEAR 12 POPULATION

The percentage of all Year 12 students (including mature age) applying for university for admission in 2017 decreased slightly. The percentage offered a place in 2017 who accepted their offer, either by enrolling or deferring, increased.

Table G: WA Year 12 Population (Including Mature Age and Overseas), 2015-2017 Admissions

	Total	Applications (% of Year 12)		Offers (% of Applications)		Enrolments* (% of Offers)	
2017	24,950	12,501	(50.1)	11,363	(90.9)	9,847	(86.7)
2016	24,819	12,592	(50.7)	11,817	(93.8)	9,995	(84.6)
2015	16,837	8,088	(48.0)	7,473	(92.4)	6,400	(85.6)

*Includes deferrals

APPLICANTS WITH INTERSTATE YEAR 12

Table H shows the number of applications and offers and subsequent enrolments, deferrals and lapses for interstate applicants. The number of offers to current year Interstate Year 12s was 345 compared with 279 last year, representing an increase of 23.6%. Enrolments as a percentage of offers for all applicants with interstate school results remained below 50%.

Table H: 2017 Applicants with Interstate School Leaving Qualifications (All Years & Current Year 12)

		TOTAL	ACT	NSW	NT	QLD	SA	TAS	VIC
<i>Applications</i>	<i>All Yrs</i>	1,420	55	462	77	220	182	53	371
	<i>Current Yr 12</i>	887	39	279	61	128	125	21	234
<i>Offers</i>	<i>All Yrs</i>	630	24	155	58	125	78	37	153
	<i>Current Yr 12</i>	345	15	78	44	68	47	16	77
<i>Offers as % of applications</i>	<i>All Yrs</i>	44.4	43.6	33.5	75.3	56.8	42.9	69.8	41.2
	<i>Current Yr 12</i>	38.9	38.5	28	72.1	53.1	37.6	76.2	32.9
<i>Enrolments</i>	<i>All Yrs</i>	281	9	76	26	64	29	16	61
	<i>Current Yr 12</i>	78	3	22	16	18	6	2	11
<i>Enrolments as % of offers</i>	<i>All Yrs</i>	44.6	37.5	49	44.8	51.2	37.2	43.2	39.9
	<i>Current Yr 12</i>	22.6	20.0	28.2	36.4	26.5	12.8	12.5	14.3
<i>Deferrals</i>	<i>All Yrs</i>	41	2	5	9	9	4	5	7
	<i>Current Yr 12</i>	28	1	3	7	8	3	3	3
<i>Deferrals as % of offers</i>	<i>All Yrs</i>	6.5	8.3	3.2	15.5	7.2	5.1	13.5	4.6
	<i>Current Yr 12</i>	8.1	6.7	3.8	15.9	11.8	6.4	18.8	3.9
<i>Lapses</i>	<i>All Yrs</i>	308	13	74	23	52	45	16	85
	<i>Current Yr 12</i>	239	11	53	21	42	38	11	63
<i>Lapses as % of offers</i>	<i>All Yrs</i>	48.9	54.2	47.7	39.7	41.6	57.7	43.2	55.6
	<i>Current Yr 12</i>	69.3	73.3	67.9	47.7	61.8	80.9	68.8	81.8

OTHER APPLICANTS

Mature Age WA Year 12 consists of those applicants who were over 20 years of age before 1 March 2017, applying on the basis of an ATAR obtained in the current year (2016). Non-WA Year 12 includes all applicants who did not complete WA Year 12 in the current year, and includes interstate school leavers.

Mature Age WA Year 12 applicants received a slightly higher percentage of offers to applications (72.7%) compared to non-WA Year 12 applicants (69.1%).

Table I: Applications, Offers and Enrolments for Mature Age WA Year 12 and Non-WA Year 12 Applicants, 2016-2017.

	Mature Age WA Yr 12		Non-WA Yr 12	
	2017	2016	2017	2016
Applications	44	56	5,863	5,744
Total Offers	32	48	4,049	4,661
(% of applications)	72.7	85.7	69.1	81.1
Total Enrolments	27	31	3,077	3,569
(% of offers)	84.4	64.6	76	76.6
1st Pref Offers	17	29	3,267	3,941
(% of applications)	38.6	51.8	55.7	68.6
1st Pref Enrolments	13	19	2,684	3,189
(% of 1st Pref offers)	76.5	65.5	82.2	80.9
Deferrals	1	5	234	345
(% of offers)	3.1	10.4	5.8	7.4
Lapses	4	12	738	747
(% of offers)	12.5	25.0	18.2	16.0

The data in Table J below includes all applicants who declared New Zealand or other overseas school leaving qualifications, the International Baccalaureate (IB) or the STAT. Note that an applicant who completed high school overseas and then sat the STAT prior to application would be counted in both the STAT and Overseas data.

Table J: Applications, Offers and Enrolments for those declaring New Zealand School Leaving, STAT, International Baccalaureate or Other Overseas School Leaving, 2016-2017.

	New Zealand		STAT		IB		Overseas	
	2017	2016	2017	2016	2017	2016	2017	2016
Applications	66	50	606	758	155	103	323	319
(% of total applications)	0.4	0.3	3.3	4.1	0.8	0.6	1.8	1.7
Offers	27	29	495	667	103	79	238	260
(% of applications)	40.9	58.0	81.7	88.0	66.5	76.7	73.7	81.5
Enrolments	15	19	416	552	57	38	173	186
(% of offers)	55.6	65.5	84	72.8	55.3	48.1	72.7	71.5
Deferrals	2	5	27	51	13	4	16	25
(% of offers)	7.4	17.2	5.5	7.6	12.6	5.1	6.7	9.6
Lapses	10	5	52	64	33	37	49	49
(% of offers)	37	17.2	10.5	9.6	32	46.8	20.6	18.8

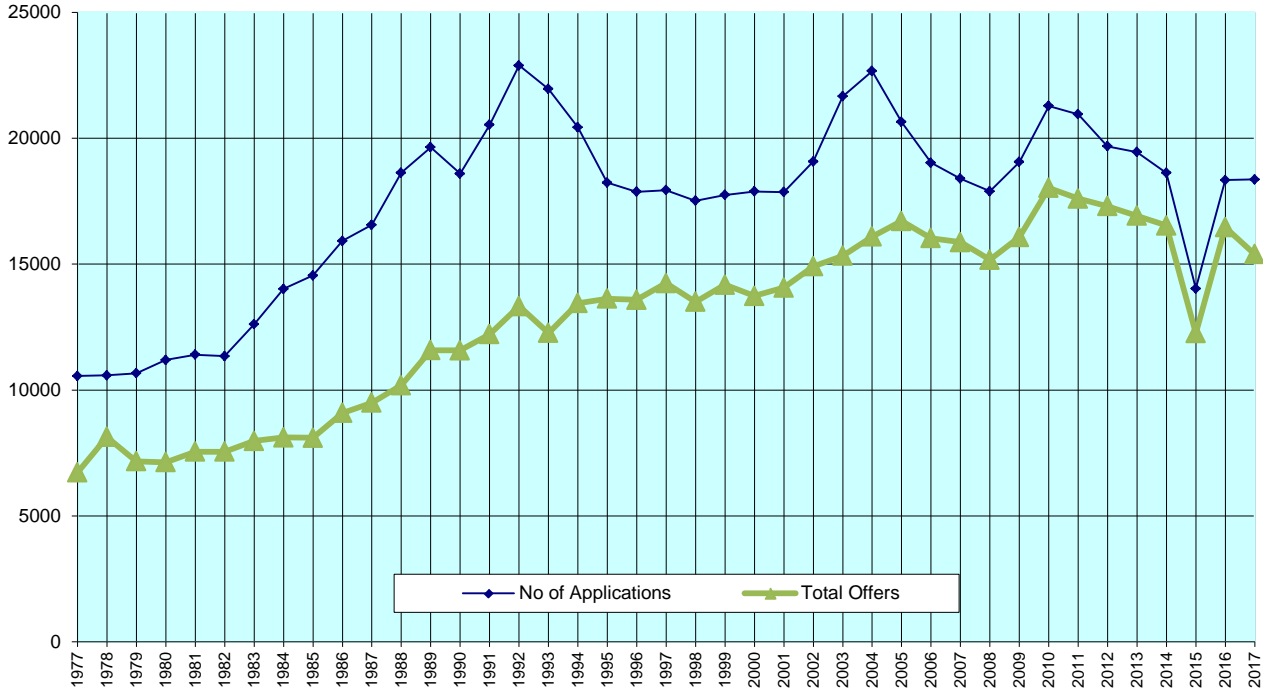
FLOW PATTERN OF NON-WA YEAR 12 APPLICATIONS

The table below shows the number of non-WA Year 12 applications received and the total number that had been fully processed at the given dates.

Table K: Flow of Non-WA Year 12 Applications Processing, 2015/2016 – 2016/2017

	2016/2017			2015/2016		
	<i>Total Received</i>	<i>Total Processed</i>	<i>% Processed</i>	<i>Total Received</i>	<i>Total Processed</i>	<i>% Processed</i>
6 July	24	0				
13 July	42	0				
20 July	120	0				
27 July	184	0				
3 August	281	0				
10 August	455	325				
17 August	642	459	71.5			
24 August	894	682	76.2	682	515	75.5
31 August	1,143	904	79.1	895	701	78.3
7 September	1,431	1,172	82.0	1,169	924	79.0
14 September	1,759	1,484	84.3	1,497	1,224	81.7
21 September	2,212	1,871	84.5	1,946	1,548	79.5
28 September	2,806	2,328	83.0	2,663	2,118	83.3
5 October	3,496	2,714	77.6	2,952	2,511	85.0
12 October	3,631	3,163	87.1	3,076	2,760	89.7
19 October	3,764	3,449	91.6	3,280	3,025	92.2
26 October	3,910	3,677	94.0	3,460	3,253	94.0
2 November	4,065	3,906	96.0	3,635	3,449	94.9
9 November	4,251	4,113	96.7	3,953	3,783	95.7
16 November	4,432	4,292	96.8	4,068	3,915	96.2
23 November	4,596	4,441	96.6	4,721	4,171	88.3
30 November	4,766	4,658	97.7	4,587	4,327	94.3
7 December	4,952	4,847	97.8	4,700	4,618	98.2
14 December	5,060	4,977	98.3	4,833	4,790	99.1
21 December	5,199	5,103	98.1	4,966	4,911	98.9
28 December	5,284	5,179	98.0	5,045	4,992	98.9
4 January	5,439	5,384	98.9	5,243	5,175	98.7
11 January	5,570	5,570	100	5,315	5,315	100
25 January	5,867	5,867	100	5,312	5,312	100
FINAL	5,867	5,867	100%	5,742	5,742	100%

APPLICATIONS AND OFFER STATISTICS 1977-2017*



WEB SITE STATISTICS

Overview

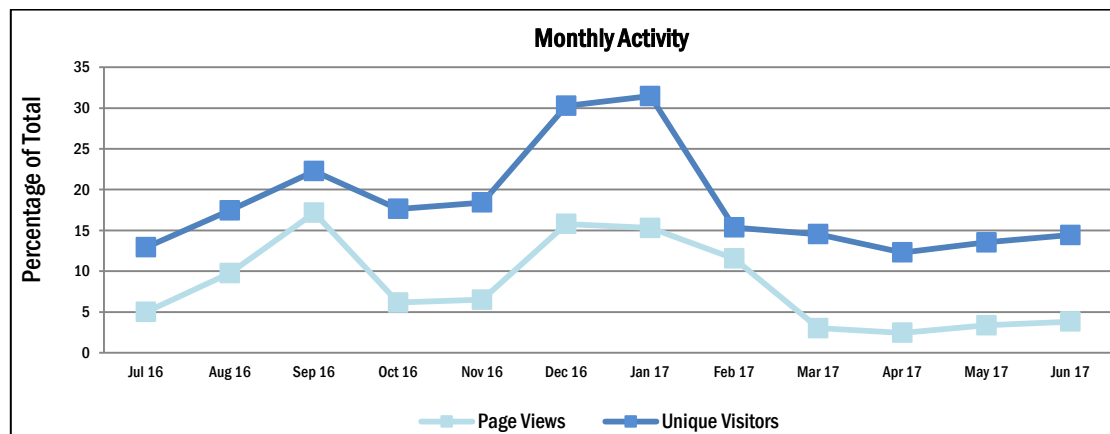
These statistics relate to TISC's public website (www.tisc.edu.au) for a period from 1 July 2016 to 30 June 2017. The new-look website interface was commissioned on 21 November 2016; however, no noticeable changes to statistics or usability trend have been noticed in comparison to previous years. Also, the website statistics from this year have been trimmed to maintain focus on the core services.

This year overall over 340 thousand unique visitors were recorded who viewed contents pages over 16.6 million times.

The three busiest periods were release of WA Year 12 results leading to applications & preferences deadline for the main round, release of main round offers leading to applications & preferences deadline for the second round and the week leading to deadline for on-time applications respectively. These three events recorded over 81 thousand (24% of total) unique visitors, viewing contents pages over 3.9 million times (23% of total).

The most utilised three primary services in order of usage were the Course Search & course related information, ATAR Calculator & ATAR related information and key event dates.

The graph below shows overall monthly activity as percentage of unique visitors and contents page views.



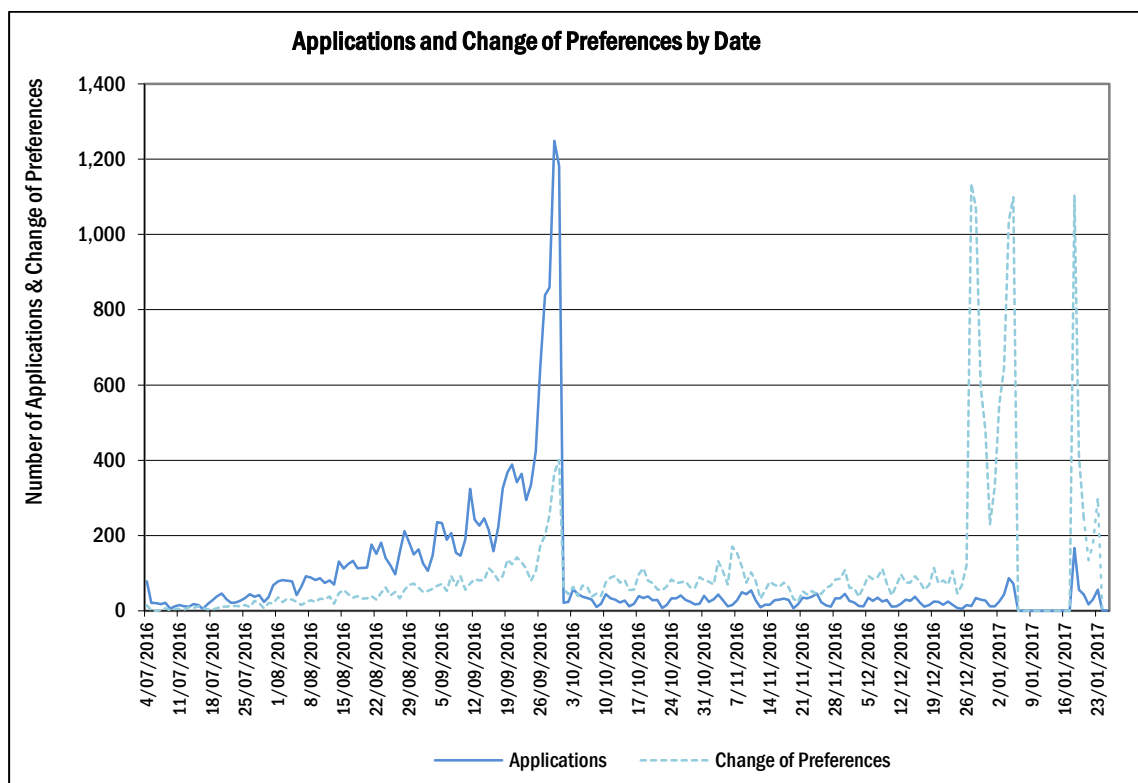
University Admissions Applications

This year applications opened on 4 July 2016, a month earlier than the previous years. For the year, a total of 18,361 web applications (12,465 WA Year 12 and 5,863 Non-WA Year 12) were submitted and over 98% were paid online.

Over 96% of the change of preferences took place online and round 4% were performed by TISC staff to address withdrawals and late corrections.

The graph below shows daily activity for the number of applications submitted and changes of preferences committed online. A very high jump in applications towards end of September 2016 reflects a rush to beat the on-time application deadline at 11:00pm 30 September.

The change of preferences show increased activity from the release of WA Year 12 results (27 December 2016) until closing date for main round offers preparation (6 January 2017), and from opening date for second round offers preparation (18 January 2017) until the final closing date (11:00pm 23 January 2017).



Results Online

The **WA Year 12 results** for 15,594 students, with at least one scaled score, were released at 4:00pm 27 December 2016. Out of which, over 90% (14,095) of students viewed their results online.

The main round **offers** were released at 9:00pm 16 January 2017 and 2nd round offers at 10:15am on 1 February 2017. Over 84% (11,349) of applicants with main round offers, and over 55% (1,637) of applicants with second round offers viewed their offers online.

The **WAUFP** Standard and Fast Track Results were released at 2:00pm 07 December 2016. Over 83% of WAUFP candidates viewed their results online.

Online Purchases and Subscriptions

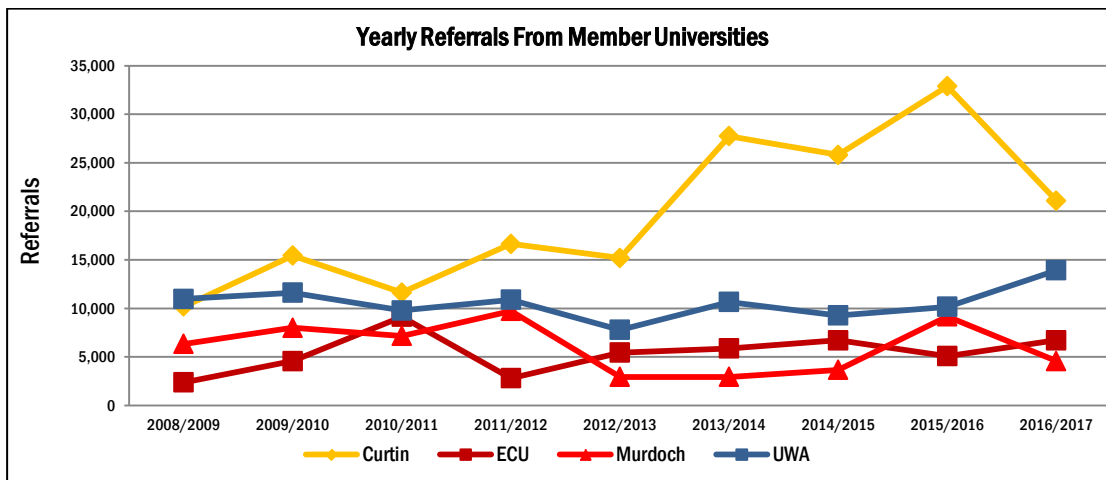
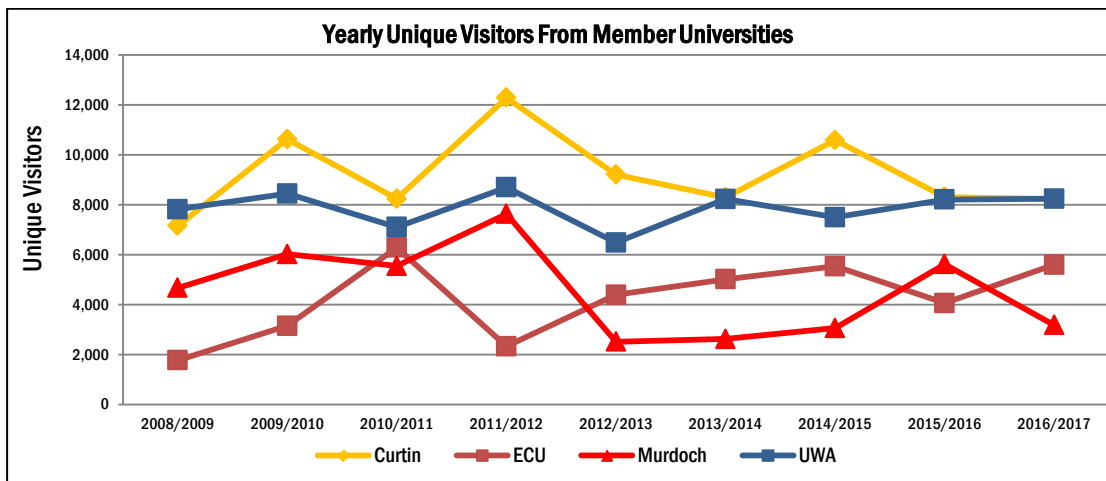
This year 1,669 students purchased 1,959 officially printed copies of the Universities Admission Advice Letter (UAAL).

The Subscription to TISC Updates is a free service. This year 238 new subscribers signed up bring the current active total to 2,568.

Web Traffic Source

The website draws a significant traffic from direct visits to the site and this year over 11 thousand unique visitors recorded over 3 million direct visits.

The referrals from 3rd parties contribute significantly. The four member universities recorded over 17 thousand unique visitor referrals comprising of over 8 thousand from Curtin, over 5 and half thousand from ECU, over 3 thousand from Murdoch and over 8 thousand from UWA. Graphs below show referrals traffic from member universities over the last nine years.



Two non-university websites with noticeable referrals were Facebook and School Curriculum and Standards Authority (SCSA). This year Facebook registered 22 and half thousand referrals (457% increase from last year) by around 9 thousand unique visitors (235% increase), and SCSA two and half thousand referrals (154% increase) by over 2 thousand unique visitors.

Referrals from major Search Engines are other major contributors with Google registering 66% (29 thousand) and Bing 33% (14 thousand) across all Search Engines referrals.

SPECIAL TERTIARY ADMISSIONS TEST

The Special Tertiary Admissions Test (STAT) is an aptitude test designed to assess a range of competencies considered important for success in tertiary study. Many tertiary institutions in Australia use STAT as part of their admissions procedures for mature-age applicants.

TISC uses two tests: a Multiple Choice test (STAT MC) and a Written English test (STAT WE). STAT MC is a two-hour test containing 70 questions, half of which have a verbal emphasis (social science/humanities) while the other half have a quantitative emphasis (mathematical/science). STAT WE is a one-hour written English test, consisting of two short essay questions. Part A is a public affairs issue that invites argument, while Part B asks candidates to write from a more personal point of view. Each section gives a choice of four topics.

Both tests are produced and marked by the Australian Council for Educational Research (ACER) in Victoria. Each year a number of questions in the test papers are changed so that all questions are replaced over a five-year period.

All interstate results are sent to TISC by the respective Tertiary Admissions Centre which places them into a national database.

All overseas test sessions are administered by ACER, who then forwards the results to TISC for inclusion in the national database.

STAT Enrolments

In the 2016 STAT year 1737 candidates attended STAT (this includes 563 school leaver candidates who sat in January). This is an increase on the previous year when 1679 candidates sat STAT.

The following table shows the breakdown of enrolments in each test as well as a comparison with previous years:

	2014		2015		2016	
	Booked	Attended	Booked	Attended	Booked	Attended
Written English & Multiple Choice	1132	1070	1105	1049	1018	970
Multiple Choice only*	188	194	183	189	176	186
Written English only*	455	456	444	441	577	581
Multiple Choice Total	1320	1264	1288	1238	1194	1156
Written English Total	1587	1526	1549	1490	1595	1551
Total Number of Candidates	1775	1720	1732	1679	1771	1737

* From the table, it can be seen that the numbers booked to sit only the Multiple Choice test and only the Written English test are less than those who actually sat the test. This is because some candidates enrol in both the Multiple Choice and the Written English tests, but then only sit the one section and do not reapply to sit the other section.

STAT Scores

For 2017 admission the minimum STAT scores required by the universities for candidates are as follows:

	Minimum MC score	Minimum WE Score
Curtin University	135 (Verbal or Quantitative)	140
Edith Cowan University	135 (Verbal or Quantitative)	140
Murdoch University	135 (Verbal or Quantitative)	140
The University of Western Australia:		
STAT alone entry	140 (Verbal Only)	160
Competence in English	140 (Verbal Only)	140

In 2016, 783 (80.7%) of the 970 candidates who sat both STAT WE and STAT MC met the minimum requirement for admission to Curtin, ECU and Murdoch universities.

Of the 970 candidates who sat STAT MC and STAT WE, 314 (32.4%) obtained the minimum marks of 140 in STAT MC (Verbal) and 160 in STAT WE required by UWA.

There is the possibility that there may be scores slightly below 100 and slightly above 200.

The results are shown below in table form:

	Minimum Score	Maximum Score	Mean	Standard Deviation
STAT MC	122	185	149.63	10.39
STAT WE	100	200	153.17	10.39

Testing sessions in the metropolitan area

There were ten metropolitan sessions run throughout the year at Canning College in Bentley. The dates for these are shown below:

7 May 2016	15 October 2016
28 May 2016	5 November 2016
18 June 2016	26 November 2016
20 August 2016	7 January 2017
17 September 2016	28 January 2017

The first three sessions were held in semester one, primarily for second semester university.

An extra January session was held again this year. 77 candidates booked for this session and 75 attended. Results were not available in time for the second round of offers.

There were two special sessions (one in May, the other in November) held on a Friday morning at TISC for people who, for work or religious reasons, could not sit STAT on a Saturday. These two sessions help minimise the number of individual sittings at TISC for candidates in this category. The first of these sessions was held on 20 May 2016 and 1 candidate sat the STAT WE only (2 in May 2015). The second session was held on 18 November 2016 and 5 candidates sat STAT MC and STAT WE (4 in November 2015).

Sessions were also organised for 18 candidates with special needs where a disability was involved:

- 9 candidates who only required extra time did their test at Canning College. They were school leavers invited to sit STAT in order to meet the competence in English requirement of the universities.
- The remaining 9 candidates sat the test at TISC.

No additional charge was raised by TISC for organising and running the sessions for these 18 candidates.

Scheduled testing sessions in regional areas

Tests in regional areas were held during a specified week in both May and November 2016. This week is advertised every year on the STAT booking form. Venues and supervisors are organised by the STAT Coordinator.

In May 2016, 10 sessions were held in 10 regional centres, and in November 2016, 9 sessions were held in 9 centres including 7 of the centres where a session was held in May 2016.

There were a similar number of country STAT sessions held as in the previous year. There were 51 candidates who enrolled to sit the STAT in regional areas in 2016 compared to 49 in 2015. Enrolments for the 2016 country testing sessions were as follows:

Centres	Numbers Booked	Centres	Numbers Booked
Albany	8	Kalgoorlie	7
Broome	1	Karratha	2
Bunbury	15	Kellerberrin	1
Derby	1	Kununurra	3
Esperance	4	Port Hedland	3
Geraldton	5	Tom Price	1
		Total	51

Below is a comparison of the total number of enrolments for the country STAT from 2012 through to 2016.

	2012	2013	2014	2015	2016
STAT Multiple Choice	72	55	54	45	40
STAT Written English	69	56	54	48	46

Scheduled testing sessions in prisons

TISC has a very flexible policy for scheduling testing sessions in prisons as the prisons have Education Officers available to supervise the candidates. Contact is made with the Education Officers each year and sessions can be held on a week day between May and November each year. For the last three years, only a few prisons have held STAT sessions each year (2 prisons in 2015, 2 prisons in 2014, 2 prisons in 2013, 2 prisons in 2012).

During the 2016 STAT year there were no sessions run in prisons.

Special use of STAT

A large number of candidates sitting the 7 January 2017 session were Year 12 students who had achieved a competitive ATAR but had not met competence in English. Results were available in time for the main round of university offers.

The University of Western Australia requires Year 12 students to take both STAT Written English and STAT Multiple Choice tests and to achieve a mark of 140 or better in both STAT WE and STAT MC (Verbal component). The other three public universities require Year 12 students to sit STAT WE only and to achieve a mark of 140 or better in this test.

There were 563 Year 12 students sitting the STAT in January 2017, of whom 382 sat STAT WE only. The number of students sitting only STAT WE increased by 27.5% on the 277 who sat in the previous year.

90.6% of those who used only STAT WE to meet literacy actually met this requirement. 71.3% of those using both STAT MC and STAT WE met competence in English for UWA.

The figures for 2016 (2015) are shown in the table below.

Attended	STAT MC + WE		STAT WE only	
	181 (126)		382 (277)	
	Population	%	Population	%
Met UWA requirement of WE mark and MC verbal mark ≥ 140	129 (99)	71.3 (78.6)	-	-
Met Curtin, ECU and Murdoch requirement of WE mark ≥ 140	161 (117)	88.9 (92.9)	346 (257)	90.6 (92.8)

**NB: Among the 28.7% who did not meet the literacy requirement for UWA via STAT MC and STAT WE, a number of candidates may have met the requirement via STAT WE (for ECU, Curtin University and Murdoch University) if their English mark was 140 or more.*

A January STAT comparison with the past years' figures is shown below:

Year	Total number of candidates	STAT Multiple Choice (MC)	STAT Written English (WE)	Score of ≥ 140 in WE	% Achieving ≥ 140 in WE	Score of ≥ 140 in STAT MC (Verbal) + in STAT WE	% Achieving ≥ 140 in STAT MC (Verbal) + in STAT WE
2014	299	102	299	239	79.9%	64	62.7%
2015	403	126	403	374	92.8%	99	78.6%
2016	563	181	563	507	90.1%	129	71.3%

STAT National Database

The STAT National Database was established in November 1996. It was developed and is administered by TISC. It contains results for all candidates who have sat STAT in Australia from 1996 onwards.

The interstate Tertiary Admissions Centres and ACER send results files electronically after each STAT sitting in their state and overseas.

Changes that occurred in 2016

1. Security was used at Canning College for the 7 January testing session only, due to the number of candidates sitting.
2. For 2017 admission ECU increased the minimum mark required for the Multiple Choice test from 110 to 135. This is the same as Curtin and Murdoch.
3. ACER took over the running of the STAT in NSW at the request of UAC.
4. An additional session was again held on 28 January 2017 at the request of the universities. 75 candidates attended this session compared with 60 who sat the 30 January 2016 test.

WESTERN AUSTRALIAN UNIVERSITIES' FOUNDATION PROGRAM

The Western Australian Universities' Foundation Program (WAUFP) is a course of academic study for entry to the four public universities in Western Australia. The program is designed for international students who do not have a strong English language background and whose matriculation level is not sufficient for entry into Western Australian universities. The program commenced in 1993 and runs from February or April to November.

Fast Track WAUFP is designed for above average international students who have met academic background requirements of university entrance. It aims to give the students an opportunity to experience teaching and learning in the English language medium and to provide them with the opportunity to remedy any deficiencies in their academic background. The program commenced in 1999 and ran from August to mid-December at Tuart College. In 2006 the length of the Fast Track program was extended and now runs from June to December.

The WAUFP Mid-Year Entry program commenced in 2013 and runs from August to June. The statistics in this report relate to the current (2016-17) cohort, so statistics regarding the final examinations are not included.

PROVIDER COLLEGES AND STUDENT NUMBERS

Provider Colleges in 2016 were:

- Canning College (WAUFP and Mid-Year WAUFP)
- The Experimental School Affiliated to Nanjing Normal University, China (WAUFP) (referred to as Nanjing throughout this report)
- St George's Anglican Grammar School (WAUFP)
- Tuart College (Fast Track WAUFP)

Student enrolments by college

a) WAUFP

The final number of students enrolled in 2016 was 122 as compared to 140 in 2015. This was a decrease of 12.9%. Student numbers have declined by 65% from 2010 numbers.

Final College enrolments were as follows for 2016 (2015):

Canning College	95 (120) students
St George's Anglican Grammar School	10 (20) students
Nanjing	17 (-) students
Total	122 (140) students

b) Fast Track WAUFP

Eighteen students enrolled in the Fast Track program at Tuart College in 2016 compared to 11 in 2015 and 9 in 2014.

c) Mid-Year WAUFP

Fourteen students completed the 2016/2017 program at Canning College compared with 13 in 2016 and 17 in 2015.

STUDENT SUBJECT ENROLMENTS

13 subjects were offered in WAUFP, 8 subjects were offered in Fast Track, and 7 subjects were offered in the Mid-Year Entry program. The numbers of students who sat each subject examination are shown in the table on the following page.

SUBJECTS	STANDARD	FAST TRACK	MID-YEAR 16/17
Accounting and Finance	27 (37)	11 (7)	8 (7)
Business Management and Enterprise	19 (21)	-	-
Chemistry	62 (70)	7 (4)	7 (9)
Computer Science	18 (35)	-	10 (11)
Earth and Environmental Science	2 (9)	-	-
Economics	9 (23)	11 (7)	-
ELACS	121 (137)	18 (11)	14 (16)
Human Biology	38 (45)	-	-
Mathematics Applications	51 (58 – MAT3AB)	7 (5 – MAT2CD)	13 (8 - MAT 3AB)
Mathematics Methods	94 (70 – MAT3CD)	11 (6 – MAT3CD)	8 (8 – MAT 3CD)
Mathematics Specialist	34 (32)	7 (4)	-
Physics	48 (47)	7 (4)	5 (9)
Psychology	24 (32)	-	-
Special Tertiary Admissions Test (STAT)	122 (139)	18 (11)	14 (16)

NATIONALITY GROUP

a) WAUFP

Over the past ten years over three quarters of all WAUFP students have come from Malaysia, China, Hong Kong, Singapore and Vietnam. The table below shows the changes over these years. Other students came from Brunei (1), Cambodia (1), Canada (2), India (1), Indonesia (1), Kazakhstan (1), Kenya (3), Macau (1), Myanmar (1), Portugal (1) and Zimbabwe (1).

Country	Percentage of students from different countries									
	2007	2008	2009	2010	2011	2012	2013	2014	2015	2016
Malaysia	35%	35%	36%	30%	33%	34%	38%	47%	43%	38%
China	20%	27%	30%	31%	29%	29%	33%	17%	21%	36%
Hong Kong	10%	10%	6%	8%	20%	10%	2%	4%	1%	4%
Singapore	11%	6%	5%	8%	9%	11%	10%	12%	17%	5%
Vietnam	2%	3%	5%	5%	3%	4%	4%	5%	4%	3%
Total	76%	78%	77%	77%	81%	84%	83%	85%	86%	86%

b) Fast Track WAUFP

All 18 students came from Indonesia.

c) Mid-Year WAUFP

Students came from China (2), Greece (1), Indonesia (1), Korea (1), Malaysia (5), Singapore (1) and Zambia (3).

SETTERS, CHECKERS AND MARKERS

a) WAUFP

Thirteen subject examination papers were written in 2016, one less than the previous year due to having only three mathematics courses in the new WACE ATAR course structure. All subjects, except ELACS, adopted the School Curriculum and Standards Authority WACE ATAR Year 12 syllabi. There were two new setters, one who set the Earth and Environmental Science paper and one who set the Psychology paper. There were five new Checkers, for Computer Science, Earth and Environmental Science, Economics, Human Biology and Psychology.

All papers were marked independently by 2 markers. The marking processes ran smoothly for most subjects, despite delays due to the return of papers from China.

b) Fast Track WAUFP

Apart from Mathematics Methods and Specialist exams, Tuart College staff set and marked the final examination papers and external checkers were appointed by TISC. The supervision and marking of the examinations went smoothly.

c) Mid-Year WAUFP

Seven subject examination papers were written for Mid-Year WAUFP examinations 2016/2017. All subjects, except ELACS, adopt the School Curriculum and Standards Authority WACE ATAR Year 12 syllabi. One new Setter is set the Chemistry paper – he had set the WAUFP Fast Track papers previously.

Most subject Checkers come from within the Provider Colleges (including retired teachers).

SPECIAL TERTIARY ADMISSIONS TEST (STAT)

The STAT Multiple Choice Section was held during the examination weeks. All tests ran smoothly and the results were used to scale students' final subject examinations.

Each student was sent a STAT Result Letter which was posted to them with their WAUFP Notification of Results.

FINAL EXAMINATIONS

a) WAUFP

An examination timetable was prepared by TISC and distributed to the colleges at the beginning of August. The final examinations were held over 2 weeks and coincided with the WACE examinations.

TISC organised the supervision of the examinations. The Chief Supervisors appointed to each college attended a training meeting at TISC the week before the commencement of the examinations. At this meeting all examination procedures were reviewed. All supervisors were sent a Supervisor's Manual outlining how to run the examinations and all signed a Supervisor's Agreement that outlined their duties. TISC ensured that all supervisors held a current Working with Children Check card.

Examinations were held in China for the first time and one experienced and one new supervisor travelled to Nanjing with the examination papers to supervise the exams.

All examinations ran smoothly and the supervisors managed these well. There were no complaints concerning the supervisors and there were no reports of students' cheating.

b) Fast Track WAUFP

An examination timetable was prepared by TISC in mid-November. Tuart College printed the examination papers and all examinations were held at the college. TISC organised the supervision of the examinations and all examinations ran smoothly.

c) Mid-Year WAUFP

An examination timetable was prepared by TISC and Canning College at the beginning of March.

TISC organised the supervision of the examinations. TISC ensured that all supervisors held a current Working with Children Check card.

All examinations ran smoothly and the supervisors managed these well. There were no complaints concerning the supervisors and there were no reports of students' cheating.

EVALUATION OF THE EXAMINATION PAPERS

An evaluation sheet was sent to all colleges to gain feedback from teachers but only a few teachers responded. Those who did respond had specific feedback that was forwarded on to the Setters concerned.

Serious concerns were raised by Canning College regarding the Chemistry paper and the marks for the papers were subsequently adjusted. Marks were monitored closely through the scaling process to ensure no major disadvantage to Chemistry students.

SUBJECT MODERATION

a) WAUFP

Moderation of each college's assessments was carried out by standardising them to the same mean and standard deviation as the exam results of each college.

SCALING

a) WAUFP

The Scaling Meeting was held on 1 December. Members of the Scaling Committee were emailed the agenda and a summary of the WAUFP Scaling Process before the meeting.

b) Fast Track WAUFP

The WAUFP Moderation/Scaling Committee delegated the scaling of Fast Track to the Executive Officer of TISC. On 6 December the Fast Track students' results were scaled by TISC. Given the very small numbers the scaling was a manual process.

Tuart College supplied internal assessment marks for all students. This additional information helped in the scaling process. The students' final marks were derived using 25% School Assessment and 75% Raw Examination Marks. The students' STAT results and comments on their ability from their teachers were also used in the process.

c) Mid-Year WAUFP

The WAUFP Moderation/Scaling Committee delegated the scaling of Mid-Year examinations to the Executive Officer of TISC. On 6 June the Mid-Year students' results were scaled by TISC. Given the very small numbers the scaling was a manual process.

Canning College supplied internal assessment marks for all students. The students' STAT results and comments on their ability from their teachers were also used in the process.

NOTIFICATION OF RESULTS

On 7 December all WAUFP and Fast Track results were made available on the TISC website and Results Letters were despatched. TISC uploaded results for the International Centre of each university and also for the Provider Colleges.

RELATIONSHIP BETWEEN ELACS RESULTS AND THE CPS

a) WAUFP

	Number of students		
	with a CPS < 50	with a CPS ≥50	Total
Number of students with an ELACS score < 50	14	3	17
Number of students with an ELACS score ≥50	10	95 (78%)	105
Total	24	98	122

b) Changes over the last 10 years

The variations in the percentage of students with a CPS and ELACS score ≥50 (minimum requirement for university admission) reflects the differences in the abilities of the student cohort from year to year.

Year	% of students with a CPS and ELACS score ≥ 50
2007	70
2008	69
2009	62
2010	68
2011	67
2012	72
2013	70
2014	72
2015	74
2016	78

c) Fast Track WAUFP

	Number of students		
	with a CPS < 50	with a CPS ≥50	Total
Number of students with an ELACS score < 50	1	0	1
Number of students with an ELACS score ≥50	2	15 (83%)	17
Total	3	15	18

d) Mid-Year WAUFP

	Number of students		
	with a CPS < 50	with a CPS ≥50	Total
Number of students with an ELACS score < 50	1	1	2
Number of students with an ELACS score ≥50	6	6 (43%)	12
Total	7	7	14

CERTIFICATES OF ACHIEVEMENT AND LETTERS OF CONGRATULATIONS

Certificates of Achievement were awarded to 78% of WAUFP students, 83% of Fast Track students and 43% of Mid-Year students.

Students received a certificate if they:

- Scored 50 or higher in the subject ELACS and therefore achieved English language competency, and
- Obtained a Combined Percentage Score (CPS) of at least 50.

Letters of congratulations were sent to students who had a CPS in the top 5%, and the top student in each subject with an enrolment of 10 or more students.

FUTURE CHANGES

1. There will be a Mathematics bonus for students studying Mathematics Methods and/or Mathematics Specialist from 2017.
2. There will be changes to the unacceptable combinations for Mathematics subjects in 2018:
 - Mathematics Applications and Mathematics Methods cannot both be counted as part of the CPS.
 - Mathematics Applications and Mathematics Specialist cannot both be counted as part of the CPS.
3. There will be a formal review of the ELACS syllabus in 2017 with the new syllabus to take effect in 2018.

SCHOOL VISITS

TISC staff were invited to visit 70 metropolitan and country schools to present information to major interest groups:

- Year 12 staff
- Year 12 students (and parents)
- School staff development days

We estimate around 5,700 people attended presentations by TISC over this period.

The information presented centred on the Australian Tertiary Admission Rank (ATAR), requirements for university entry, the marks adjustment processes, preference and offer systems as well as the services provided on the web. Presentations varied from 20-45 minutes.

2016

Metropolitan Schools	
July	Helena College, Mt Lawley Senior High School, Kennedy Baptist College, Frederick Irwin Anglican School, John Septimus Roe Anglican Community School, John Wollaston Anglican Community School, Thornlie Senior High School, John Septimus Roe Anglican Community School, Corpus Christi College, Carine Senior High School
August	Trinity College, St Stephen's School, Wanneroo Secondary College, Christ Church Grammar, Rossmoyne SHS, John XXIII, Shenton College, Living Waters Lutheran College, Shenton College, St Brigid's College, Leeming SHS, Mazenod College, John Forrest Secondary College, Girrawheen Senior High School, Governor Stirling Senior High School, St Mary's Anglican Girls' School, Canning Vale College, Ocean Reef Senior High School, Seton Catholic College, Mindarie Senior College, St Hilda's Anglican Girls' School, Churchlands Senior High School Servite College
September	Presbyterian Ladies' College, John Curtin College of the Arts, Santa Maria College

Country Schools	
July	Great Southern Grammar, Mt Barker Community College, St Joseph's College, Denmark Senior High School,
August	Australind Senior High School, Newton Moore Senior High School, Cornerstone Christian College, Dalyellup College, Georgiana Molloy Anglican School, Bunbury Senior High School, Bunbury Cathedral Grammar School, St Mary MacKillop Catholic College, Collie Senior High School, Manea Senior College, Bunbury Catholic College, Busselton Senior High School, Eastern Goldfields College, John Paul College

2017

Metropolitan Schools	
February	Notre Dame University, Butler College, St George's Anglican Community School, Shenton College
March/April	Belridge Secondary College, Swan Valley Anglican Community School, Wesley College, Atwell College
May/June	Rossmoyne SHS, Belmont City College,, Presbyterian Ladies College, Aranmore College, Santa Maria College, Irene McCormack Catholic College, Frederick Irwin Anglican School, Northam Senior High School

SCHEDULE OF DATES

Major Dates for Undergraduate Admissions

Date	Principal event
<i>4 July 2016</i>	Applications for undergraduate admission open
<i>August 2016</i>	<i>2017 TISC Guide</i> despatched to all secondary schools with Year 12 students.
<i>30 September 2016</i>	Closing date for receipt of undergraduate admission application forms and applications via the web without incurring a late fee.
<i>30 September 2016</i>	A late application fee of \$150 applied.
<i>29 December 2016</i>	Western Australian 2016 Year 12 students' results available on the TISC website.
<i>29 December 2016</i>	Universities Admission Advice Letter posted to WA Year 12 students who had requested and paid for copies.
<i>5 January 2017</i>	Closing date for change of preference for main round of offers.
<i>18 January 2017</i>	University offers available on the TISC website. Despatch of main round of offers to undergraduate courses.
<i>23 January 2017</i>	Closing date for late applications.
<i>23 January 2017</i>	Closing date for change of preferences for inclusion in second round of offers.
<i>1 February 2017</i>	Second round offers available on the TISC website. Despatch of second round offers. TISC notified all unsuccessful applicants at this time.
<i>May 2017</i>	2018 Course Prospectuses from all universities despatched to all secondary schools for distribution to Year 12 students.

TISC PUBLICATIONS

The following TISC publications were distributed/published between July 2016 and June 2017:

- 2017 TISC Guide
- 2016 and 2017 STAT Booking Form
- Western Australian Universities' Foundation Program 2017 Administrative Procedures Manual

Pamphlets/Flyers/Posters

- Guide to the Universities Admission Advice Letter
- Release of Scaled Scores and ATARs (Information sheet)

Online Publications

- Admission Requirements for School Leavers 2020
- Admission Requirements for Mature Age Students 2018
- International Baccalaureate brochure 2018
- Statistics (2016/2017)
 - Application and Offer Statistics – 2016/2017
- Cut-Off Ranks 2017
- Guaranteed ATARs 2017
- Minimum ATARs 2017
- ATAR Statistics (2016)
 - ATAR Frequency Distribution Table
 - ATAR Gender Breakdown
 - WACE Courses used in ATAR
- Scaling Statistics (2016)
 - Histograms and Scaled Scores Statistics for WACE courses
 - Scaling Populations and Means
 - Scaling Information Sheet 2016
 - Summary Scaling Statistics – Percentages Greater than Specified Score
 - Summary Scaling Statistics – Scaled Scores for Specified Percentiles
- TISC School Circulars 2016 – 2017
- TISC Powerpoint Presentation for WA Year 12 students
- Annual Report 2015/2016

SCHEDULE OF FEES AND CHARGES

Service	Fee*
Application processing fee for WA Year 12 school leaver applicants up to September closing date	\$33.00
Application processing fee for non-school leaver applicants up to September closing date	\$65.00
Application processing fee (after September closing date)—all applicants	\$155.00
Despatch of TISC Guide to: Within Australia Overseas	\$20.00 \$30.00
Duplicate Documents (UAAL, STAT or WAUFP results)	\$38.00
Initial hard copy of current UAAL additional copies (in the same transaction)	\$17.00 \$ 8.00
Certification of documents for interstate Admissions Centres	\$8 (plus \$1 per page)
Checking ATAR calculation	\$38.00
Annual Report	No cost, available on web
STAT: One test only on one day (includes sample question booklet) Both tests on one day (includes sample question booklet) Special supervision fee (not applicable to special needs candidates) Change of session fee Cancellation fee (prior to one full working day before test) Sample Question Booklet 2 (red cover) - ACER Despatch on behalf of ACER	\$150.00 \$200.00 \$70.00 \$60.00 \$60.00 no longer printed \$20.00
FOI request	Fees (GST exempt) set by the FOI Commissioner
WAUFP Standard Intake 1, 2 (February/April to November) support up to 13 Subjects Registration Fee Additional Subject (written only) Additional Subject (with a practical) Mid-Year (August to June) support up to 7 Subjects – One College only Registration Fee Additional Subject (written only) Additional Subject (with a practical) Fast-Track (June to December) Support up to 5 Subjects – One College only Registration fee (Fast-Track) Additional Subject (written only) WAUFP Private Candidate fee	\$1,200/student or \$30,000 per college \$4,800 \$5,900 \$1,075/student or \$40,000 per college \$4,300 \$5,300 \$720/student or \$10,800 per college \$1,750 \$90
WAUFP: Withdrawal of student after registration – Refund of: \$870 for WAUFP Standard (Intake 1 & 2) \$870 for WAUFP Intake 2 by 2 June \$820 for WAUFP Mid-Year \$470 for WAUFP Fast-Track No refund given after set date for program.	

* GST inclusive

APPENDICES

	Page
APPENDIX A CUSTOMER SERVICE STATISTICS	
Table 1 – Customer Service Statistics for Counter Enquiries	38
Table 2 – Customer Service Statistics for Phone Enquiries	39
Table 3 – Customer Service Statistics for Email Enquiries	40
APPENDIX B WESTERN AUSTRALIAN UNIVERSITIES' FOUNDATION PROGRAM STATISTICS	
Table 1 – 2015 WAUFP Subject Statistics	42
Table 2 – 2015 WAUFP Moderation Statistics	43

Note: Detailed statistics on applications, offer and enrolments by course within a university for Undergraduate courses are on www.tisc.edu.au

		Page
Table 1	Customer Service Statistics for Counter Enquiries	38
Table 2	Customer Service Statistics for Phone Enquiries	39
Table 3	Customer Service Statistics for Email Enquiries	40

Table 1: Customer Service Statistics for **Counter Enquiries**

MONTH	STAT	DUPLICATE DOCUMENTS	ADMISSION REQUIREMENTS	UNI APPLICATION PAYMENTS	UNI APPLICATION ENQUIRIES	UNI APPLICATION DOCUMENTS	CERTIFICATION OF DOCUMENTS	CHANGE OF PREFERENCE	UAAL	OFFERS	WAUFP	TERMINAL USE (Counter)	DELIVERIES	VISITORS	MISC	TOTAL CUSTOMERS**
Jul-16	11	20	8	0	6	18	0	0	0	0	0	1	63	23	2	153
Aug-16	30	21	6	7	12	95	2	1	0	0	0	8	60	28	3	273
Sep-16	31	27	2	31	18	224	2	0	0	0	0	52	53	9	1	440
Oct-16	47	24	0	18	10	231	1	0	3	1	0	53	57	12	0	456
Nov-16	115	20	5	15	24	234	0	1	0	0	0	4	86	10	0	514
Dec-16	290	23	3	13	11	242	0	1	2	0	0	47	52	8	0	692
Jan-17	293	56	2	12	20	233	2	1	0	3	0	34	70	2	0	728
Feb-17	2	55	0	1	2	2	0	1	0	0	0	0	47	10	2	122
Total	819	246	26	97	93	1279	7	5	5	3	0	199	488	102	8	3377
Total 2015	673	169	8	125	68	1223	9	11	9	7	0	142	526	166	12	2971

** Includes customers with multiple requests for information

Table 1: Customer Service Statistics for **Counter Enquiries**

MONTH	STAT	DUPLICATE DOCUMENTS	ADMISSION REQUIREMENTS	UNI APPLICATION PAYMENTS	UNI APPLICATION ENQUIRIES	UNI APPLICATION DOCUMENTS	CERTIFICATION OF DOCUMENTS	CHANGE OF PREFERENCE	UAAL	OFFERS	WAUFP	TERMINAL USE (Counter)	DELIVERIES	VISITORS	MISC	TOTAL CUSTOMERS**
Jul-16	11	20	8	0	6	18	0	0	0	0	0	1	63	23	2	153
Aug-16	30	21	6	7	12	95	2	1	0	0	0	8	60	28	3	273
Sep-16	31	27	2	31	18	224	2	0	0	0	0	52	53	9	1	440
Oct-16	47	24	0	18	10	231	1	0	3	1	0	53	57	12	0	456
Nov-16	115	20	5	15	24	234	0	1	0	0	0	4	86	10	0	514
Dec-16	290	23	3	13	11	242	0	1	2	0	0	47	52	8	0	692
Jan-17	293	56	2	12	20	233	2	1	0	3	0	34	70	2	0	728
Feb-17	2	55	0	1	2	2	0	1	0	0	0	0	47	10	2	122
Total	819	246	26	97	93	1279	7	5	5	3	0	199	488	102	8	3377
Total 2015	673	169	8	125	68	1223	9	11	9	7	0	142	526	166	12	2971

** Includes customers with multiple requests for information

Table 3: Customer Service Statistics for **Email Enquiries**

MONTH	ATAR	BROWSER ISSUES	COP - COURSE INFO	CURRENT UNDERGRAD APPS	DEFERMENT	DUPLICATE DOCS	GENERAL INFORMATION	OFFERS	PASSWORD RESET/USER ID	SCALING	SCHOOL/ORGANISATION QUERY	STAT	WAUFP	TOTAL EMAILS
Jul-16	20	5	6	15	0	27	35	3	109	0	10	7	4	241
Aug-16	18	10	18	79	2	32	100	5	268	0	25	21	5	583
Sep-16	21	43	35	166	0	42	134	1	530	0	15	47	0	1034
Oct-16	16	11	11	94	1	18	84	7	64	0	21	47	0	374
Nov-16	33	7	11	94	1	37	67	7	104	1	21	43	2	428
Dec-16	62	6	31	93	0	26	54	14	439	23	19	52	21	840
Jan-17	42	0	89	111	8	26	68	191	143	13	16	75	4	786
Feb-17	10	0	3	12	2	41	18	36	27	0	6	13	0	168
Total	222	82	204	664	14	249	560	264	1684	37	133	305	36	4454
Total 2015	114	91	153	719	14	236	391	190	1913	36	120	257	28	4262

		Page
Table 1	Western Australian University Foundation Program Subject Statistics 2015	42
Table 2	Western Australian University Foundation Program Moderation Statistics 2015	43

2016 WAUFP Subjects Statistics

Subject	Scaling population	Scores	max	min	mean	stddev	% > 50
Accounting and Finance	26	combined	73.68	2.50	39.01	20.42	30.77
		scaled	87.50	8.18	58.89	19.65	63.16
Business Management and Enterprise	19	combined	88.14	11.84	50.58	19.62	52.53
		scaled	81.22	15.78	54.99	16.11	63.16
Chemistry	62	combined	92.52	9.09	47.92	23.41	46.77
		scaled	96.16	17.22	62.56	22.41	69.35
Computer Science	18	combined	61.34	27.10	42.92	9.21	33.33
		scaled	77.12	33.64	57.49	13.32	66.67
Earth and Environmental Science	2	combined	77.40	60.50	68.95	8.45	100.00
		scaled	77.40	60.50	68.95	8.45	100.00
Economics	9	combined	58.04	6.51	38.67	16.81	33.33
		scaled	75.66	11.72	53.05	20.52	66.67
ELACS	121	combined	84.59	8.87	47.42	16.13	45.45
		scaled	91.63	18.77	65.84	14.74	85.95
Human Biology	38	combined	85.63	33.84	59.96	15.64	68.42
		scaled	88.24	33.84	66.37	16.03	78.95
Mathematics Applications	51	combined	95.65	10.39	64.57	19.47	76.47
		scaled	91.73	9.12	57.35	17.36	70.59
Mathematics Specialist	6	combined	81.14	6.59	42.17	20.23	35.29
	58	scaled	92.37	14.82	63.17	22.15	70.59
Mathematics Methods	70	combined	93.19	1.76	52.45	24.99	57.45
		scaled	93.53	3.17	61.03	21.92	76.60
Physics	48	combined	85.23	2.38	39.59	21.55	35.42
		scaled	97.20	5.34	62.32	26.34	66.67
Psychology	24	combined	90.65	13.52	54.95	18.82	79.17
		scaled	92.89	17.38	59.95	18.44	79.17

2016 Moderation Statistics

Subject	Scaling population		Assessment	Exam	Moderated Assessment
Accounting and Finance	26	mean	48.85	38.98	39.04
		stdev	14.50	20.87	20.76
Business Management and Enterprise	19	mean	46.74	50.58	50.58
		stdev	15.14	20.12	20.12
Chemistry	62	mean	55.87	47.92	47.92
		stdev	17.27	23.68	23.68
Computer Science	18	mean	55.83	42.92	42.92
		stdev	10.84	9.48	9.48
Earth and Environmental Science	2	mean	71.00	68.95	68.95
		stdev	4.00	8.45	8.45
Economics	9	mean	53.50	38.67	38.67
		stdev	16.83	17.17	17.17
ELACS	121	mean	56.50	47.42	47.42
		stdev	13.12	16.40	16.40
Human Biological	38	mean	64.74	59.96	59.96
		stdev	14.98	15.94	15.94
Mathematics Applications	51	mean	62.45	64.57	64.57
		stdev	16.37	19.73	19.73
Mathematics Specialist	34	mean	50.00	42.17	42.17
		stdev	17.40	20.43	20.43
Mathematics Methods	94	mean	55.07	52.45	52.45
		stdev	19.97	25.36	25.36
Physics	48	mean	54.77	39.56	39.62
		stdev	17.51	21.79	21.68
Psychology	24	mean	62.58	54.95	54.95
		stdev	13.37	19.15	19.15