

# TISC

TERTIARY  
INSTITUTIONS  
SERVICE  
CENTRE

WESTERN AUSTRALIA

# ANNUAL REPORT

JULY 2015 – JUNE 2016



**Tertiary Institutions Service Centre Inc**

*Address for all correspondence:*

**Level 1, 100 Royal Street  
EAST PERTH WA 6004**

*Office Location:*

**First Floor  
100 Royal Street  
EAST PERTH WA 6004**

*Telephone: (08) 9318 8000*

*Facsimile: (08) 9225 7050*

**[www.tisc.edu.au](http://www.tisc.edu.au)**

Thirty-seventh Annual Report  
Prepared and printed by TISC staff  
October 2016  
TISC Inc WA  
TISC is a registered trade mark

## FOREWORD

---

It is with much pleasure that we present the Thirty-Seventh Annual Report of the Tertiary Institutions Service Centre (TISC).

This report contains information about the various functions of the Centre and its operational structure, together with financial reports and statistical information on the 2015/2016 applications process. The TISC Management Committee considers this will enable readers to appreciate and understand the wide range of activities in which TISC is currently engaged. The detailed statistical tables relating to 2015 WA Year 12 results and 2016 applications, offer and enrolment information have not been published in hardcopy. This information is available at [www.tisc.edu.au](http://www.tisc.edu.au).

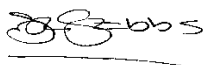
After the 'half-year cohort' of Year 12 students in 2014, overall application numbers rebounded to levels similar to those in 2013. TISC received a total of 18,366 undergraduate university applications, representing an increase of 31% on the previous year, and comparable to the 18,622 received in 2013. WA Year 12 applicants increased by 55.6% while Other applicants decreased by 3%. With a larger pool of applicants, the number of offers made also increased, to 16,465, a 35% rise from the previous year. In the 2014/2015 STAT year, the number of STAT candidates decreased slightly, with 1,679 attending STAT compared to 1,720 the previous year. The overall number of WAUFP students enrolled in 2015 declined slightly, with 140 in the standard program (compared to 145 in 2014), 11 in the Fast Track program (compared to 9) and 16 (compared to 20) undertaking the Mid-Year Entry program.

A range of publications and documents were produced by TISC for WA Year 12 students. The *2016 TISC Guide* was distributed free to current WA school leavers, together with a personalised letter instructing them how to apply through TISC and information about the release of their results. TISC also provided presentations at metropolitan and country schools on the ATAR, requirements for university entry, preference and offer systems. A revised PowerPoint presentation aimed at Year 12 students, parents and teachers was made available on the website. The Universities Admission Advice Letter (UAAL), which includes scaled scores, ATARs (if applicable) and university eligibility information, was available online as a pdf to all WA students with at least one scaled score, including those not in Year 12. As in previous years, students could order and pay for hard copy(ies) of the UAAL on official TISC stationery, if desired. To inform students how their scaled scores are derived, a raw to scaled score report for each student was also made available online.

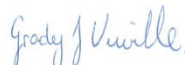
TISC undertook significant IT projects and upgrades again this year to ensure continued reliability and stability of systems and to enhance services provided to member institutions and applicants. TISC programming allowed the automatic assessment of applicants' eligibility for three new alternative entry/bonus point schemes introduced by member institutions, based on criteria such as subject combinations, non-ATAR results and a range of demographic details including socioeconomic status. An extensive program of work was undertaken to streamline and automate a number of legacy programs and processes, including data import, export and rollover, manual and ad-hoc offer generation processes, data collation and integrity checking. This work will provide a solid foundation for future enhancements. A major project to upgrade infrastructure supporting the TISOnline application suite was successfully completed, with no disruption to ongoing business, deploying new servers and updated software, including high-performance data mirroring onsite and scheduled log-shipment to the offsite disaster recovery servers. Preparatory work on a new website design and preparation for a significant Oracle database upgrade will come to fruition in the coming year.

The second half of 2015 saw the retirements of two long-standing TISC staff: Mr Steve Hoath had provided eighteen years of service to TISC as Executive Officer; while Mrs Judy Cresp entered retirement after twenty one years of service, most of them as Deputy Executive Officer. University and TISC staff, together with members of the Management Committee, thank Steve and Judy for their diligent service over a long period.

On behalf of the TISC Management Committee, we express appreciation for the high levels of commitment, efficiency and diligence shown by the Centre's staff. Finally we also wish to thank members of the Management Committee and the various committees of TISC for their co-operation and support.



Mr Jon Stubbs  
Chair TISC Management Committee  
(1 July 2015 to 31 March 2016)



Prof. Grady Venville  
Chair TISC Management Committee  
(1 April 2016 to 30 June 2016)

# CONTENTS

---

	Page
<b>Foreword</b>	i
<b>The Tertiary Institutions Service Centre Inc</b>	
Objects of the Tertiary Institutions Service Centre Inc	1
Major Activities of the Centre	1
Member Institutions	1
Associate Member Institutions	1
<b>Committees</b>	
Management Committee	2
Applications Committee	2
Scaling Policy Committee	2
Joint SCSA/TISC Scaling Implementation Committee	2
Joint Working Group on Tertiary Admission	2
<b>Centre Administration</b>	
Staff	3
Staff Development/Activities	4
External Representation	4
Accommodation	4
Funding	4
<b>Initiatives and Developments</b>	
General Developments	5
IT Developments	5
IT Systems Upgrade	7
Customer Service	7
School Curriculum and Standards Authority Liaison	8
State Training Provider (TAFE) Liaison	9
Interstate Liaison	9
Australian Law Schools Entrance Test	9
National Data Collection of Applications and Offers	9
Australasian Conference of Tertiary Admissions Centres (ACTAC)	9
<b>Applications Statistics - 2016 Intake</b>	
Applications	10
Preferences, Offers and Enrolments	10
Changes of Preference	12
WA Year 12 Population	13
Applicants with Interstate Year 12	13
Other Applicants	14
Flow Pattern of Non-WA Year 12 Applications	15
Applications and Offers Statistics 1977-2015 (Graph)	16
<b>Website Statistics</b>	
2015/2016 Summary	17
Monthly Report	20
University Applications	21
WA Year 12 Results and ATARs	23
University Offers	24
WAUFP Results	25
UAAL Hardcopy Orders	25
TISCOOnline Static Content Search	25
Browser Compatibility	25
Mobile Devices Compatibility	25
Web Referrals	29
Email Subscription Service Updates	28

	<b>Page</b>
<b>Special Tertiary Admissions Test (STAT)</b>	
STAT Enrolments	29
STAT Scores	29
Testing Sessions in the Metropolitan Area	30
Scheduled Testing Sessions in Regional Areas	30
Scheduled Testing Sessions in Prisons	31
Special Use of STAT	31
STAT National Database	32
Changes That Occurred in 2015	32
<b>Western Australian Universities' Foundation Program (WAUFP)</b>	
Provider Colleges and Student Numbers	33
Student Subject Enrolments	33
Nationality Group	34
Setters, Checkers and Markers	35
Special Tertiary Admissions Test (STAT)	35
Final Examinations	35
Evaluation of the Examination Papers	36
Subject Moderation	36
Scaling	36
Notification of Results	36
Relationship between ELACS Results and the CPS	37
Certificates of Achievement and Letters of Congratulations	38
Future Changes	38
<b>School Visits</b>	39
<b>Schedule of Dates</b>	40
<b>TISC Publications</b>	41
<b>Schedule of Fees and Charges</b>	42
<b>List of Appendices</b>	
A – Customer Service Statistics	45
B – Western Australian Universities' Foundation Program Statistics	49

**Note:** Detailed statistics on applications, offer and enrolments by course within a university for Undergraduate courses are on [www.tisc.edu.au](http://www.tisc.edu.au) (see Publications, Reports and Statistics).



# **TERTIARY INSTITUTIONS SERVICE CENTRE (INC)**

---

The organisation known as the Tertiary Institutions Service Centre (TISC) was established on 10 December 1975 by an agreement of the participating tertiary institutions. A new constitution was subsequently drawn up in June 1984 to establish the Tertiary Institutions Service Centre (Incorporated) (TISC Inc) under the Associations Incorporations Act 1895-1982. The constitution was revised in April 1995, and again in June 2001.

Under the terms of the TISC Constitution a Management Committee consisting of representatives from the participating universities was appointed to act on behalf of the universities and to be responsible for the activities of the Centre.

## **OBJECTS OF THE TERTIARY INSTITUTIONS SERVICE CENTRE INC**

The objects of the Centre are as follows:

- (i) to process the applications for admissions to the Institutions;
- (ii) to enhance and facilitate interest and participation in higher education in the state of Western Australia;
- (iii) to do all such acts, matters and things and carry out such other functions as the Committee deems desirable to further the objects of the Centre and the common interests of the Institutions.

## **MAJOR ACTIVITIES OF THE CENTRE**

- (i) Processing of all applications for admission to the participating member universities for undergraduate programs of study (including those with graduate entry) and other courses as agreed from time to time;
- (ii) Conduct of specially designed tests such as the Special Tertiary Admissions Test (STAT);
- (iii) Administration of the Western Australian Universities Foundation Program (WAUFP);
- (iv) Publication of information in relation to admission in Western Australian public universities.

## **MEMBER INSTITUTIONS**

Curtin University  
Edith Cowan University  
Murdoch University  
The University of Western Australia

## **ASSOCIATE MEMBER INSTITUTIONS**

CQUniversity Australia  
North Metropolitan TAFE  
Tabor College of Higher Education

# COMMITTEES

---

## MANAGEMENT COMMITTEE

The Management Committee is responsible for overseeing the operations of the Centre. This committee comprises two representatives from each member university. The Secretary to the committee is a representative from the Tertiary Institutions Service Centre.

The Constitution and Rules of the Centre provide for the Chair of this committee to be rotated between the member universities and that the Chairperson should not be appointed for more than two years.

**Meeting Dates: 9 October 2015, 4 December 2015, 18 March 2016 and 3 June 2016**

## APPLICATIONS COMMITTEE

The Applications Committee is a forum for university Admissions Officers and TISC staff to discuss issues concerning the applications process. This Committee reports to the Management Committee.

**Meeting Dates: 31 July 2015, 6 November 2015 and 11 March 2016**

## SCALING POLICY COMMITTEE

The Joint School Curriculum and Standards Authority (SCSA)/TISC Scaling Policy Committee reviews and determines scaling policy and procedures for WACE courses. The committee reports to the SCSA and TISC Management Committee.

**Meeting Dates: 23 September 2015, 2 March 2016, 22 March 2016**

## JOINT SCSA/TISC SCALING IMPLEMENTATION COMMITTEE

The Joint School Curriculum and Standards Authority (SCSA)/TISC Scaling Implementation Committee, which is attended by TISC, SCSA and university representatives, is held annually. At this session, the Scaling Report was presented along with proposed scaling points for small candidature language subjects. The Committee confirms the scaling outcomes which are circulated to SCSA and the TISC Management Committee.

**Meeting Dates: 13 December 2015, 16 December 2015**

## JOINT WORKING GROUP ON TERTIARY ADMISSION

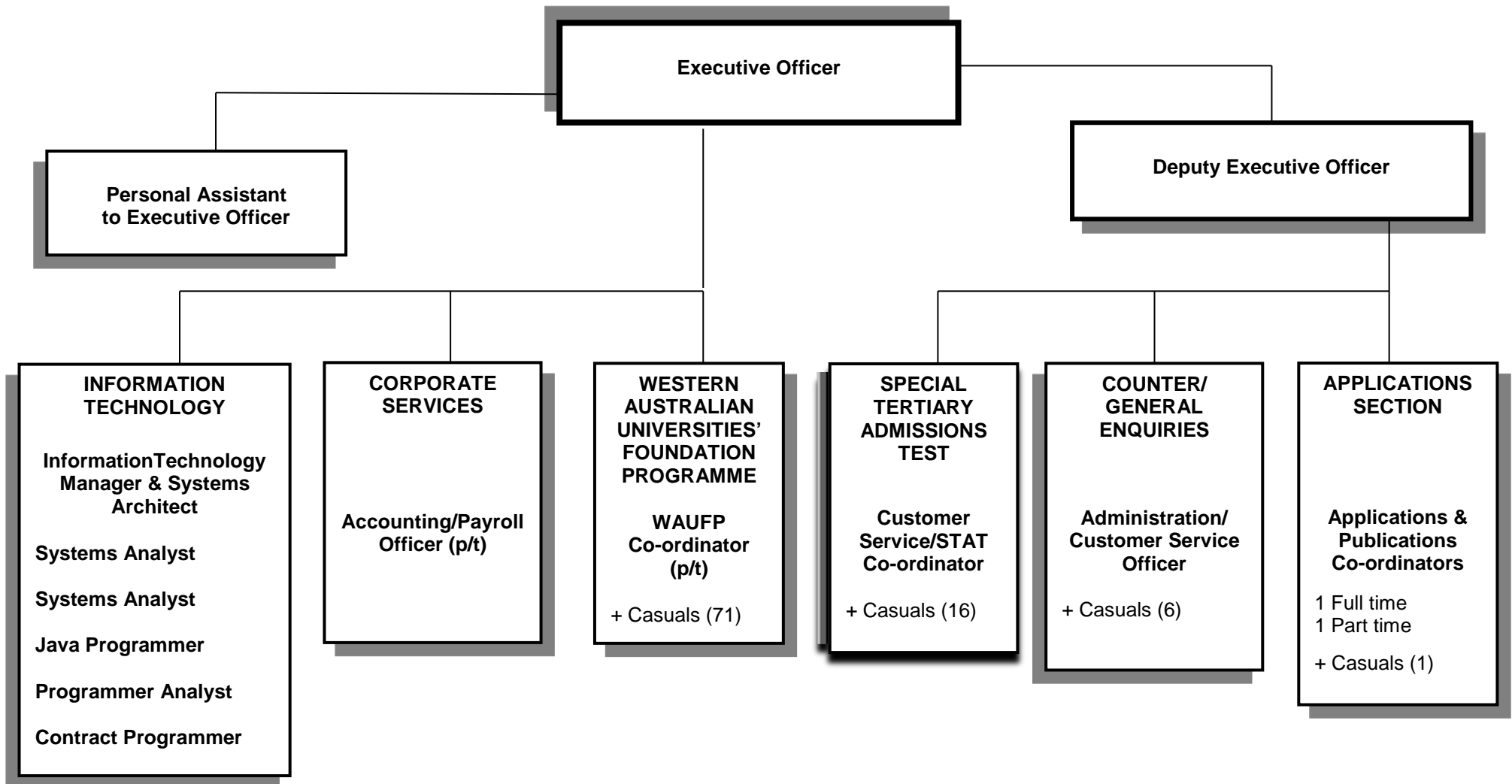
The Joint Working Group on Tertiary Admission is a forum for the universities and TISC to discuss common issues that relate to TISC and/or admission policy issues. This committee reports to the Management Committee. The position of Chair is rotated between the universities at each meeting.

No meetings were held in this reporting period.



# CENTRE ADMINISTRATION

## TISC STAFFING STRUCTURE



## **STAFF DEVELOPMENT/ACTIVITIES**

Mr S Hoath and Ms J Cresp were members of the Association for Tertiary Education Management (ATEM). All members of the IT section, ie Mr Terry Bhatti, Mr Leo He, Mr Mauro Vennitti, Mr Greg Zablocki and Mr Rodney Paul, are members of the Oracle Users Group.

All administrative staff attended a planning day in Perth in April 2016.

## **EXTERNAL REPRESENTATION**

TISC is a member of the Australasian Conference of Tertiary Admission Centres (ACTAC). Deputy Executive Officer, Ms A Williams is a member of the School Curriculum and Standards Authority Sickness and Misadventure Committee. Ms Williams is also a member of the ACTAC Year 12 Results Equivalence Group (REG).

## **ACCOMMODATION**

TISC is located at Level 1, 100 Royal Street, East Perth and occupies two floors of commercial building office space totalling 540sqm.

Limited parking is available for staff at the basement level of the building. TISC is however located close to public transport and parking.

The five (5) year lease is operable until April 2019.

## **FUNDING**

TISC is a non-profit organisation that is funded by fees charged for its services. The universities pay a contribution fee for the services they receive from TISC.

A net contribution was charged to the member universities for the period 1 July 2015 to 30 June 2016, which included a set fee for each direct entry applicant.

Each university pays a fixed component, plus a pro-rata component based on the number of student enrolments that were, or should have been, processed through the TISC joint system.

# INITIATIVES & DEVELOPMENTS

---

## GENERAL DEVELOPMENTS

After the disruption of the 2014 'half-year' cohort, 2015/2016 application numbers rebounded to be comparable to pre-2014 levels. The decline in the number of applications from other than WA Year 12 students, which has been observed over a number of years, eased slightly, offering hope that these numbers may stabilise further in future.

The loss of a number of senior, long-serving staff from TISC in 2015 has placed considerable additional pressure on remaining personnel. Despite the challenges, TISC staff have maintained excellent levels of service continuity and innovation to member institutions.

During the year, North Metropolitan TAFE (formerly Central Institute of Technology), renewed its Associate Membership of TISC, and was joined by CQUniversity, which is opening a campus in the Perth CBD in 2017, and Tabor College of Higher Education.

The Australian National University, whose application for membership had been declined on the grounds of not having a campus in WA, lodged a complaint about TISC and the equivalent body in South Australia, SATAC, to the Australian Competition and Consumer Commission (ACCC). TISC has cooperated fully with the ACCC's investigation, and looks forward to receiving the findings in due course.

TISC, alongside other state-based Tertiary Admissions Centres, was involved in several discussions with the Australian government's Higher Education Standards Panel's consultation on Transparency in Tertiary Admissions.

The Western Australian Universities' Foundation Program (WAUFP) was offered offshore for the first time, at the Experimental School attached to Nanjing Normal University, under an agreement with the WA Education Group.

A project to revamp the TISC website was commissioned, and work proceeds in implementing a new look and feel for the site.

## IT DEVELOPMENTS

TISC programs several university specific pathway and bonus schemes for member universities. This year three new schemes were introduced which involved significant new programming and modifications to existing processes.

Curtin introduced a Portfolio Entry scheme for entry to particular Curtin courses. TISC implementation of the scheme covered eligibility assessment of WA Year 12 (WACE) domestic students. The solution provided evaluates suitability based on specified levels of achievements in WACE, the grade average in required subject combinations from current and past attempts, the ATAR range, English literacy and socioeconomic conditions based on the school attended by the students. Students identified by the TISC process are subsequently assessed by Curtin, on the strength of their submitted portfolio, to identify those suitable for inclusion in the automated offers generation program. To facilitate the assessment process by university staff, a criteria-driven Discoverer report was also implemented to present a comprehensive set of students' WACE and application data in a flat view.

ECU introduced an Engineering and Law Bonus scheme. This scheme is also open to eligible current WA Year 12 domestic students. Eligibility is calculated based on the prerequisites for applicable course preferences, ATAR range from current or past attempts, indigenous status, low-socioeconomic background based on school attended and English competency requirements. Qualifying students get a bonus of up to 5 points added to their ECU rank with a ceiling set for engineering or law courses.

Murdoch directed the OnTrack scheme through TISC. This program applies to certain Murdoch courses only and is open to qualifying WACE and non-WACE domestic students. Eligibility is calculated based on a number of criteria such as WACE results, student age, English competency, STAT outcome, socioeconomic criteria, ATAR range and entry rank limitation. TISC programming identifies those who qualify outright based on current WACE or STAT results and those who need further assessment by Murdoch staff before being eligible for automated offer generation.

Of the existing schemes, Murdoch RISE was modified to extend eligibility to current and past mature age WACE/TEE students and the minimum ATAR to which the bonus could be applied was raised.

The UWA's Broadway scheme was extended to uniquely identify students with a comparatively higher Broadway selection rank.

The implementation of these schemes also required significant changes to existing interdependent and auxiliary programs. This includes the Past WA Results Collection system (PRC) to evaluate past eligibilities and carry them over to current applications, STAT Aggregation / IELTS / Interstate-Year-12 to calculate English literacy, COSA Aggregation to evaluate and set eligibilities based on current WACE achievements and English literacy indicators, UAAL generation program for WACE achievements as well as literacy related notifications and the Offer generation program to handle new eligibility values for Main and Second round offers.

The new WACE course structure, to be examined for the first time in 2016, prompted changes to a number of TISC processes which utilise student enrolments and results data. The affected processes include core programs, Crystal Reports and QTISC screens. Some of this work has been completed and further changes are progressing to prepare for end of year processing in 2016.

Each year the WA Year 12 results scaling process undergoes detailed integrity testing which takes place in a parallel database environment. To streamline this process a number of inter-database data comparison processes were written to perform some of the checks electronically. Further enhancements are in pipeline for the 2016 scaling cycle.

Like many other institutions, over the years, TISC has accumulated a number of legacy standalone backend programs, most of which require manual interaction. This year the TISC IT team initiated a work stream of enhancing, rewriting and converting such programs into an integrated and automated environment with significant progress made to date:

- The SCSA data (Year 11&12) import process which runs throughout the processing year for an incremental updates of TISC database was re-written. The new process less than halves interruption time to the main QTISC database system during its operation and it integrates with the history database for record matching via Java RMI API to enable further full automation.
- The team programmed and automated several data import and yearly rollover processes. These include Scheme Schools which include WA and some interstate schools linked to various schemes offered by member universities; Interstate Subjects for use in course prerequisites calculations; Grading Equivalent Table (GET/GSM) for use in ARTS returns grade identification; and STAT results issued by ACER now automatically uploaded to TISC server and imported into the National STAT Database which is used by authorised organisations for results retrieval.
- In addition, the team automated a number of data export processes for use by external member and non-member organisations. These processes include application reference data tables; admission application & statistical data reports in required formats and automated upload to remote destinations where applicable.
- An enhanced Offers generation process aims to reduce turnaround time to a bare minimum for generating manual and ad-hoc offers on the advice of universities. Adoption of a standardised offer outcome/returns format and improved offers outcome/returns handling allows for automated update of the TISC database.
- Automated monitoring & alerting processes were introduced to track the flow of requests and results between TISC and member universities, and enable timely follow up on delayed processing.
- New Crystal Reports were designed to extract and assemble ready to use data for several sections of the TISC Annual Report; which in the past required manually collating data from different sources.

The primary Oracle database was extended to incorporate varies global and university specific application assessment status indicators and values, including preference eligibilities, literacy indicators, admission categories and preference ranks. This enabled enhancements to QTISC for context-sensitive help and integrated data validation for the application processing components. The

data set is further being utilised to implement dynamic shared usage by backend admissibility assessment programs.

The QAS Batch Pro address validation process in place for several years was discontinued as all application addresses are now validated in real-time via TISCOOnline.

A project was commenced to upgrade the TISCOOnline public website's interface to a more modern look and feel. It was planned for commissioning before the start of the 2016 application process year. However, the project was put on hold due to change in priorities resulting from the early start to application processing cycle. The project has now been resumed and is progressing for release during the next processing cycle.

## **IT SYSTEMS UPGRADE**

A major project was undertaken to upgrade TISCOOnline application suite that comprises of four systems providing a solution for public, intranet, extranet and intersystem data synchronisation needs. TISCOOnline utilises JBoss Middleware and SQL Server technologies which are set up to provide a high-availability solution. New servers were set up in a parallel environment and commissioned in several stages to minimise interruption to the public and to maintain continuity of the business processes. The upgrade involved hardware infrastructure, complete software stack, database tier and deployed applications as below:

- New application and database servers' hardware was commissioned with a current release of OS. JBoss Enterprise Application Platform (EAP) was upgraded to an up-to-date supported release; front-end web server upgraded to a current release deploying new load-balancer component and JBoss Middleware Framework components were also upgrade to match the compatibility matrix.
- TISCOOnline utilises SQL Server RDBMS which was upgraded to a 2014 version with real-time high-performance data mirroring to a standby server at the primary site and scheduled log-shipment to the disaster recovery site.
- The TISCOOnline application suite also underwent programming changes for compatibility with the new environment.

An upgrade to Oracle database version 12c is currently in preparation. To make the migration process smooth, a compatibility test was conducted for major applications including QTISC, Reports, and Oracle BI product.

A number of other advancements were also accomplished, some of which include VMware vCentre Server & VMware host OS upgrade to a later version; Firewalls OS upgrade; Cisco IPSec VPN replacement with Cisco AnyConnect; renewal and upgradation of servers security certificates to a wildcard certificate on all servers in both primary and secondary sites.

A new developer, with particular skills in Oracle development, joined the IT team.

## **CUSTOMER SERVICE**

During the 2015/2016 processing period, Customer Service experienced an increased level of activity with telephone and counter enquiries compared to the previous year.

This year, the total number of counter enquiries from customers was 2,971, telephone enquiries were 9,304, and emails 4,262. This represented an increase in counter, email and telephone enquiries.

### **Staffing**

Two new Customer Service Officers (CSO) joined our four experienced officers in July 2015 to make up the team of 6 casual officers, with 2 casual staff members being rostered each day. During September, November, and January the CSOs were rostered more frequently than one day per week due to the increasing work load during these months.

Two training sessions were held in August 2015. During the sessions our CSOs are given comprehensive information to answer enquiries from our customers. Our CSOs are knowledgeable, responsive, and have delivered excellent service to our customers over the past year.

## **Emails**

We received 4,262 email enquiries this year compared to 4,163 in the previous year. This is an increase of 2.3%. The busiest month was September, with 1,028 emails (24.1% of all emails received during July to February).

The acceptance of emailed STAT Booking Forms and Requests for Record of Results again proved popular. TISC began accepting emailed booking forms and Record of Results requests in 2013. We received 475 (403) Record of Results requests and 818 (659) STAT Booking Forms. We also received 186 (112) emails with university application supporting documentation, although the email accounts set up to receive STAT Booking Forms and Results Requests were not intended to be used for this purpose.

## **Telephone**

Customer Service answered 9,304 (8,494) telephone enquiries from July 2015 to February 2016. This is an increase of 8.7%. The busiest month was January 2016 with 2,424 (1,632) enquiries (26.1% of all calls answered during the busy period) followed by September 2015 with 1,524 enquiries (16.4% of enquiries answered).

Enquiries about admission requirements increased by 20.1% (from 490 to 614); enquiries about registration/login increased 28.3% (from 287 to 400); and enquiries for past results increased by 33.8% (from 219 to 331). There was also a big increase in the number of enquiries about offers 49.6% (from 315 to 625), UAAL 55.1% (from 71 to 158), and general information 62.5% (from 272 to 726).

## **Counter**

Counter activity increased from 2,764 customers the previous year to 2,971 customers this year. This is an increase of 7.5%. The majority of our customers were handing in supporting documentation for their university applications and STAT bookings in December/January.

The tables in Appendix A summarise the nature of the telephone, counter and email enquiries received by Customer Service during the eight-month busy period.

## **SCHOOL CURRICULUM AND STANDARDS AUTHORITY LIAISON**

Year 12 results and ATARs for 2015 were released on schedule, with TISC and SCSA staff again working to tight deadlines. TISC and SCSA are currently working through the various procedural changes required to facilitate release of results before Christmas, with a view to implementing this from 2017 onwards.

The Joint SCSA/TISC Scaling Policy Committee met on 23 September 2015, 2 March 2016 and 22 March 2016. Discussions took place on scaling, standardisation and mathematics incentives. Both SCSA and TISC had worked on reviewing scaling processes and alternative scaling methodologies, as previously endorsed by the Committee. 2016 results would be scaled using the current Average Marks Scaling methodology, but possible alternative approaches would be analysed, using 2016 data, before a decision is made on future approaches.

SCSA had advised WACE results would not be standardised from 2016. Combined marks would be composed of raw exam marks and moderated school assessment. As the Average Marks Scaling process requires input to be standardised, SCSA agreed to carry out this process on combined marks and forward the results to TISC. Scaling would continue to be a joint SCSA/TISC exercise.

Feedback had been sought from the member universities on the provision of incentives to encourage students to take higher-level mathematics, with a decision made to introduce a mathematics bonus,

similar to the current LOTE bonus, for 2017 Year 12 students, and a further decision made to introduce unacceptable combinations for some mathematics courses for 2018 students.

TISC and SCSA have worked closely on all issues of common interest, with strong co-operation between the two institutions to achieve the best results for WA students.

## **STATE TRAINING PROVIDER (TAFE) LIAISON**

The table below shows the number and percentage of applicants for whom TISC collected current WA State Training Provider (TAFE) results and completion information.

	2016	2015	2014
<i>Applicants</i>	366	365	459
<i>Requests</i>	378	383	481
<i>% of all Other applicants</i>	6.4%	6.1%	6.8%
<i>% of all applicants</i>	2.0%	2.6%	2.5%

The number of WA State Training Provider collections was very similar to 2015, with the total number of requests decreasing by 1.3%.

## **INTERSTATE LIAISON**

### **Certification of Documents**

TISC continues to certify documents for applicants to submit to interstate admission centres. A small fee is charged. Other interstate centres reciprocate this service for TISC applicants.

## **AUSTRALIAN LAW SCHOOLS ENTRANCE TEST**

During October, TISC continues to hold one Australian Law Schools Entrance Test (ALSET) session on behalf of VTAC, for students who apply for admission to the law course at Deakin University. This session is usually run concurrently with a STAT session at Canning College. TISC charges an additional fee to each applicant to cover the cost of running the session.

## **NATIONAL DATA COLLECTION OF APPLICATIONS AND OFFERS**

TISC again participated in the federal government's national data collection of applications and offers for undergraduate university places for which applications are made through Tertiary Admission Centres (TACs). Data was transferred to the federal Department of Education and Training on five occasions from October 2015 to May 2016, on dates negotiated between ACTAC and the Department.

## **AUSTRALASIAN CONFERENCE OF TERTIARY ADMISSION CENTRES (ACTAC)**

Officers of each of the state's Tertiary Admission Centres meet twice a year to discuss common issues such as web development, customer services, etc and to confirm joint arrangements such as the Special Tertiary Admissions Test and Automated Results Transfer System (ARTS). The Executive Officer and Deputy Executive Officer attended meetings in October 2015 and April 2016.

## APPLICATION STATISTICS - 2016 INTAKE

### APPLICATIONS

For 2016 admission, a total of 18,336 applications were processed (12,592 from WA Year 12 students) There was an overall increase of 30.7% in the number of applicants compared with last year (as against decreases of 24.7% in 2014/2015 and 4.2% in 2013/2014). Numbers of WA Year 12 applicants increased by 55.7% (as compared with a decrease of 31.6% in 2014/2015 and an increase of 0.6% in 2013/2014). Numbers of Other applicants decreased by 3.3% compared with last year, following decreases of 12.6% in 2014/2015.

**Table A: Main Round and Total Applications, 2014-2016**

	2016		2015		2014		% Change		
	Main Round	Total	Main Round	Total	Main Round	Total	2015-2016	2014-2015	2013-2014
WA Year 12*	12,512	12,592	8,057	8,088	11,780	11,829	+55.7%	-31.6%	+0.6%
Other (incl current IS Yr 12)	5,313	5,744 (551)	5,504	5,940 (607)	6,354	6,793 (578)	-3.3% (-9.2%)	-12.6% (+5.0%)	-11.6% (-13.0%)
<b>TOTAL</b>	<b>17,825</b>	<b>18,336</b>	<b>13,561</b>	<b>14,028</b>	<b>18,134</b>	<b>18,622</b>	<b>+30.7%</b>	<b>-24.7%</b>	<b>-4.2%</b>
% of all WA Yr 12 students who applied to university		50.7%		48.2%		50.6%			

\*Note 'half-year cohort' effect in 2015.

### PREFERENCES, OFFERS AND ENROLMENTS

The joint admissions procedure offers applicants the choice of submitting up to six preferences. Table B shows that over 30% of all applicants made use of all six preferences.

**Table B: Applications by Preference, 2014-2016\*\***

Applications (% of all apps)	Preference					
	First	Second	Third	Fourth	Fifth	Sixth
<b>2016</b>	18,336 (100%)	15,433 (84.2%)	13,367 (72.9%)	11,175 (60.9%)	8,721 (47.6%)	6,407 (34.9%)
<b>2015</b>	14,028 (100%)	11,270 (80.3%)	9,555 (68.1%)	7,823 (55.8%)	5,976 (42.6%)	4,387 (31.3%)
<b>2014</b>	18,621 (100%)	15,612 (83.8%)	13,465 (72.3%)	11,101 (59.6%)	8,654 (46.5%)	6,337 (34.0%)

Table C below shows a 34.7% increase in total enrolments (this figure includes deferrals) from 2014 to 2016. Due to the half year cohort in 2015, all universities had experienced decreased first and total preferences as well as total offers, so the increases this year reflect a return to "normal" statistics.



**Table C: Preferences, Offers & Enrolments (Including Deferrals) by Institution, 2014-2016\*\***

	Year	Total Preferences	First Preferences	Total Offers	Enrolments*	
					Total	% of offers
<b>Curtin</b>	2016	32,532	8,345	7,590	6,482	85.4
	2015	23,324	6,455	5,788	4,920	85.0
	2014	29,434	8,355	7,556	6,596	87.3
<b>ECU</b>	2016	12,483	2,169	2,285	1,770	77.5
	2015	9,084	1,535	1,706	1,314	77.0
	2014	14,503	2,497	2,679	2,151	80.3
<b>Murdoch</b>	2016	14,877	3,155	2,808	2,225	79.2
	2015	9,635	2,103	1,765	1,515	85.8
	2014	13,142	2,531	2,103	1,809	86.0
<b>UWA</b>	2016	13,546	4,666	3,789	3,235	85.4
	2015	10,996	3,935	2,997	2,580	86.1
	2014	14,173	5,238	4,206	3,803	90.4
<b>TOTAL</b>	2016	73,438	18,335	16,472	13,909	84.4
	2015	53,039	14,028	12,256	10,329	84.3
	2014	73,790	18,621	16,544	14,359	86.8

\*Includes deferrals.

\*\*Please refer to 'Final application, offer and enrolment data for 2016 admissions' on [www.tisc.edu.au](http://www.tisc.edu.au) under 'Application and Offer Statistics – 2015/2016' for full institutional details.

Table D below shows that the percentage of enrolments from first preference offers in 2016 was higher for Curtin and ECU, lower for Murdoch University and the same for UWA.

**Table D: First Preference Enrolments\* as % of First Preference Offers, 2014-2016**

	2016	2015	2014
<b>Curtin</b>	88.7	88.1	89.8
<b>ECU</b>	83.4	83.0	84.8
<b>Murdoch</b>	89.3	90.2	89.6
<b>UWA</b>	87.8	87.8	92.0

\*Includes deferrals

The universities made 16,465 offers over the two rounds, with 78.0% of all applicants who were made an offer receiving their first preference. Offers were made to 11,815 WA Year 12 students, or 93.8% of all WA Year 12 applicants. The total number of applicants increased by 30.7% compared with that for last year, and decreased 1.5% compared with the year before. The number of offers made increased by 34.4% compared with last year, and decreased by 0.4% compared with the 2014 admission year. The number of offers to interstate Year 12 applicants was 279 compared with 293 last year, representing a slight decrease of 4.8%.

**Table E: Main Round, New Second Round and Total Offers, 2014-2016**

This table compares offers made over the past three admissions periods.

(Note: The table below is as at 3 February 2016 and does not include all post-second round manual offers)

N° Receiving an Offer	2016			2015			2014			% Change	
	Main Round	New 2 <sup>nd</sup> Round	Total*	Main Round	New 2 <sup>nd</sup> Round	Total*	Main Round	New 2 <sup>nd</sup> Round	Total*	2015-2016	2014-2015
WA Year 12**	11,610	966	11,815	7,305	569	7,473	10,857	927	11,033	+58.1%	-32.3%
Other (Incl. Current I/S Year 12)	4,130	620	4,650 (279)	4,255	634	4,780 (293)	4,981	679	5,498 (290)	-2.7% (-4.8%)	-13.1% (+1.0%)
<b>TOTAL</b>	<b>15,740</b>	<b>1,586</b>	<b>16,465</b>	<b>11,560</b>	<b>1,203</b>	<b>12,253</b>	<b>15,838</b>	<b>1,606</b>	<b>16,531</b>	<b>+34.4%</b>	<b>-25.9%</b>
% Receiving an Offer	Main Round	New 2 <sup>nd</sup> Round	Total*	Main Round	New 2 <sup>nd</sup> Round	Total*	Main Round	New 2 <sup>nd</sup> Round	Total*		
% of All Applicants	88.3%		89.8%	85.3%		87.3%	87.3%		88.8%		
% of WA Year 12 Applicants	92.8%		93.8%	90.7%		92.4%	92.2%		93.3%		
% of 1 <sup>st</sup> Preference Offers	76.3%		78.0%	77.0%		77.8%	77.7%		79.3%		

\*\*Note: double counting of main round offer and replacement new second round offer to the same person has been removed from this total.

\*\*Note 'half-year cohort' effect.

## CHANGES OF PREFERENCE

Applicants were required to change preferences online, with TISC staff making manual changes to correct errors and for other reasons. In total, 13,693 changes of preferences were made (an increase of 49.5% compared with the previous year, after the decrease of 35.9% last year). There was a 0.4% increase compared with the 2013/2014 admissions year.

**Table F: Changes of Preference, 2014-2016**

The table below shows the number of preference changes.

	2016		2015	2014	% Change		
	to 30/12*	Total	Total**	Total	2015-2016	2014-2015	2013-2014
Online	6,955	13,237	8,803	13,123	+50.4%	-32.9%	-0.8%
TISC	226	456	355	518	+28.5%	-31.5%	-50.9%
<b>TOTAL</b>	<b>7,181</b>	<b>13,693</b>	<b>9,158</b>	<b>13,641</b>	<b>+49.5%</b>	<b>-35.9%</b>	<b>-4.5%</b>

\*Note: Release of WACE results

\*\*Note 'half-year cohort' effect.

The 'TISC' category covers manual changes by TISC staff and reflects not only correction of re-enrolment and category errors, but also any deletion of preferences due to the withdrawal of courses during the admission period. There was an increase of 28.5% in manual changes overall, with the increase in Year 12 applicants. The increase in course amendments from the universities compared with the previous year (77 preference changes compared with 42 preference changes in 2015 and 65 in 2014) also contributed to the increase.

## WA YEAR 12 POPULATION

The percentage of all Year 12 students (including mature age) applying for university for admission in 2016 increased slightly. The percentage offered a place in 2016 who accepted their offer either by enrolling or deferring decreased slightly.

**Table G: WA Year 12 Population (Including Mature Age and Overseas), 2013-2015 Admissions**

	<b>Total</b>	<b>Applications</b> (% of Year 12)		<b>Offers</b> (% of Applications)		<b>Enrolments*</b> (% of Offers)	
<b>2016</b>	24,819	12,592	(50.7)	11,817	(93.8)	9,995	(84.6)
<b>2015</b>	16,837	8,088	(48.0)	7,473	(92.4)	6,400	(85.6)
<b>2014</b>	24,273	11,828	(48.7)	11,037	(93.3)	9,840	(89.2)

\*Includes deferrals

The median ATAR of Year 12 students who applied for university entry was 84.45, the median ATAR for Year 12 applicants who received an offer was 85.50, and the median ATAR for those who actually enrolled was 86.25.

The most popular courses studied by school leaver Year 12 students who received an ATAR were Mathematics (89.8%), English (83.7%), Chemistry (32.9%) and Human Biological Science (32.8%). The most common four course ATAR combination was Chemistry, Mathematics: Specialist, Mathematics and Physics (3.6% of candidates used this combination).

## APPLICANTS WITH INTERSTATE YEAR 12

Table H shows the number of applications and offers and subsequent enrolments, deferrals and lapses for interstate applicants. The number of offers to current year Interstate Year 12s was 279 compared with 314 last year, representing a decrease of 11.1%. Enrolments as a percentage of offers for all applicants with interstate school results remained below 50%.

**Table H: 2015 Applicants with Interstate School Leaving Qualifications (All Years & Current Year 12)**

		<b>TOTAL</b>	<b>ACT</b>	<b>NSW</b>	<b>NT</b>	<b>QLD</b>	<b>SA</b>	<b>TAS</b>	<b>VIC</b>
<i>Applications</i>	<i>All Yrs</i>	1,081	39	295	90	170	130	53	304
	<i>Current Yr 12</i>	551	17	169	66	73	72	21	133
<i>Offers</i>	<i>All Yrs</i>	645	25	155	73	111	75	37	169
	<i>Current Yr 12</i>	279	10	64	52	44	36	14	59
<i>Offers as % of applications</i>	<i>All Yrs</i>	59.7	64.1	52.5	81.1	65.3	57.7	69.8	55.6
	<i>Current Yr 12</i>	50.6	58.8	37.9	78.8	60.3	50.0	66.7	44.4
<i>Enrolments</i>	<i>All Yrs</i>	297	10	72	36	62	30	13	74
	<i>Current Yr 12</i>	63	1	15	18	10	4	4	11
<i>Enrolments as % of offers</i>	<i>All Yrs</i>	46.0	40.0	46.5	49.3	55.9	40.0	35.1	43.8
	<i>Current Yr 12</i>	22.6	10.0	23.4	34.6	22.7	11.1	28.6	18.6
<i>Deferrals</i>	<i>All Yrs</i>	82	4	20	10	8	13	5	22
	<i>Current Yr 12</i>	49	2	12	10	5	6	3	11
<i>Deferrals as % of offers</i>	<i>All Yrs</i>	12.7	16.0	12.9	13.7	7.2	17.3	13.5	13.0
	<i>Current Yr 12</i>	17.6	20.0	18.8	19.2	11.4	16.7	21.4	18.6
<i>Lapses</i>	<i>All Yrs</i>	266	11	63	27	41	32	19	73
	<i>Current Yr 12</i>	167	7	37	24	29	26	7	37
<i>Lapses as % of offers</i>	<i>All Yrs</i>	41.2	44.0	40.6	37.0	36.9	42.7	51.4	43.2
	<i>Current Yr 12</i>	59.9	70.0	57.8	46.2	65.9	72.2	50.0	62.7

## OTHER APPLICANTS

Mature Age WA Year 12 consists of those applicants who were over 20 years of age before 1 March 2016, applying on the basis of an ATAR obtained in the current year (2015). Non-WA Year 12 includes all applicants who didn't complete WA Year 12 in the current year, and includes interstate school leavers.

Mature Age WA Year 12 applicants received a slightly higher percentage of offers to applications (85.7%) compared to non-WA Year 12 applicants (81.1%).

**Table I: Applications, Offers and Enrolments for Mature Age WA Year 12 and Non-WA Year 12 Applicants, 2015-2016.**

	<b>Mature Age WA Yr 12</b>		<b>Non-WA Yr 12</b>	
	<b>2016</b>	<b>2015</b>	<b>2016</b>	<b>2015</b>
<b>Applications</b>	56	68	5,744	5,940
<b>Total Offers</b>	48	52	4,661	4,780
<b>(% of applications)</b>	85.7	76.5	81.1	80.5
<b>Total Enrolments</b>	31	39	3,569	3,530
<b>(% of offers)</b>	64.6	75.0	76.6	73.8
<b>1<sup>st</sup> Pref Offers</b>	29	30	3,941	4,071
<b>(% of applications)</b>	51.8	44.1	68.6	68.5
<b>1<sup>st</sup> Pref Enrolments</b>	19	25	3,189	3,181
<b>(% of 1<sup>st</sup> Pref offers)</b>	65.5	83.3	80.9	78.1
<b>Deferrals</b>	5	5	345	399
<b>(% of offers)</b>	10.4	9.6	7.4	8.3
<b>Lapses</b>	12	8	747	855
<b>(% of offers)</b>	25.0	15.4	16.0	17.9

The data in Table J below includes all applicants who declared New Zealand or other overseas school leaving qualifications, the International Baccalaureate (IB) or the STAT. Note that an applicant who completed high school overseas and then sat the STAT prior to application would be counted in both the STAT and Overseas data.

**Table J: Applications, Offers and Enrolments for those declaring New Zealand School Leaving, STAT, International Baccalaureate or Other Overseas School Leaving, 2015-2016.**

	<b>New Zealand</b>		<b>STAT</b>		<b>IB</b>		<b>Overseas</b>	
	<b>2016</b>	<b>2015</b>	<b>2016</b>	<b>2015</b>	<b>2016</b>	<b>2015</b>	<b>2016</b>	<b>2015</b>
<b>Applications</b>	50	65	758	811	103	120	319	384
<b>(% of total applications)</b>	0.3	0.5	4.1	5.8	0.6	0.9	1.7	2.7
<b>Offers</b>	29	36	667	677	79	89	260	312
<b>(% of applications)</b>	58.0	55.4	88.0	83.5	76.7	74.2	81.5	81.3
<b>Enrolments</b>	19	21	552	535	38	36	186	217
<b>(% of offers)</b>	65.5	58.3	82.8	79.0	48.1	40.4	71.5	69.6
<b>Deferrals</b>	5	1	51	51	4	8	25	32
<b>(% of offers)</b>	17.2	2.8	7.6	7.5	5.1	9.0	9.6	10.3
<b>Lapses</b>	5	14	64	91	37	45	49	63
<b>(% of offers)</b>	17.2	38.9	9.6	13.4	46.8	50.6	18.8	20.2

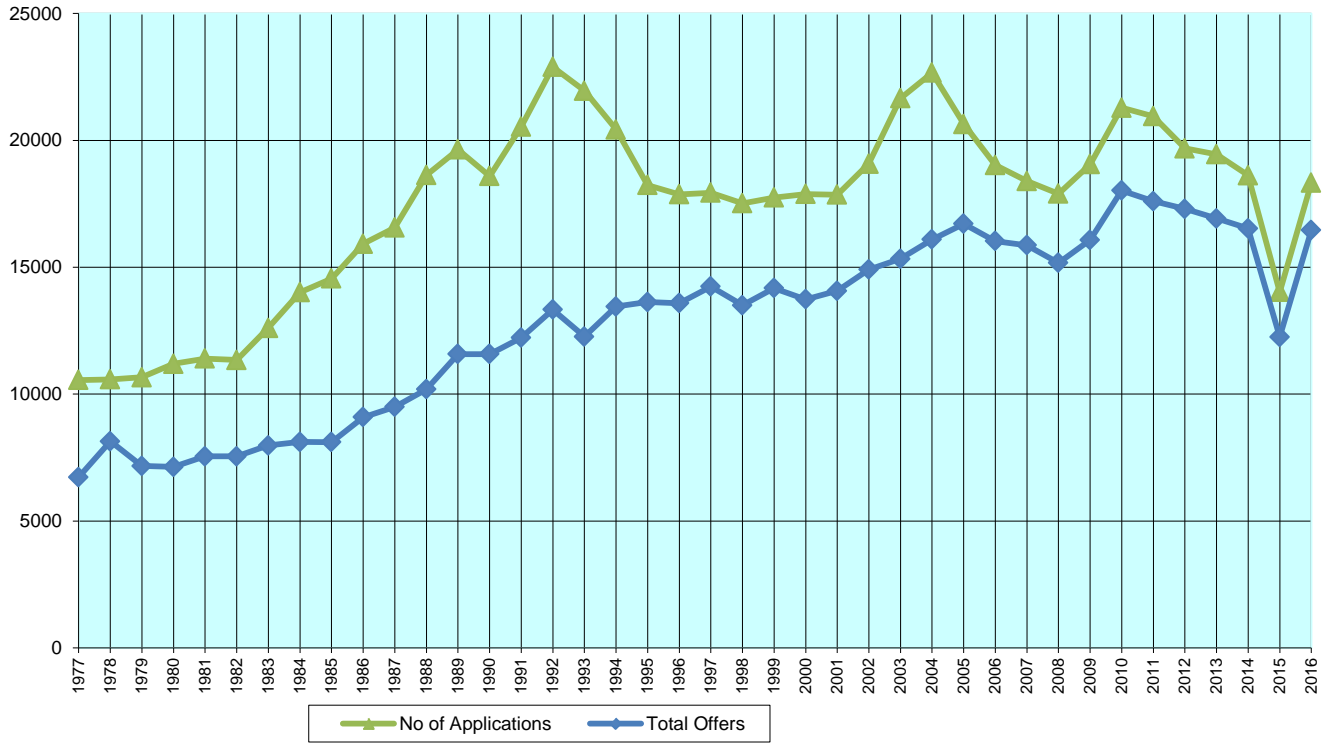
## FLOW PATTERN OF NON-WA YEAR 12 APPLICATIONS

The table below shows the number of non-WA Year 12 applications received and the total number that had been fully processed at the given dates.

**Table K: Flow of Non-WA Year 12 Applications Processing, 2014/2015 – 2015/2016**

	2015/2016			2014/2015		
	<i>Total Received</i>	<i>Total Processed</i>	<i>% Processed</i>	<i>Total Received</i>	<i>Total Processed</i>	<i>% Processed</i>
26 August	682	515	75.5	721	567	78.6
2 September	895	701	78.3	995	818	82.2
9 September	1,169	924	79.0	1,294	1,061	82.0
16 September	1,497	1,224	81.7	1,651	1,414	85.6
23 September	1,946	1,548	79.5	2,184	1,896	86.8
30 September	2,663	2,118	83.3	3,084	2,485	80.6
7 October	2,952	2,511	85.0	3,219	2,863	88.9
14 October	3,076	2,760	89.7	3,382	3,126	92.4
21 October	3,280	3,025	92.2	3,543	3,345	94.4
28 October	3,460	3,253	94.0	3,681	3,606	98.0
4 November	3,635	3,449	94.9	3,839	3,784	98.6
11 November	3,953	3,783	95.7	4,037	3,962	98.1
18 November	4,068	3,915	96.2	4,270	4,196	98.3
25 November	4,721	4,171	88.3	4,525	4,447	98.3
2 December	4,587	4,327	94.3	4,805	4,706	97.9
9 December	4,700	4,618	98.2	4,979	4,904	98.5
16 December	4,833	4,790	99.1	5,131	5,055	98.5
23 December	4,966	4,911	98.9	5,294	5,232	98.8
30 December	5,045	4,992	98.9	5,400	5,327	98.6
6 January	5,243	5,175	98.7	5,506	5,494	99.8
13 January	5,315	5,315	100	5,504	5,504	100
20 January	5,312	5,312	100	5,872	5,754	98.0
<b>FINAL</b>	5,742	5,742	100%	5,940	5,940	100%

## APPLICATIONS AND OFFER STATISTICS 1977-2016



# WEB SITE STATISTICS

---

## 2015/2016 SUMMARY

The TISCOOnline suite comprises four systems which include Public, Intersystem Data Validation and Replication, Member Administration and Course Administration. The statistics included in this report are related to the Public system only and were extracted from the public web server access logs and TISCOOnline database.

The statistics were obtained from 1 July 2015 to 30 June 2016. During this period there were around 38 million hits resulting in around 13.6 million page views. The busiest periods recorded were WA Year 12 Results, release of main round offers and the week leading up to on-time application fee deadline respectively. These three events alone generated over 25% of the total number of hits and around 25% of the total page views.

A noticeable increase in overall hits compare to last year (30 million) is mainly due to a significant increasing (28% compare to last year) of university applicants for 2016 admission year. The increase of applicants is primarily due to the half-year cohort of WA Year 12 students last year.

## Snapshot for 2015/2016 Processing Year

Parameter	Statistics
Total Hits	38 million
Total Page Views	13.6 million
Total Unique Visitors	287,955 (Unique Internet Addresses)
Total Sessions	752,326
Total Duration for all Sessions	13 years
Total Data Transferred	224.21 Giga Bytes
Average Hits Per Day	103,453
Average Data Transferred Per Day	627.28 Mega Bytes
Maximum Concurrent Sessions	1,566
TISCOOnline Active Members	24,241

## Busiest Periods

Event	Period	Hits ▼	Page Views	Visitors	Size (Giga Bytes)
WA Year 12 Results & COPs <sup>[1]</sup>	29/12/15 - 04/01/16	4.7 million	1.5 million	35,792	21.55
Main Round Offers & COPs	19/01/16 - 25/01/16	2.8 million	0.9 million	26,905	12.07
On-time Application Deadline	24/09/15 - 30/09/15	2.2 million	1.0 million	14,692	8.95

<sup>[1]</sup> COP denotes Change of Preferences.

**Hits:** All valid accesses to the web server; eg an html page with 5 graphics, 1 style sheet and 1 JavaScript file will result in 7 hits each time this page is accessed.

**Page Views:** Number of times a page is accessed. Page views only include hits to the page; eg. If index.html includes 5 graphics, 1 style sheet and 1 JavaScript file it will be counted as 1 page view only.

**Size:** Total number of bytes transferred for hits or page views.

**Visitors:** Corresponds roughly to the total number of persons who visited the site. The figure is achieved by counting unique IP Addresses and therefore the same person may get counted multiple times if his/her IP address changes or he/she accesses the site from different computers. On the other hand multiple persons may get counted as a single visitor if they have a single point of internet access which most organisations do. Also note that if a single visitor views 10 different pages or the same page 10 times it will be counted as 10 page views and 1 visitor.

**Sessions:** The period of time a user interfaces with an application. Sessions are similar to visitors, except that they can timeout (20 minutes). If a visitor leaves the site and comes back before timeout, it is still a single session; otherwise it will count as two sessions. Concurrent sessions roughly correspond to the number of users accessing application simultaneously.

**Active Members:** Users registered with TISCOOnline and have successfully authenticated at least once.

## Busiest Days

The following table lists the 10 busiest days during 2015/2016 processing year, five of which are related to the on-time application deadline.

Date	Hits ▼	Page views	Visitors	Event
29/Dec/2015	2,403,536	747,301	18,074	First day of WA Year 12 results published
19/Jan/2016	1,027,136	320,065	12,202	First day of main round offers published
30/Dec/2015	852,577	295,157	11,084	Second day of WA Year 12 results published
20/Jan/2016	834,596	296,263	10,687	Second day of main round offers published
29/Sep/2015	549,293	248,407	4,094	A day before on-time applications deadline
30/Sep/2015	424,728	189,058	3,423	Last day for on-time applications
28/Dec/2015	398,799	116,700	4,931	The day before WA Year 12 results published
04/Jan/2016	385,766	135,235	5,500	Two days before main round applications and change of preferences deadline
05/Jan/2016	378,285	138,955	4,891	The day before main round applications and change of preferences deadline
28/Sep/2015	368,072	166,070	3,137	Leading up to on-time applications deadline



## Top 20 Most Relevant Pages/Services by Page Views

The 2015/2016 processing year followed a general trend from previous years in terms of service utilisation. The table below lists the top 20 most utilised services for the processing year.

#	Page Views ▼	Page/Service Description
1	543,193	TISC Home page – Latest News
2	536,617	Course search
3	276,528	Post authentication member welcome page
4	229,541	ATAR Calculator
5	165,836	Individual course detail page
6	141,159	WA Year 12 Results view attempts by authenticated users
7	138,764	Information about requirements and preparation for applying online
8	88,342	About ATAR information page
9	79,176	University offer view attempts (both successful and unsuccessful attempts)
10	62,638	How to apply online
11	52,829	2003-onwards ATAR cut-offs ranks
12	48,728	Forgotten/new password request
13	41,521	Important dates (TISC Calendar)
14	40,933	Frequently Asked Questions
15	37,767	My Course Folder <sup>[1]</sup>
16	32,622	Information about university admission
17	28,495	Change of preferences committed page
18	16,133	Downloads page
19	5,423	Subscription Request
20	2,248	Information about ordering UAAL

<sup>[1]</sup> My Course Folder Service

A registered user feature, which facilitates short listing courses for reference purpose. Users can prioritise courses within the folder and transfer selected courses to specified preferences in the application. This processing year 2,879 users utilised this feature short listing 360 unique courses with an average of 3 courses per user.

## MONTHLY REPORT

This report shows statistics for each month for the 2015/2016 processing period. The table lists the monthly total for each category, whereas the graph illustrates monthly usage as a percentage of the total over the measured period in a corresponding category.

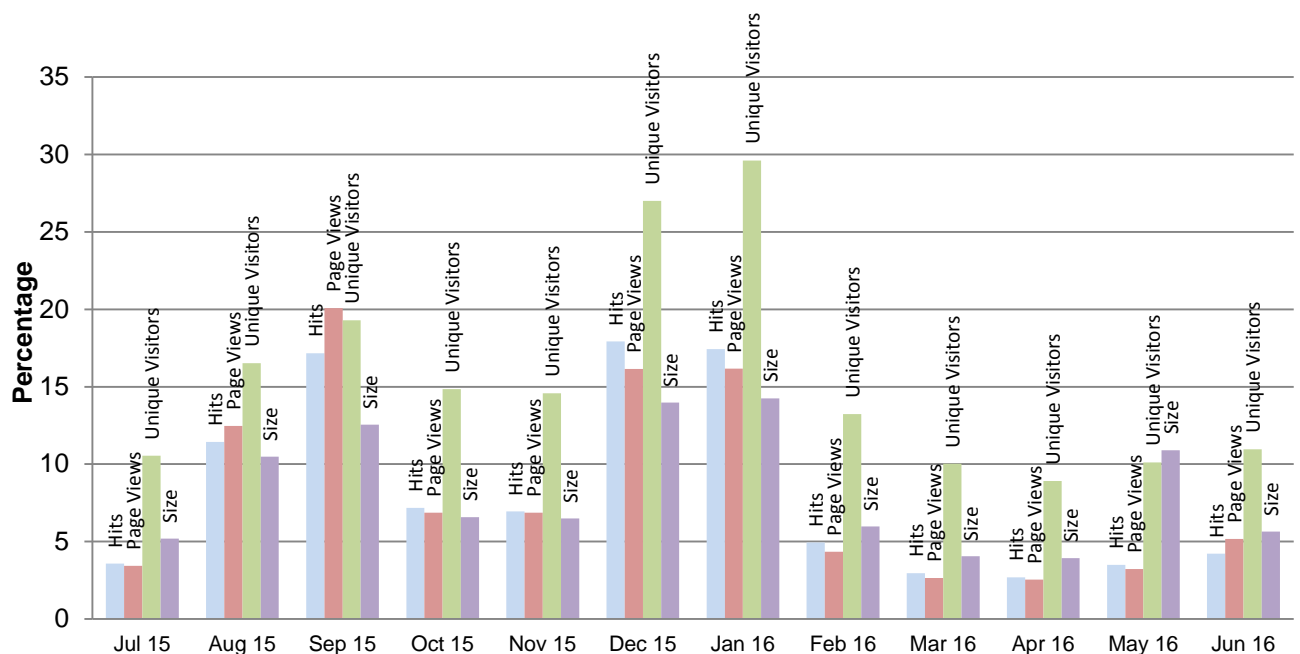
December 2015, release of WA Year 12 results, registered the highest with 17.93% of total hits.

January 2016 registered at the second highest with 17.42% of total hits due to events relating to applications and change of preferences deadlines for main and second round offers, and the release of main round offers.

September 2015 registered at the third highest hits (17.17% of total), highlighting a rush to beat the deadline for on-time applications.

Month	Hits	Page views	Unique Visitors	Size (Giga Bytes)
Jul 2015	1,358,766	467,840	21,975	11.62
Aug 2015	4,331,299	1,695,337	34,409	23.51
Sep 2015	6,502,440	2,726,796	40,195	28.13
Oct 2015	2,718,822	933,120	30,944	14.74
Nov 2015	2,629,556	933,102	30,376	14.54
Dec 2015	6,787,812	2,193,038	56,276	31.35
Jan 2016	6,596,857	2,197,693	61,709	31.97
Feb 2016	1,872,764	591,040	27,564	13.41
Mar 2016	1,123,916	360,388	20,906	9.07
April 2016	1,021,502	344,460	18,565	8.79
May 2016	1,321,847	439,500	21,074	24.43
Jun 2016	1,598,302	702,012	22,852	12.66

### Monthly Usage in Percentage



## UNIVERSITY APPLICATIONS

Since the opening on 10 August 2015 a total of 18,244 web applications (12,500 WA Year 12 and 5,744 Non-WA Year 12) were processed for university admission, out of which 17,868 (97.94%) were paid online and 376 (2.06%) were paid using alternative payment methods via TISC. The upward trend in online payment method has continued since the inauguration of TISCONline.

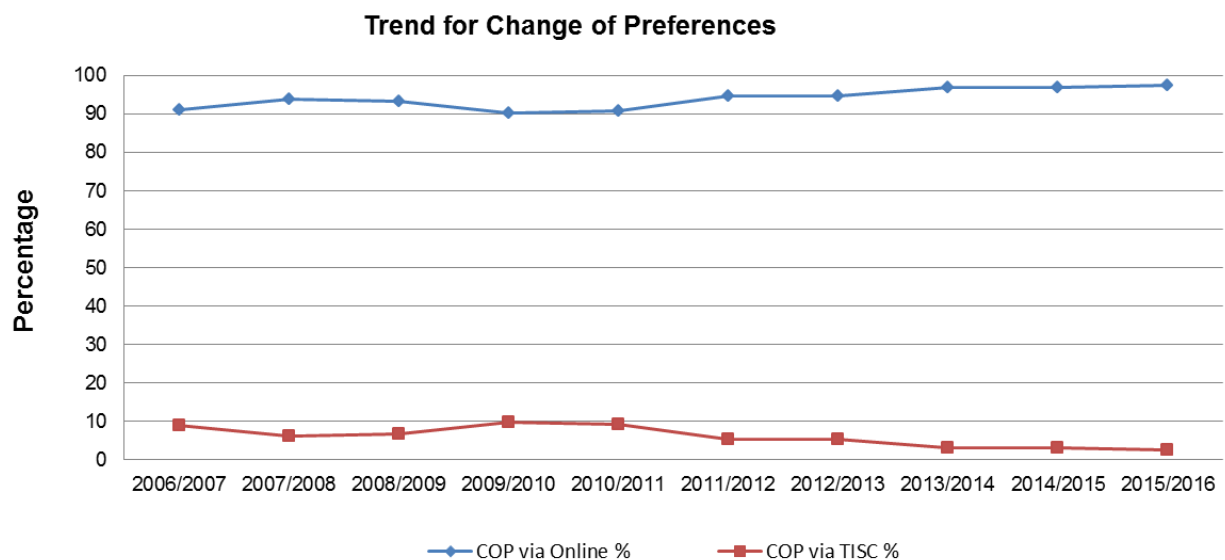
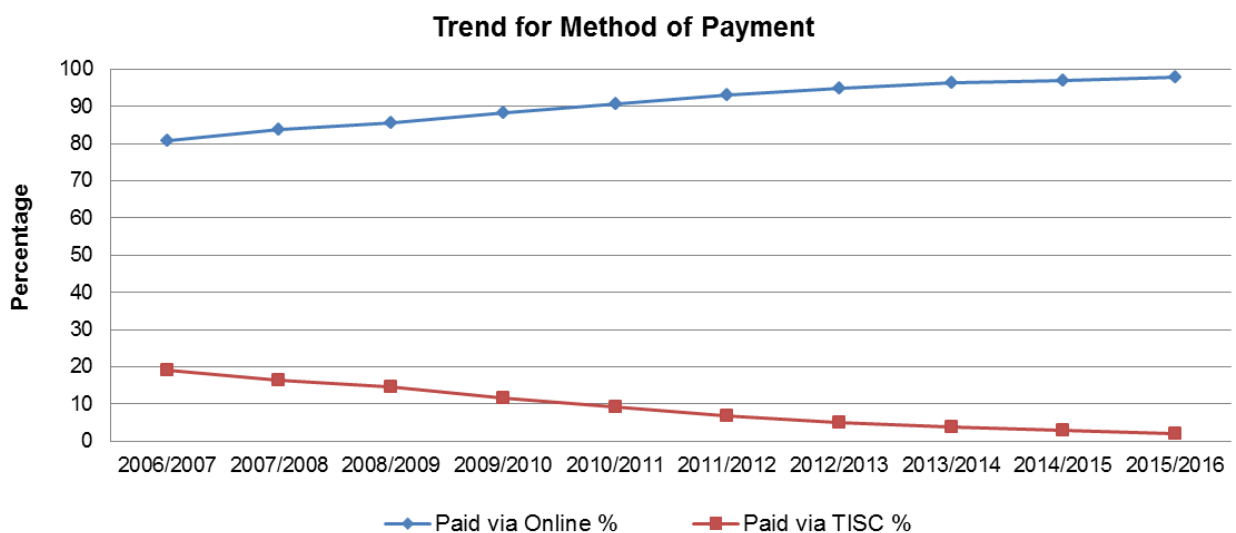
All applicants who wish to change preferences must do so online. TISC staff make manual changes for error corrections, withdrawals of courses and other reasons. This year a total of 97.40% changes of preferences were committed via online and 2.60% were done by TISC staff.

### Applications and Change of Preferences Committed Online

Applications				Changes of Preferences Committed		
Total Paid	Paid Online	Paid at TISC	Declared but not Paid	Via Online	By TISC	Total <sup>[1]</sup>
18,244	17,868	376	1,216	17,828	476	18,304

<sup>[1]</sup> Includes an applicant's multiple change of preferences on the same day.

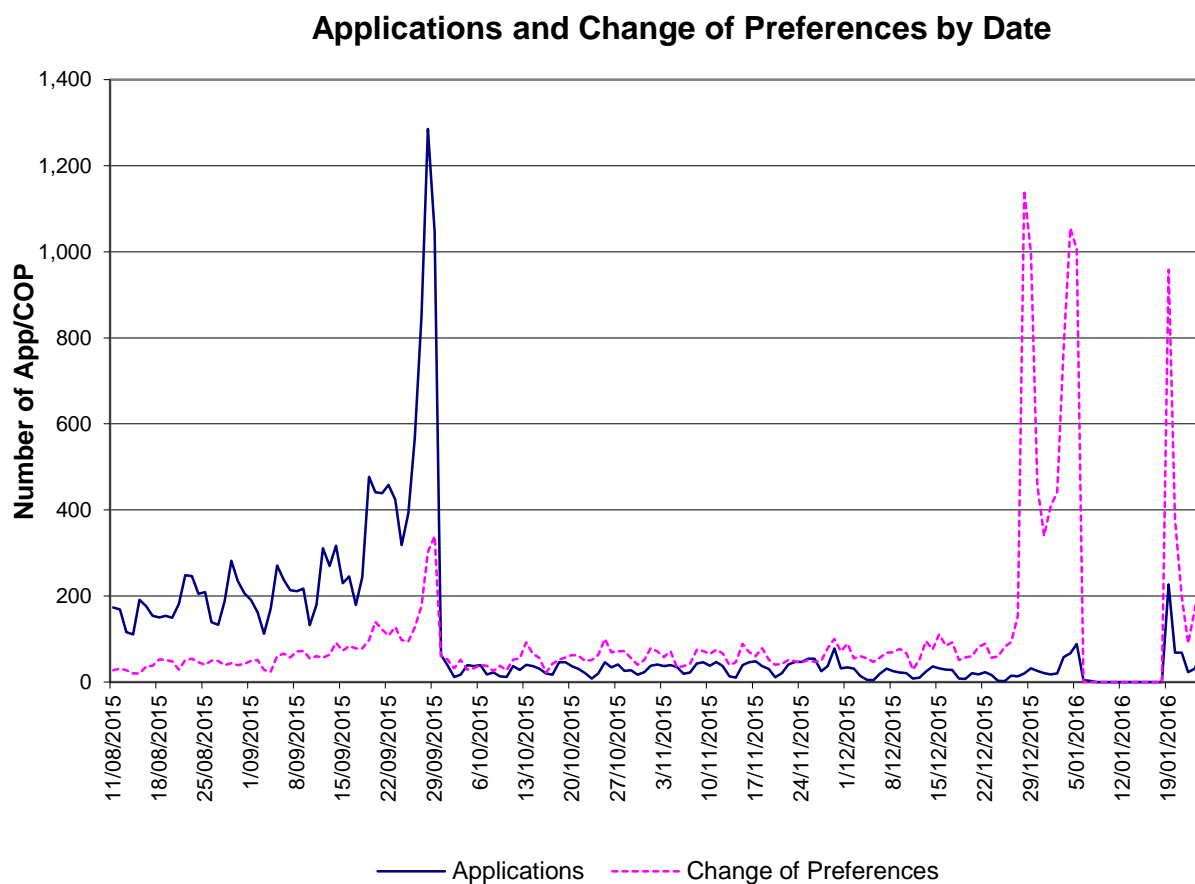
Graphs below show the trend for method of payments and change of preferences for online applications since TISCONline became the primary method for lodgement of applications.



## Applications and Change of Preferences by Date

The graph below shows daily activity for the number of applications submitted and changes of preferences committed online. A very high jump in applications towards end of September 2015 reflects a rush to beat the on-time application deadline at 11:00pm on 30 September.

The change of preferences show increased activity from the release of WA Year 12 results (29 December 2015) until closing date (6 January 2016) for main round offers preparation (6 January 2016), and from opening date for second round offers preparation (20 January 2016) until the final closing date (11:00pm 25 January 2016).



## WA YEAR 12 RESULTS AND ATARS

The WA Year 12 results and ATARs were released at 4:30pm 29 December 2015, a day earlier than the publicised date.

Since the opening a total of 14,108 students have viewed their results 44,409 times. The busiest day recorded was 29 December when results were viewed 23,695 times by 11,868 students. This day also registered over 2.4 million hits, over 0.74 million page views and 18,074 unique visitors to the website. The following two tables list daily result statistics for a 7 day period from the opening date, and hourly statistics for the busiest day.

### Results viewed by Date

Date/Time ▲	Results Views	Students
29/Dec/2015	23,695	11,868
30/Dec/2015	7,473	4,152
31/Dec/2015	1,721	1,137
1/Jan/2016	843	621
2/Jan/2016	896	617
3/Jan/2016	791	544
4/Jan/2016	1,330	895

### Results viewed on 29 December by Hour

Hour of Day ▲	Results Views	Students
4:00 PM – 5:00 PM	3,968	2,720
5:00 PM – 6:00 PM	8,007	5,242
6:00 PM – 7:00 PM	3,996	2,638
7:00 PM – 8:00 PM	2,539	1,495
8:00 PM – 9:00 PM	1,870	1,197
9:00 PM – 10:00 PM	1,429	924
10:00 PM – 11:00 PM	1,133	712
11:00 PM – Midnight	753	509

**Page Views:** Number of times a page is accessed. Page views only include hits to the page; eg. If index.html includes 5 graphics, 1 style sheet and 1 JavaScript file it will be counted as 1 page view only.

**Visitors:** Corresponds roughly to the total number of persons who visited the site. The figure is achieved by counting unique IP Addresses and therefore the same person may get counted multiple times if his/her IP address changes or he/she accesses the site from different computers. On the other hand multiple persons may get counted as a single visitor if they have a single point of internet access which most organisations do. Also note that if a single visitor views 10 different pages or the same page 10 times it will be counted as 10 page views and 1 visitor.

## UNIVERSITY OFFERS

The main round offers were published online at 5:00pm 19 January 2016 and 2<sup>nd</sup> round offers were published at 4:30pm 2 February 2016. Since offers opening a total of 12,131 applicants have viewed their main round offers for 40,545 times, and 1,625 applicants have viewed their second round offers for 4,000 times.

The busiest period recorded was between 19 and 20 January which registered 25,315 offer views by 10,961 applicants. Overall, these two days recorded over 1.8 million hits, over 0.61 million page views and 18,781 unique visitors. The busiest hours on these days were between 5pm to midnight on 19 January and between 5am to 7pm on 20 January.

### Main Round Offers viewed by Date

Date/Time ▲	Offer Views	Applicants
15/Jan/2016	14,668	8,063
16/Jan/2016	10,647	5,611
17/Jan/2016	2,076	1,299
18/Jan/2016	1,105	744
19/Jan/2016	596	417
20/Jan/2016	734	502
21/Jan/2016	1,140	647

### Second Round Offers viewed by Date

Date/Time ▲	Offer Views	Applicants
2/Feb/2016	1,327	681
3/Feb/2016	1,981	1,044

Page Views: Number of times a page is accessed. Page views only include hits to the page; eg. If index.html includes 5 graphics, 1 style sheet and 1 JavaScript file it will be counted as 1 page view only.

Visitors: Corresponds roughly to the total number of persons who visited the site. The figure is achieved by counting unique IP Addresses and therefore the same person may get counted multiple times if his/her IP address changes or he/she accesses the site from different computers. On the other hand multiple persons may get counted as a single visitor if they have a single point of internet access which most organisations do. Also note that if a single visitor views 10 different pages or the same page 10 times it will be counted as 10 page views and 1 visitor.

## WAUFP RESULTS

The WAUFP and WAUFP Fast Track Results were published online at 11:30am 9 December 2015. Since the opening a total of 147 WAUFP candidates have viewed their results 411 times.

### WAUFP Results viewed by Date

Date/Time ▲	Results Views	Students
09/Dec/2015	265	130
10/Dec/2015	44	28
11/Dec/2015	10	8
12/Dec/2015	1	1
13/Dec/2015	3	3
14/Dec/2015	17	11
15/Dec/2015	7	7

## UAAL HARDCOPY ORDERS

This year 2,126 students ordered 2,409 Universities Admission Advice Letter (UAAL) hardcopies via TISOnline by online credit card payment.

## TISCONLINE STATIC CONTENT SEARCH

Content search facility allows users to search static contents within TISOnline. This year a total of 19,394 search queries have been committed including 18,243 distinct phrases. The highest number of search queries in a day (796) was recorded on 29 December 2015 for Year 12 results opening. Top five most relevant searches this year were "tisc", "uniready", "uaal", "atar", and "automatic+safety+net".

## BROWSER COMPATIBILITY

TISOnline has been fully tested with four leading Internet browsers, which are listed below with usage statistics.

Browser	Hits ▼	Page Views	Visitors
Chrome	15.57 million	5.56 million	130,259
Safari	13.06 million	3.93 million	121,014
Firefox	2.69 million	1.00 million	8,518
Internet Explorer	1.71 million	0.68 million	8,731

## MOBILE DEVICES COMPATIBILITY

Traffic from mobile devices has continued to increase. TISOnline has been tested to function on default browsers of leading portable devices running Apple iOS and Google's Android operating system.

Mobile OS	Hits ▼	Page Views	Visitors
Apple iOS devices	8.00 million	2.29 million	9,114
Google Android devices	2.15 million	0.62 million	8,488

## WEB REFERRALS

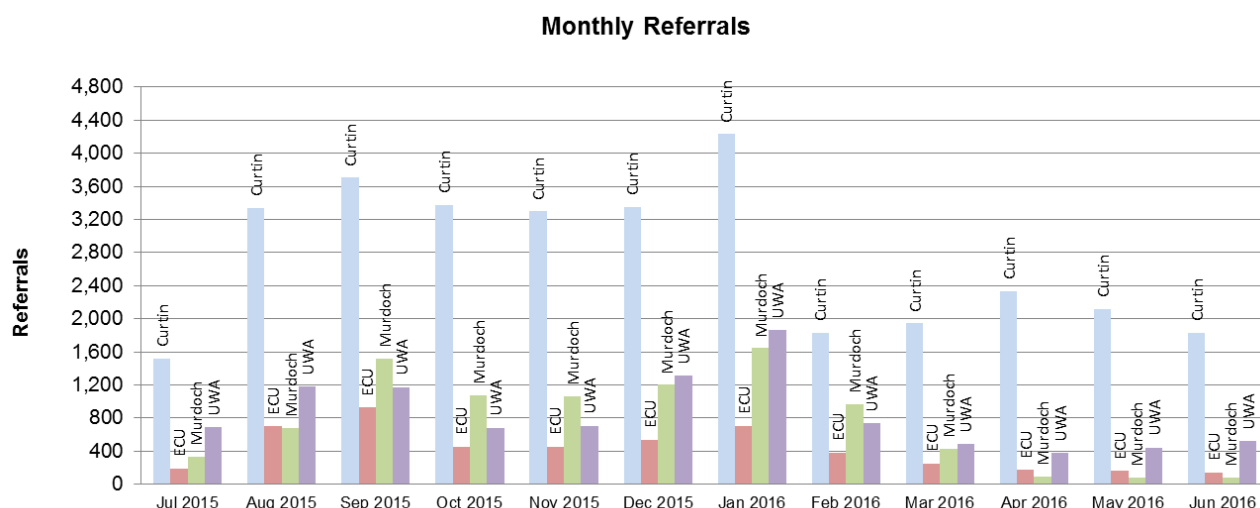
The referral statistics represent traffic to TISOnline from a direct link on external websites. It helps to identify major sources of external traffic as opposed to direct navigation to TISOnline. The figures listed below are aggregated across all websites, per organisation, hosted under primary or sub domains as well as known associated websites hosted under different domain names.

### Referrals from Member Universities

This year overall 8,402 unique visitors were referred to TISOnline from the member universities' websites; covering 8,309 from Curtin, 4,058 from ECU, 5,613 from Murdoch and 8,209 from UWA. The Curtin figures include referrals from Studentbox, a website targeted at high school students and run by Curtin. The Studentbox website alone referred 3,614 unique visitors for a total of 4,727 times. The table and graphs below shows monthly statistics for 2015/2016 processing period.

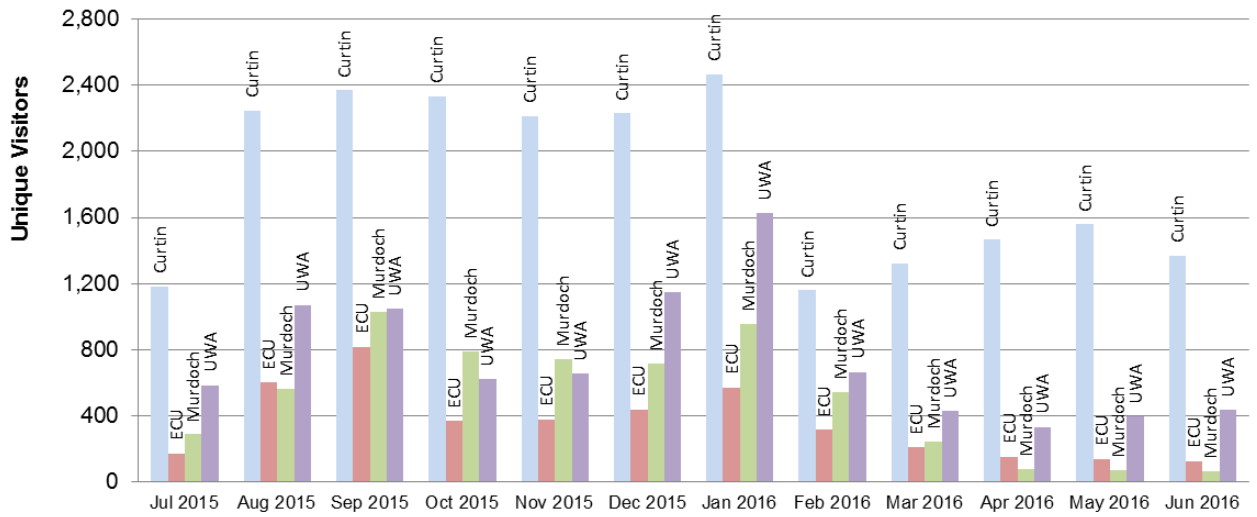
Month	Curtin		ECU		Murdoch		UWA		Total Referrals <sup>[1]</sup>
	Referrals	Visitors	Referrals	Visitors	Referrals	Visitors	Referrals	Visitors	
Jul 2015	1,518	1,183	192	173	329	287	690	585	2,729
Aug 2015	3,342	2,247	701	601	680	564	1,179	1,069	5,902
Sep 2015	3,706	2,370	928	818	1,521	1,031	1,174	1,047	7,329
Oct 2015	3,378	2,335	452	367	1,075	788	681	621	5,586
Nov 2015	3,297	2,214	456	379	1,064	742	705	654	5,522
Dec 2015	3,350	2,230	534	439	1,201	718	1,308	1,148	6,393
Jan 2016	4,234	2,465	703	569	1,643	954	1,866	1,627	8,446
Feb 2016	1,834	1,160	380	315	965	542	735	665	3,914
Mar 2016	1,945	1,322	252	208	432	246	482	430	3,111
Apr 2016	2,332	1,466	173	150	93	77	381	333	2,979
May 2016	2,116	1,559	158	140	82	72	443	397	2,799
Jun 2016	1,833	1,369	145	126	78	65	519	436	2,575
<b>Total Referrals<sup>[1]</sup></b>	<b>32,885</b>	<b>-</b>	<b>5,074</b>	<b>-</b>	<b>9,163</b>	<b>-</b>	<b>10,163</b>	<b>-</b>	<b>57,285</b>

<sup>[1]</sup> Represent referral to contents pages, eg a link to a TISOnline homepage.



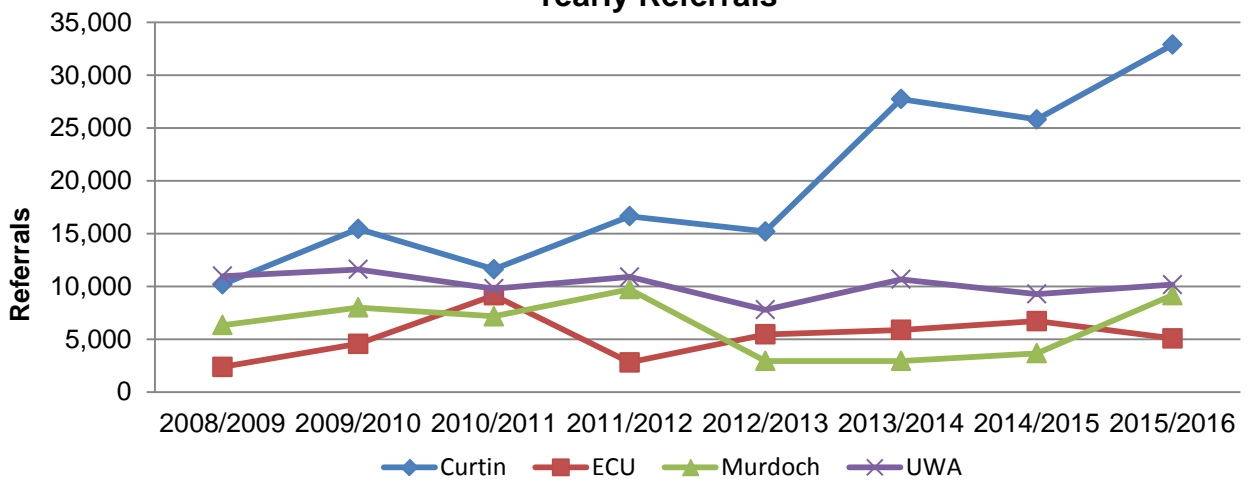


### Monthly Unique Visitors

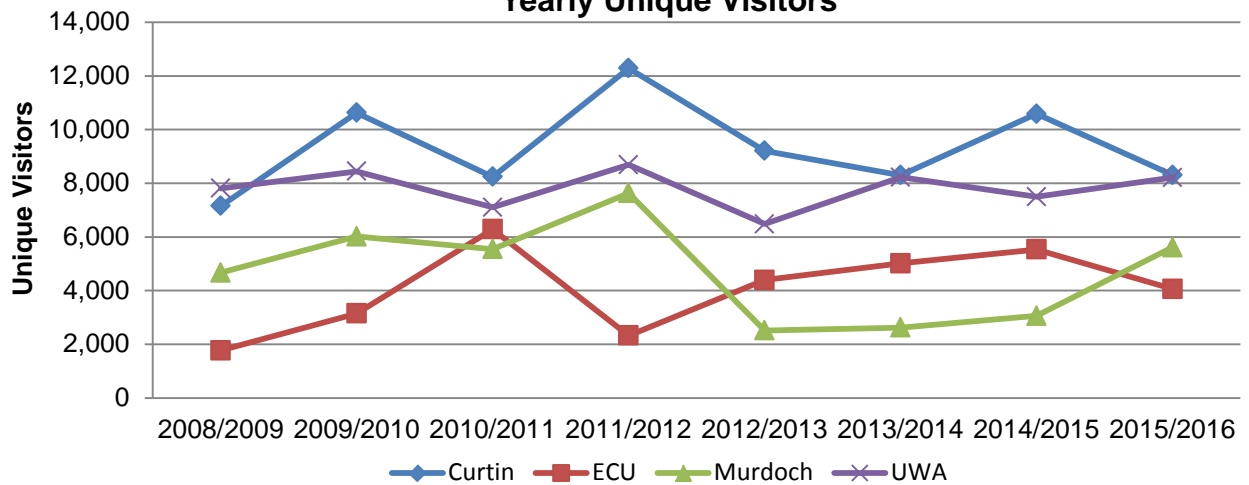


Graphs below show referral movement for member universities over the last seven years. The noticeable variation in 2010/2011 relates to the first year of the new TISOnline, where links to individual pages had not yet been fully updated to conform to new TISOnline.

### Yearly Referrals



### Yearly Unique Visitors



### **Referrals from other Major Websites**

Two non-university websites with noticeable referral statistics were Facebook, with 4,049 referrals by 2,665 visitors, and School Curriculum and Standards Authority (SCSA), with 2,573 referrals by 2,119 visitors. Compared to last year both sites registered an increase in referrals. Facebook visitor referrals are up by 29.24% and SCSA by 111.90%.

### **Referrals from Major Search Engines and Search Phrases**

These referrals represent traffic where users search a phrase via a search engine and then follow a link in the results to TISCOOnline. Google registered the highest referrals at 95.3% (307,148 hits) followed by Bing at 3.7% (11,761 hits) and Yahoo at 1.0% (3,194 hits). The top five search phrases recorded were "TISC" (8,844 hits), "ATAR Calculator" (976 hits), "www.tisc.edu.au" (461 hits), "STAT Test WA" (319 hits) and "ATAR" (281 hits).

### **Direct Access (No Referrals)**

This represents traffic where users visit TISCOOnline directly, eg by typing a URL in the browser address bar, by opening a bookmark or by clicking a link in an email. This year around 1.78 million direct visits were recorded by 9,562 unique visitors.

### **EMAIL SUBSCRIPTION SERVICE UPDATES**

A total of 2,629 subscribers are currently active on TISCUUpdates recipient list (2,608 in June 2015). Since July 2015, a total of 327 new subscribers have signed up.

## SPECIAL TERTIARY ADMISSIONS TEST

The Special Tertiary Admissions Test (STAT) is an aptitude test designed to assess a range of competencies considered important for success in tertiary study. Many tertiary institutions in Australia use STAT as part of their admissions procedures for mature-age applicants.

TISC uses two tests: a Multiple Choice test (STAT MC) and a Written English test (STAT WE). STAT MC is a two-hour test containing 70 questions, half of which have a verbal emphasis (social science/humanities) while the other half have a quantitative emphasis (mathematical/science). STAT WE is a one-hour written English test, consisting of two short essay questions. Part A is a public affairs issue that invites argument, while Part B asks candidates to write from a more personal point of view. Each section gives a choice of four topics.

Both tests are produced and marked by the Australian Council for Educational Research (ACER) in Victoria. Each year a number of questions in the test papers are changed so that all questions are replaced over a five-year period.

All interstate results are sent to TISC which places them into a national database.

Overseas test sessions are all administered by ACER, which then forwards the results to TISC. The information is entered into the national database by TISC, which produces results letters. These are then despatched to candidates. ACER also organises a number of special sittings in Victoria every year. Results for these sessions are also sent to TISC and processed in the same way as for the overseas sessions.

### STAT ENROLMENTS

In the 2015 STAT year 1,679 candidates attended STAT (this includes 403 school leaver candidates who sat in January). This is a decrease on the previous year when 1,720 candidates sat STAT.

The following table shows the breakdown of enrolments in each test as well as a comparison with previous years:

	2013		2014		2015	
	Booked	Attended	Booked	Attended	Booked	Attended
Written English & Multiple Choice	1,422	1,321	1,132	1,070	1,105	1,049
Multiple Choice only*	246	252	188	194	183	189
Written English only	423	422	455	456	444	441
Multiple Choice Total	1,668	1,573	1,320	1,264	1,288	1,238
Written English Total	1,845	1,743	1,587	1,526	1,549	1,490
Total Number of Candidates	2,091	1,995	1,775	1,720	1,732	1,679

\* From the table, it can be seen that the numbers booked to sit only the Multiple Choice test are less than those who actually sat the test. This is because some candidates enrol in both the Multiple Choice and the Written English tests, but then leave after the Multiple Choice section and do not reapply to sit the Written English test.

### STAT SCORES

From 2010 ACER changed the methodology of STAT scores from that used previously. This meant that STAT scores from May 2010 onwards had a different meaning from previous years (1996-2009). The minimum STAT scores required by the universities for candidates with results from 2010 onwards are as follows:

	Minimum MC score	Minimum WE Score
Curtin University	135 (Verbal or Quantitative)	140
Edith Cowan University	110 (Verbal or Quantitative)	140
Murdoch University	135 (Verbal or Quantitative)	140
The University of Western Australia:		
STAT alone entry	140 (Verbal Only)	160
Competence in English	140 (Verbal Only)	140

In 2015, 832 (79.3%) of the 1,049 candidates who sat both STAT WE and STAT MC met the minimum requirement for admission to ECU and 822 (78.4%) for Murdoch and Curtin universities.

Of the 1,049 candidates who sat STAT MC and STAT WE, 365 (34.8%) obtained the minimum marks of 140 in STAT MC (Verbal) and 160 in STAT WE required by UWA.

With the changed methodology there is the possibility that there may be scores slightly below 100 and slightly above 200.

The results are shown below in table form:

	<b>Minimum Score</b>	<b>Maximum Score</b>	<b>Mean</b>	<b>Standard Deviation</b>
<b>STAT MC</b>	121	197	150.63	12.41
<b>STAT WE</b>	100	200	153.79	12.41

## **TESTING SESSIONS IN THE METROPOLITAN AREA**

There were ten metropolitan sessions run throughout the year at Canning College in Bentley. The dates for these are shown below:

9 May 2015	17 October 2015
23 May 2015	7 November 2015
20 June 2015	28 November 2015
15 August 2015	9 January 2016
19 September 2015	30 January 2016

The first three sessions were held in semester one, primarily for second semester university.

An extra January session was held again this year. 62 candidates booked for this session and 60 attended. Results were not available in time for the second round of offers.

There were two special sessions (one in May, the other in November) held on a Friday morning at TISC for people who, for work or religious reasons, could not sit STAT on a Saturday. These two sessions help minimise the number of individual sittings at TISC for candidates in this category. The first of these sessions was held on 15 May 2015 and 2 candidates sat both STAT MC and STAT WE (1 in May 2014). The second session was held on 13 November 2015 and 4 candidates sat STAT MC and STAT WE (8 in November 2014).

Sessions were also organised for 19 candidates with special needs where a disability was involved:

- 8 candidates who only required extra time did their test at Canning College. They were school leavers invited to sit STAT in order to meet the competence in English requirement of the universities.
- The remaining 11 candidates sat the test at TISC.

No additional charge was raised by TISC for organising and running the sessions for these 19 candidates.

## **SCHEDULED TESTING SESSIONS IN REGIONAL AREAS**

Tests in regional areas were held during a specified week in both May and November 2015. This week is advertised every year on the STAT booking form. Venues and supervisors are organised by the STAT Coordinator.

In May 2015, 5 sessions were held in 5 regional centres, and in November 2015, 13 sessions were held in 13 centres including 4 of the centres where a session was held in May 2015.

There was a small increase in the number of country STAT sessions held as in the previous year but a decrease in the overall numbers sitting in a regional area. 49 candidates enrolled to sit the STAT in regional areas in 2015 compared to 58 in 2014. Enrolments for the 2015 (2014) country testing sessions were as follows:

Centres	Numbers Booked	Centres	Numbers Booked
Albany	9 (9)	Halls Creek	1 (0)
Broome	2 (4)	Kalgoorlie	4 (6)
Bunbury	15 (17)	Karratha	4 (1)
Carnarvon	1 (0)	Kununurra	1 (0)
Esperance	2 (0)	Narrogin	2 (1)
Exmouth	1 (0)	Port Hedland	1 (2)
Geraldton	5 (14)	Tom Price	1 (0)
		<b>Total*</b>	<b>49</b>

Below is a comparison of the total number of enrolments for the country STAT from 2011 through to 2015.

	2011	2012	2013	2014	2015
STAT Multiple Choice	84	72	55	54	45
STAT Written English	82	69	56	54	48

### SCHEDULED TESTING SESSIONS IN PRISONS

TISC has a very flexible policy for scheduling testing sessions in prisons as the prisons have Education Officers available to supervise the candidates. Contact is made with the Education Officers each year and sessions can be held on a week day between May and November each year. For the last three years, only a few prisons have held STAT sessions each year (2 prisons in 2015, 2 prisons in 2014, 2 prisons in 2013, 2 prisons in 2012).

During the 2015 STAT year two sessions were run in two prisons:

Location	Attended
Pardelup	1
Wooroloo	1
<b>Total</b>	<b>2</b>

### SPECIAL USE OF STAT

A large number of candidates sitting the 9 January 2016 session were Year 12 students who had achieved a competitive ATAR but had not met competence in English. Results were available in time for the main round of university offers.

The University of Western Australia requires Year 12 students to take both STAT Written English and STAT Multiple Choice tests and to achieve a mark of 140 or better in both STAT WE and STAT MC (Verbal component). The other three public universities require Year 12 students to sit STAT WE only and to achieve a mark of 140 or better in this test.

There were 403 Year 12 students sitting the STAT in January 2016, of whom 277 sat STAT WE only. The number of students sitting only STAT WE increased by 28.9% on the 197 who sat in the previous year. The higher number in 2015 compared to 2014 can be attributed to the 2014 school leavers being the 'half-year' cohort.

81.7% of those who used only STAT WE to meet literacy actually met this requirement. 62.7% of those using both STAT MC and STAT WE met competence in English for UWA.

The figures for 2016 (2015) are shown in the table below.

Attended	STAT MC + WE		STAT WE only	
	126 (102)		277 (197)	
	Population	%	Population	%
<b>Met UWA requirement of WE mark and MC verbal mark <math>\geq 140</math></b>	99 (64)	78.6 (62.7)	-	-
<b>Met Curtin, ECU and Murdoch requirement of WE mark <math>\geq 140</math></b>	117 (78)	92.9 (76.5)	257 (161)	92.8 (81.7)

*\*NB: Among the 21.4% who did not meet the literacy requirement for UWA via STAT MC and STAT WE, a number of candidates may have met the requirement via STAT WE (for ECU, Curtin University and Murdoch University) if their English mark was 140 or more.*

A January STAT comparison with the past years' figures is shown below:

Year	Total number of candidates	STAT Multiple Choice (MC)	STAT Written English (WE)	Score of $\geq 140$ in WE	% Achieving $\geq 140$ in WE	Score of $\geq 140$ in STAT MC (Verbal) + in STAT WE	% Achieving $\geq 140$ in STAT MC (Verbal) + in STAT WE
2014	368	118	368	316	85.9%	93	78.8%
2015	299	102	299	239	79.9%	64	62.7%
2016	403	126	403	374	92.8%	99	78.6%

## STAT NATIONAL DATABASE

The STAT National Database was established in November 1996. It was developed and is administered by TISC. It contains results for all candidates who have sat STAT in Australia from 1996 onwards.

The interstate Tertiary Admissions Centres send results files electronically after each STAT sitting in their state.

## CHANGES THAT OCCURRED IN 2015

1. Security was used at Canning College for the 28 November and 9 January testing sessions only, due to the number of candidates sitting.
2. A special session was held on Thursday, 14 January 2016 for those candidates affected by the bushfires in Collie/Harvey and could not attend the test on Saturday, 9 January. 7 candidates attended this session. The results from this session were not available in time for the main round of offers but were available for the second round.
3. An additional session was again held on 30 January 2016 at the request of the universities. 60 candidates attended this session compared with 79 who sat the 31 January 2015 test.

# **WESTERN AUSTRALIAN UNIVERSITIES' FOUNDATION PROGRAM**

---

The Western Australian Universities' Foundation Program (WAUFP) is a course of academic study for entry to the four public universities in Western Australia. The program is designed for international students who do not have a strong English language background and whose matriculation level is not sufficient for entry into Western Australian universities. The program commenced in 1993 and runs from February or April to November.

Fast Track WAUFP is designed for above average international students who have met academic background requirements of university entrance. It aims to give the students an opportunity to experience teaching and learning in the English language medium and to provide them with the opportunity to remedy any deficiencies in their academic background. The program commenced in 1999 and ran from August to mid-December at Tuart College. In 2006 the length of the Fast Track program was extended and now runs from June to December.

The WAUFP Mid-Year Entry program commenced in 2013 and runs from August to June. The statistics in this report relate to the current (2015-16) cohort, so statistics regarding the final examinations are not included.

## **PROVIDER COLLEGES AND STUDENT NUMBERS**

### **Provider Colleges in 2015 were:**

- Canning College (WAUFP and Mid-Year WAUFP)
- St George's Anglican Grammar School (WAUFP)
- Tuart College (Fast Track WAUFP)

### **Student enrolments by college**

#### **a) WAUFP**

The final number of students enrolled in 2015 was 140 as compared to 145 in 2014. This was a slight decrease of 3.4%. Student numbers have declined by 60% since 2010.

Final College enrolments were as follows for 2015 (2014):

Canning College	120 (108) students
St George's Anglican Grammar School	20 (37) students
Total	140 (145) students

#### **b) Fast Track WAUFP**

Eleven students enrolled at Tuart College in 2015 as compared to 9 in 2014 and 16 in 2013.

#### **c) Mid-Year WAUFP**

Sixteen students are currently enrolled in the 2015/2016 program at Canning College. The final number of students completing examinations in June 2016 was 13 as compared with 17 in 2015 and 20 in 2014.

## **STUDENT SUBJECT ENROLMENTS**

Fourteen subjects were offered in WAUFP and 8 subjects were offered in Fast Track. The Mid-Year Entry program only offered 7 subjects this year, as English was no longer offered due to local students no longer being included in the program. The numbers of students who sat each subject examination are shown in the table on the following page.

SUBJECTS	STANDARD	FAST TRACK	MID-YEAR 15/16
Accounting & Finance 3AB	37 (37)	7 (7)	6 (8)
Business Management and Enterprise 3AB	21 (39)		
Chemistry 3AB	70 (103)	4 (2)	6 (10)
Computer Science 3AB	35 (28)		11 (15)
ELACS	137* (145)	11 (9)	13 (16)
Earth and Environmental Science 3AB	9 (7)		
Economics 3AB	23 (35)	7 (7)	
Human Biological Science 3AB	45 (45)		
Mathematics 2CD	6 (19)	5 (6)	
Mathematics 3AB	59 (58)		7 (10)
Mathematics 3CD	70 (61)	6 (3)	6 (7)
Mathematics Specialist 3CD	32 (24)	4 (2)	
Physics 3AB	47 (48)	4 (2)	7 (4)
Psychology 3AB	19 (32)		

\*One repeater (not repeating ELACS) and two absentees from total of 140 candidates.

## NATIONALITY GROUP

### a) WAUFP

Over the past ten years over three quarters of all WAUFP students have come from Malaysia, China, Hong Kong, Vietnam and Singapore. The table below shows the changes over these years.

Country	Percentage of students from different countries									
	2006	2007	2008	2009	2010	2011	2012	2013	2014	2015
Malaysia	24%	35%	35%	36%	30%	33%	34%	38%	47%	43%
China	28%	20%	27%	30%	31%	29%	29%	33%	17%	21%
Hong Kong	12%	10%	10%	6%	8%	20%	10%	2%	4%	1%
Singapore	13%	11%	6%	5%	8%	9%	11%	10%	12%	17%
Vietnam	1%	2%	3%	5%	5%	3%	4%	4%	5%	4%
Total	77%	76%	78%	77%	77%	81%	84%	83%	85%	86%

### b) Fast Track WAUFP

All 11 students came from Indonesia.

### c) Mid-Year WAUFP

Students came from Brazil (1), China (6), Malaysia (3), Sierra Leone (1), Vietnam (1) and Zambia (3).



## **SETTERS, CHECKERS AND MARKERS**

### **a) WAUFP**

Fourteen subject examination papers were written in 2015, the same number as the previous year. All subjects, except ELACS, adopted the School Curriculum and Standards Authority Courses of Study syllabi. All subject examinations were at stage 3 except for Mathematics 2CD. There were two new setters, one who set the Computer Science 3AB paper and one who set the Human Biological Science 3AB paper. To ensure impartiality, TISC continued its policy of appointing examination setters from outside the Provider Colleges.

Most subject checkers came from within the Provider Colleges and this proved to be very important in ensuring the use of appropriate language for international students and maintain the overall quality of the examination papers. Only 4 Checkers had not taught at one of the Provider Colleges.

All papers were marked independently by 2 markers. The marking processes ran smoothly for most subjects.

### **b) Fast Track WAUFP**

Tuart College staff set and marked the final examination papers and external checkers were appointed by TISC. The marking and supervision of the examinations went smoothly.

### **c) Mid-Year WAUFP**

Seven subject examination papers were written in 2015/2016. All subjects, except ELACS, adopted the School Curriculum and Standards Authority Courses of Study syllabi. All subject examinations were at stage 3. All Setters had set WAUFP papers previously.

Most subject checkers came from within the Provider Colleges (including retired teachers).

## **SPECIAL TERTIARY ADMISSIONS TEST (STAT)**

The STAT Multiple Choice Section was held during the examination weeks. All tests ran smoothly and the results were used to scale students' final subject examinations.

Each student was sent a STAT Result Letter which was posted to them with their WAUFP Notification of Results.

## **FINAL EXAMINATIONS**

### **a) WAUFP**

An examination timetable was prepared by TISC and distributed to the colleges at the beginning of August. The final examinations were held over 2 weeks and coincided with the WACE examinations.

TISC organised the supervision of the examinations. The Chief Supervisors appointed to each college attended a training meeting at TISC the week before the commencement of the examinations. At this meeting all examination procedures were reviewed. All supervisors were sent a Supervisor's Manual outlining how to run the examinations and all signed a Supervisor's Agreement that outlined their duties. TISC ensured that all supervisors held a current Working with Children Check card.

The examinations ran smoothly and all supervisors performed well. There were no complaints concerning the supervisors and there were no reports of students' cheating.

### **b) Fast Track WAUFP**

An examination timetable was prepared by TISC in mid-November. Tuart College printed the examination papers and all examinations were held at the college. TISC organised the supervision of the examinations and all supervisors were sent a Supervisor's Manual outlining how to run the examinations. All supervisors signed a Supervisor's Agreement that outlined their duties and all supervisors held a current Working with Children Check card. All examinations ran smoothly.

### **c) Mid-Year WAUFP**

An examination timetable was prepared by TISC in mid-March. All examinations were held at Canning College. TISC organised the supervision of the examinations and all supervisors were sent a Supervisor's Manual outlining how to run the examinations. All supervisors signed a Supervisor's Agreement that outlined their duties and all supervisors held a current Working with Children Check card. All examinations ran smoothly.

## **EVALUATION OF THE EXAMINATION PAPERS**

An evaluation sheet was sent to all colleges to gain feedback from teachers but very few teachers responded. Those who did respond had specific feedback that was forwarded on to the Setters concerned. The concerns regarding the Earth and Environmental Science examination were taken into account in the scaling of the subject results.

## **SUBJECT MODERATION**

### **a) WAUFP**

Moderation of each college's assessments was carried out by standardising them to the same mean and standard deviation as the exam results of each college.

## **SCALING**

### **a) WAUFP**

The Scaling Meeting was held on 3 December. Members of the Scaling Committee were emailed the agenda and a summary of the WAUFP Scaling Process before the meeting.

### **b) Fast Track WAUFP**

The WAUFP Moderation/Scaling Committee delegated the scaling of Fast Track to the Executive Officer of TISC. On 7 December the Fast Track students' results were scaled by TISC. Given the very small numbers the scaling was a manual process.

Tuart College supplied internal assessment marks for all students. This additional information helped in the scaling process. The students' final marks were derived using 25% School Assessment and 75% Raw Examination Marks. The students' STAT results and comments on their ability from their teachers were also used in the process.

## **NOTIFICATION OF RESULTS**

On 9 December all WAUFP and Fast Track results were made available on the TISC website and Results Letters were despatched. TISC uploaded results for the International Centre of each university and also for the Provider Colleges.

Mid-Year WAUFP results were released online and despatched to students on 16 June 2016.

## RELATIONSHIP BETWEEN ELACS RESULTS AND THE CPS

### a) WAUFP

	Number of students		
	with a CPS < 50	with a CPS ≥50	Total
Number of students with an ELACS score < 50	14	6	20
Number of students with an ELACS score ≥50	15	102 (74%)	117
Total	29	108	137

### b) Changes over the last 10 years

The variations in the percentage of students with a CPS and ELACS score ≥50 (minimum requirement for university admission) reflects the differences in the abilities of the student cohort from year to year.

Year	% of students with a CPS and ELACS score ≥ 50
2005	71
2006	73
2007	70
2008	69
2009	62
2010	68
2011	67
2012	72
2013	70
2014	72
2015	74

### c) Fast Track

	Number of students		
	with a CPS < 50	with a CPS ≥50	Total
Number of students with an ELACS score < 50	1	1	2
Number of students with an ELACS score ≥50	0	9 (82%)	9
Total	1	10	11

### d) Mid-Year WAUFP

	Number of students		
	with a CPS < 50	with a CPS ≥50	Total
Number of students with an ELACS score < 50	1	1	2
Number of students with an ELACS score ≥50	2	9 (69%)	11
Total	3	10	13

## **CERTIFICATES OF ACHIEVEMENT AND LETTERS OF CONGRATULATIONS**

Certificates of Achievement were awarded to 74% of WAUFP students and 82% of Fast Track students and 69% of Mid-Year Students.

Students received a certificate if they:

- Scored 50 or higher in the subject ELACS and therefore achieved English language competency, and
- Obtained a Combined Percentage Score (CPS) of at least 50.

Letters of congratulations were sent to students who had a CPS in the top 5%, and the top student in each subject with an enrolment of 10 or more students.

## **FUTURE CHANGES**

- a) The syllabuses used for WAUFP subjects in 2016 and beyond will be the new WACE ATAR course syllabuses for all subjects except ELACS. This will apply to the 2016 WAUFP and Fast Track cohorts, and the 2016-17 Mid-Year cohort.
- b) TISC is offering the WAUFP on a trial basis in 2016 at Nanjing's Experimental School in China. The Western Australian Education Group is responsible for the administration and delivery of the program at the school, liaising closely with TISC to ensure maintenance of WAUFP's high academic standards and comparability with the administration of the program in Western Australia.

## SCHOOL VISITS

TISC staff were invited to visit 61 metropolitan and country schools to present information to major interest groups:

- Year 12 staff
- Year 12 students (and parents)
- School staff development days

The information presented centred on the Australian Tertiary Admission Rank (ATAR), requirements for university entry, preference and offer systems as well as the services provided on the web. Additional presentations were made to schools on the Marks Adjustment Process and the impact on Stage 2 and Stage 3 courses.

Presentations varied from 20-45 minutes.

### 2015

<b>Metropolitan Schools</b>	
July	Helena College, John Septimus Roe Anglican Community School, Kennedy Baptist College, Frederick Irwin Anglican School, John Wollaston Anglican Community School
August	John XXIII, Trinity College, Living Waters Lutheran College, Christ Church Grammar, Shenton College, Penrhos College, Mindarie Senior College, St Brigid's College, Central TAFE, Warnbro Community High School, Leeming SHS, St Mary's Anglican Girls School, Mt Lawley SHS, Seton Catholic College, Kiara College, Cecil Andrews SHS, Girrawheen SHS, Mazenod College, CBC, Rossmoyne SHS, Santa Maria College
September	Churchlands SHS, John Curtin College of the Arts, St Hilda's Anglican School for Girls, Atwell College, Presbyterian Ladies College, Canning Vale College

<b>Country Schools</b>	
July	Great Southern Grammar, Mt Barker Community College, North Albany SHS, Denmark SHS
August	Australind SHS, Newton Moore SHS, Cornerstone Christian College, Dalyellup College, Georgiana Molloy AS, Bunbury SHS, Bunbury Cathedral Grammar School, MacKillop CC, Collie SHS, Manea Senior College, Bunbury Catholic College, Busselton SHS, Eastern Goldfields College, John Paul College

### 2016

<b>Metropolitan Schools</b>	
February	Governor Stirling SHS, Notre Dame University, Shenton College
March/April	Aranmore Catholic College, Swan Valley ACS, Belridge Secondary College
May/June	Wesley College/Penrhos College, Atwell College, Warnbro CHS, Irene McCormack CC, Kiara College

# SCHEDULE OF DATES

---

## *Major Dates for Undergraduate Admissions*

<b>Date</b>	<b>Principal event</b>
<i>August 2015</i>	<i>2016 TISC Guide</i> despatched to all secondary schools with Year 12 students.
<i>10 August 2015</i>	Applications for undergraduate admission open.
<i>30 September 2015</i>	Closing date for receipt of undergraduate admission application forms and applications via the web without incurring a late fee.
<i>30 September 2015</i>	A late application fee of \$130 applied.
<i>30 December 2015</i>	Western Australian 2015 Year 12 students' results available on the TISC website.
<i>30 December 2015</i>	Universities Admission Advice Letter posted to WA Year 12 students who had requested and paid for copies.
<i>6 January 2016</i>	Closing date for change of preference for main round of offers.
<i>20 January 2016</i>	University offers available on the TISC website. Despatch of main round of offers to undergraduate courses.
<i>25 January 2016</i>	Closing date for late applications.
<i>25 January 2016</i>	Closing date for change of preferences for inclusion in second round of offers.
<i>3 February 2016</i>	Second round offers available on the TISC website. Despatch of second round offers. TISC notified all unsuccessful applicants at this time.
<i>May 2016</i>	2017 Course Prospectuses from each of the participating universities despatched to all secondary schools for distribution to Year 12 students.

# TISC PUBLICATIONS

---

The following TISC publications were distributed/published between July 2015 and June 2016:

- 2016 TISC Guide
- 2015 and 2016 STAT Booking Form
- Western Australian Universities' Foundation Program 2016 Administrative Procedures Manual

## **Pamphlets/Flyers/Posters**

- Guide to the Universities Admission Advice Letter
- Release of Scaled Scores and ATARs (Information sheet)

## **Online Publications**

- Admission Requirements for School Leavers 2019
- Admission Requirements for Mature Age Students 2017
- International Baccalaureate brochure 2017
- Statistics (2015/2016)
  - Application and Offer Statistics – 2015/2016
- Cut-Off Ranks 2016
- Indicative ATARs 2016
- ATAR Statistics (2015)
  - ATAR Frequency Distribution Table
  - ATAR Gender Breakdown
  - Histogram of School Leavers achieving particular ATARs using Stage 2 and Stage 3
  - Use of Stage 2 and Stage 3 in ATAR
  - WACE Courses used in ATAR
- Scaling Statistics (2015)
  - Histograms and Scaled Scores Statistics for WACE courses
  - Means and Populations (Preliminary and Final Scaling and Total)
  - Scaling Information Sheet 2015
  - Summary Scaling Statistics – Percentages Greater than Specified Score
  - Summary Scaling Statistics – Scaled Scores for Specified Percentiles
- TISC School Circulars 2015 – 2016
- TISC Powerpoint Presentation for WA Year 12 students
- Annual Report 2014/2015

## SCHEDULE OF FEES AND CHARGES

Service	Fee*
Application processing fee for WA Year 12 school leaver applicants up to September closing date	\$27.00
Application processing fee for non-school leaver applicants up to September closing date	\$57.00
Application processing fee (after September closing date)—all applicants	\$138.00
Despatch of TISC Guide to: Within Australia	\$20.00
Overseas	\$30.00
Duplicate Documents (UAAL, STAT or WAUFP results)	\$37.00
Initial hard copy of current UAAL	\$14.00
additional copies (in the same transaction)	\$ 6.00
Certification of documents for interstate Admissions Centres	\$6 (plus \$1 per page)
Checking ATAR calculation	\$35.00
Annual Report	No cost, available on web
<b>STAT:</b> One test only on one day (includes sample question booklet)	\$143.00
Both tests on one day (includes sample question booklet)	\$187.00
Special supervision fee (not applicable to special needs candidates)	\$66.00
Change of session fee	\$53.00
Cancellation fee (prior to one full working day before test)	\$53.00
Sample Question Booklet 2 (red cover) - ACER	no longer printed
Despatch on behalf of ACER	\$15.00
FOI request	Fees (GST exempt) set by the FOI Commissioner
<b>WAUFP</b> <b>Standard Intake 1, 2 (February/April to November)</b> support up to 13 Subjects <b>Registration Fee</b> Additional Subject (written only) Additional Subject (with a practical)	\$1,150/student or \$28,000 per college \$4,500 \$5,600
<b>Mid-Year (August to June)</b> support up to 7 Subjects – One College only <b>Registration Fee</b> Additional Subject (written only) Additional Subject (with a practical)	\$1,025/student or \$40,000 per college \$4,000 \$5,000
<b>Fast-Track (June to December)</b> Support up to 5 Subjects – One College only <b>Registration fee (Fast-Track)</b> Additional Subject (written only)	\$700/student or \$10,500 per college \$1,450
<b>WAUFP Private Candidate fee</b>	\$70
<b>WAUFP:</b> Withdrawal of student after registration – Refund of: \$850 for WAUFP Standard (Intake 1 & 2) \$800 for WAUFP Mid-Year \$450 for WAUFP Fast-Track No refund given after set date for program.	

\* GST inclusive



# APPENDICES

---

	<b>Page</b>
<b>APPENDIX A CUSTOMER SERVICE STATISTICS</b>	
Table 1 – Customer Service Statistics for Counter Enquiries	45
Table 2 – Customer Service Statistics for Phone Enquiries	46
Table 3 – Customer Service Statistics for Email Enquiries	47
 <b>APPENDIX B WESTERN AUSTRALIAN UNIVERSITIES' FOUNDATION PROGRAM STATISTICS</b>	
Table 1 – 2015 WAUFP Subject Statistics	49
Table 2 – 2015 WAUFP Moderation Statistics	50

**Note:** Detailed statistics on applications, offer and enrolments by course within a university for Undergraduate courses are on [www.tisc.edu.au](http://www.tisc.edu.au)

		<b>Page</b>
Table 1	Customer Service Statistics for Counter Enquiries	45
Table 2	Customer Service Statistics for Phone Enquiries	46
Table 3	Customer Service Statistics for Email Enquiries	47

Table 1: Customer Service Statistics for **Counter Enquiries**

MONTH	STAT	DUPLICATE DOCUMENTS	ADMISSION REQUIREMENTS	UNI APPLICATION PAYMENTS	UNI APPLICATION ENQUIRIES	UNI APPLICATION DOCUMENTS	CERTIFICATION OF DOCUMENTS	CHANGE OF PREFERENCE	UAAL	OFFERS	WAUFP	TERMINAL USE (Counter)	DELIVERIES	VISITORS	MISC	TOTAL CUSTOMERS**
<b>Jul-15</b>	15	24	0	0	3	0	0	0	0	0	0	2	64	30	0	134
<b>Aug-15</b>	17	10	1	16	7	94	1	0	0	0	0	6	52	10	0	203
<b>Sep-15</b>	40	22	2	43	6	173	0	1	1	0	0	23	70	14	2	344
<b>Oct-15</b>	42	16	1	18	7	195	0	1	1	1	0	17	64	27	4	361
<b>Nov-15</b>	118	8	0	25	15	286	1	1	1	0	0	28	88	26	3	549
<b>Dec-15</b>	165	17	1	9	11	240	3	2	3	0	0	23	70	15	0	556
<b>Jan-16</b>	276	30	2	14	15	229	0	6	2	4	0	42	64	16	2	676
<b>Feb-16</b>	0	42	1	0	4	6	4	0	1	2	0	1	54	28	1	148
<b>Total</b>	<b>673</b>	<b>169</b>	<b>8</b>	<b>125</b>	<b>68</b>	<b>1223</b>	<b>9</b>	<b>11</b>	<b>9</b>	<b>7</b>	<b>0</b>	<b>142</b>	<b>526</b>	<b>166</b>	<b>12</b>	<b>2971</b>
Total 2014/2015	592	170	24	156	87	1173	9	2	4	2	1	117	519	117	10	2764

\*\* Includes customers with multiple requests for information

Table 2: Customer Service Statistics for **Telephone Enquiries**

MONTH	STAT	CHANGE OF PASSWORD	UNI APPLICATION PAYMENTS	UNI APPLICATION (WA) ENQUIRY	ADMISSION REQUIREMENTS	TISC GUIDE ENQUIRY	DUPLICATE DOCUMENTS	WRONG NUMBER	PAST RESULTS BY PHONE	CHANGE OF ADDRESS	CHANGE OF PREFERENCE	UAAL	DEFERRAL ENQUIRIES	OFFERS	WAUFP	EXTENSION TRANSFERS	TAFE	REGISTRATION/LOGIN	SCSA	GENERAL INFORMATION INC HECS	TOTAL CALL CODES*	TOTAL CALLS**
<b>July.15</b>	115	0	0	64	31	6	60	5	51	0	0	2	0	2	1	19	2	4	6	68	436	348
<b>Aug.15</b>	167	16	18	408	84	35	34	16	35	2	10	2	0	6	1	26	1	59	7	42	969	929
<b>Sept. 15</b>	218	60	59	735	105	6	58	25	30	4	32	20	5	25	3	39	2	106	8	100	1640	1524
<b>Oct. 15</b>	241	9	64	349	80	0	49	28	37	1	9	6	2	13	2	36	1	32	12	83	1054	994
<b>Nov. 15</b>	323	7	21	480	96	0	48	22	37	2	25	8	2	33	2	38	1	64	10	117	1336	1180
<b>Dec. 15</b>	345	29	21	475	91	1	45	19	43	1	33	50	5	59	5	51	0	65	32	109	1479	1384
<b>Jan. 16</b>	509	18	40	828	88	4	77	37	53	4	131	56	7	407	2	35	1	69	22	122	2510	2424
<b>Feb. 16</b>	78	7	0	103	39	1	64	11	45	0	6	14	0	80	0	22	2	1	11	85	569	521
<b>Total</b>	<b>1996</b>	<b>146</b>	<b>223</b>	<b>3442</b>	<b>614</b>	<b>53</b>	<b>435</b>	<b>163</b>	<b>331</b>	<b>14</b>	<b>246</b>	<b>158</b>	<b>21</b>	<b>625</b>	<b>16</b>	<b>266</b>	<b>10</b>	<b>400</b>	<b>108</b>	<b>726</b>	<b>9993</b>	<b>9304</b>
Total 2014/2015	1948	216	159	3726	490	16	396	138	219	12	99	71	31	315	15	261	22	287	80	272	8773	8494

\* This figure is more than the total calls received as one call can have multiple call codes entered

\*\*Calls for particular extensions are not listed

Table 3: Customer Service Statistics for **Email Enquiries**

MONTH	ATAR	BROWSER ISSUES	COP - COURSE INFO	CURRENT UNDERGRAD APPS	DEFERMENT	DUPLICATE DOCS	GENERAL INFORMATION	OFFERS	PASSWORD RESET/USER ID	SCALING	SCHOOL/ORGANISATION QUERY	STAT	WAUFP	TOTAL EMAILS
<b>Jul-15</b>	4	0	1	1	0	28	25	2	15	1	12	18	0	107
<b>Aug-15</b>	11	30	13	82	1	28	68	2	299	1	24	17	0	576
<b>Sep-15</b>	5	43	32	187	6	43	74	12	565	1	15	45	0	1028
<b>Oct-15</b>	6	3	6	115	1	24	45	8	87	1	13	33	0	342
<b>Nov-15</b>	9	6	4	96	0	27	40	5	81	2	12	29	1	312
<b>Dec-15</b>	36	5	17	109	0	26	39	19	619	22	16	41	8	957
<b>Jan-16</b>	33	4	70	111	3	31	65	116	200	6	7	67	14	727
<b>Feb-16</b>	10	0	10	18	3	29	35	26	47	2	21	7	5	213
<b>Total</b>	<b>114</b>	<b>91</b>	<b>153</b>	<b>719</b>	<b>14</b>	<b>236</b>	<b>391</b>	<b>190</b>	<b>1913</b>	<b>36</b>	<b>120</b>	<b>257</b>	<b>28</b>	<b>4262</b>
Total 2014/2015	115	66	180	659	20	230	384	209	1810	38	143	280	29	4163

# WESTERN AUSTRALIAN UNIVERSITIES' FOUNDATION PROGRAM STATISTICS

---

## APPENDIX B

		<b>Page</b>
Table 1	Western Australian University Foundation Program Subject Statistics 2015	49
Table 2	Western Australian University Foundation Program Moderation Statistics 2015	50

### 2015 WAUFP Subjects Statistics

Subject	Scaling population	Scores	max	min	mean	stddev	% > 50
<b>Accounting and Finance</b>	37	combined	75.79	11.04	42.59	18.56	35.14
		scaled	83.43	17.28	58.01	17.41	67.57
<b>Business Management and Enterprise</b>	21	combined	75.56	17.07	45.71	17.48	33.33
		scaled	77.31	26.71	55.13	14.39	61.90
<b>Chemistry</b>	70	combined	94.54	9.28	54.59	21.59	54.29
		scaled	95.45	13.36	66.18	19.86	80.00
<b>Computer Science</b>	35	combined	92.95	7.90	50.61	19.97	54.29
		scaled	93.45	7.69	53.78	21.12	60.00
<b>Earth and Environmental Science</b>	9	combined	63.84	36.96	47.52	8.93	44.44
		scaled	74.59	35.96	52.88	13.14	55.56
<b>Economics</b>	23	combined	73.21	24.57	50.22	16.31	56.52
		scaled	86.11	34.01	60.40	16.45	69.57
<b>ELACS</b>	137	combined	85.61	21.04	55.26	13.51	63.50
		scaled	93.46	21.64	66.55	16.00	85.40
<b>Human Biological Science</b>	45	combined	82.26	13.77	51.96	20.09	53.33
		scaled	91.13	24.78	68.04	18.30	82.22
<b>Mathematics</b>	134	combined	115.28	33.48	79.83	20.10	90.30
		scaled	95.28	26.21	65.40	16.55	80.60
<b>Mathematics 2CD</b>	6	scaled	54.83	26.98	38.36	10.34	16.67
<b>Mathematics 3AB</b>	58	scaled	81.18	26.21	56.11	13.01	70.69
<b>Mathematics 3CD</b>	70	scaled	95.28	33.57	75.42	11.84	94.29
<b>Mathematics: Specialist</b>	30	combined	87.63	9.43	52.56	22.50	60.00
		scaled	90.48	22.62	68.96	18.06	83.33
<b>Physics</b>	47	combined	91.81	6.99	49.40	23.09	51.06
		scaled	95.41	12.58	65.07	21.73	74.47
<b>Psychology</b>	19	combined	74.14	23.00	50.40	16.44	63.16
		scaled	82.88	36.00	62.08	14.22	73.68

Stage 3 unless otherwise indicated.

### 2015 Moderation Statistics

Subject	Scaling population		Assessment	Exam	Moderated Assessment
<b>Accounting and Finance 3AB</b>	37	mean	50.84	42.59	42.59
		stdev	17.76	18.92	18.92
<b>Business Management and Enterprise 3AB</b>	21	mean	50.86	45.71	45.71
		stdev	16.37	18.06	18.06
<b>Chemistry 3AB</b>	70	mean	57.20	54.59	54.59
		stdev	17.57	22.04	22.03
<b>Computer Science 3AB</b>	35	mean	56.17	50.60	50.62
		stdev	16.81	20.49	20.43
<b>Earth and Environmental Science 3AB</b>	9	mean	54.22	47.52	47.52
		stdev	10.62	9.21	9.21
<b>Economics 3AB</b>	23	mean	63.61	50.22	50.22
		stdev	16.10	16.70	16.70
<b>ELACS</b>	137	mean	54.42	55.26	55.26
		stdev	13.33	14.03	14.03
<b>Human Biological Science 3AB</b>	45	mean	59.91	51.96	51.96
		stdev	16.53	20.23	20.23
<b>Mathematics 2CD</b>	6	mean	52.83	59.38	59.38
		stdev	11.54	13.00	13.00
<b>Mathematics 3AB</b>	58	mean	52.72	48.75	48.75
		stdev	19.45	19.64	19.64
<b>Mathematics 3CD</b>	70	mean	63.39	66.19	66.19
		stdev	18.08	20.39	20.39
<b>Mathematics: Specialist 3CD</b>	30	mean	58.63	52.57	52.56
		stdev	19.20	22.91	22.91
<b>Physics 3AB</b>	47	mean	54.55	49.40	49.40
		stdev	18.51	23.42	23.42
<b>Psychology 3AB</b>	19	mean	60.26	50.39	50.40
		stdev	10.30	17.09	17.09